

**Deepwater Program: Exploration and Research of Northern Gulf of Mexico
Deepwater Natural and Artificial Hard Bottom Habitats with Emphasis on Coral
Communities: Reefs, Rigs and Wrecks**

Project Director - James Brooks

TDI-Brooks International, 1902 Pinon, College Station, TX 77845

Phone: (979) 693-3446 FAX: (979) 693-6389 E-mail: Drjmbrooks@aol.com

CO-PI Chuck Fisher

208 Mueller Laboratory, The Pennsylvania State University, University Park, PA 16802

Phone: (814) 865-3365 FAX: (814) 865-9131 E-mail: cfisher@psu.edu

CO-PI Harry Roberts

CSI-LSU, 304 Howe-Russell Geosciences Complex, Baton Rouge, LA 70803

Phone: 225.578-2964 FAX: 225-578-2520 E-mail: hrober3@lsu.edu

CO-PI Dan Warren

C&C Technologies, Inc, 730 E. Kaliste Saloom Rd., Lafayette, LA 70508

Phone: 337-261-0660 E-mail: robert.church@cctechnol.com

CO-PI Ian MacDonald

Florida State University, 117 N. Woodward Ave., Tallahassee, FL 32306

Phone: 361.825-2234 FAX: (361) 825-2742 E-mail: imacdonald@falcon.tamucc.edu

CO-PI Erik Cordes

313 Biology-Life Sciences, 1900 N. 12th Street, Temple University, Philadelphia, PA 19122

Phone: 215-204-8854 FAX: 215-204-6646 E-mail: erik.cordes@temple.edu

CO-PI Chris German

Woods Hole Oceanographic Institution, Clark South 276, MS#24, Woods Hole, MA 02543

Phone: 508 289 2853 FAX: E-mail: cgerman@whoi.edu

CO-PI Liz Goehring

The Pennsylvania State University, 208 Mueller Laboratory, University Park PA 16802-5301

Phone: (814) 863-0278 FAX: (814) 865-9131 E-mail: exg15@psu.edu

CO-PI Bernie Bernard

TDI-Brooks International, 1902 Pinon, College Station, TX 77845

Phone: 979.690-6287 FAX: (979) 693-6389 E-mail: berniebernard@tdi-bi.com

CO-PI Gary Wolff

TDI-Brooks International, 1902 Pinon, College Station, TX 77845

Phone: 979.846-7679 FAX: (979) 693-6389 E-mail: garywolff@geodatapub.com

Award Number: M08PC20038

<http://www.tdi-bi.com/Lophelia/lophelia-main.htm>

Report Documentation Page

Form Approved
OMB No. 0704-0188

Public reporting burden for the collection of information is estimated to average 1 hour per response, including the time for reviewing instructions, searching existing data sources, gathering and maintaining the data needed, and completing and reviewing the collection of information. Send comments regarding this burden estimate or any other aspect of this collection of information, including suggestions for reducing this burden, to Washington Headquarters Services, Directorate for Information Operations and Reports, 1215 Jefferson Davis Highway, Suite 1204, Arlington VA 22202-4302. Respondents should be aware that notwithstanding any other provision of law, no person shall be subject to a penalty for failing to comply with a collection of information if it does not display a currently valid OMB control number.

1. REPORT DATE 2010		2. REPORT TYPE		3. DATES COVERED 00-00-2010 to 00-00-2010	
4. TITLE AND SUBTITLE Deepwater Program: Exploration and Research of Northern Gulf of Mexico Deepwater Natural and Artificial Hard Bottom Habitats with Emphasis on Coral Communities: Reefs, Rigs and Wrecks				5a. CONTRACT NUMBER	
				5b. GRANT NUMBER	
				5c. PROGRAM ELEMENT NUMBER	
6. AUTHOR(S)				5d. PROJECT NUMBER	
				5e. TASK NUMBER	
				5f. WORK UNIT NUMBER	
7. PERFORMING ORGANIZATION NAME(S) AND ADDRESS(ES) TDI-Brooks International, 1902 Pinon, College Station, TX, 77845				8. PERFORMING ORGANIZATION REPORT NUMBER	
9. SPONSORING/MONITORING AGENCY NAME(S) AND ADDRESS(ES)				10. SPONSOR/MONITOR'S ACRONYM(S)	
				11. SPONSOR/MONITOR'S REPORT NUMBER(S)	
12. DISTRIBUTION/AVAILABILITY STATEMENT Approved for public release; distribution unlimited					
13. SUPPLEMENTARY NOTES					
14. ABSTRACT					
15. SUBJECT TERMS					
16. SECURITY CLASSIFICATION OF:			17. LIMITATION OF ABSTRACT Same as Report (SAR)	18. NUMBER OF PAGES 14	19a. NAME OF RESPONSIBLE PERSON
a. REPORT unclassified	b. ABSTRACT unclassified	c. THIS PAGE unclassified			

LONG-TERM GOALS

A primary goal of this study is to obtain a robust predictive capability for the occurrence of rich cnidarian (primarily scleractinian coral) hard ground communities in the deep Gulf of Mexico. To achieve this long-term goal, this study will accomplish three interrelated and interdependent objectives

OBJECTIVES

The objectives of this study are:

- 1) Discover and describe new locations at greater than 300m depth in the GoM with extensive coral community development, particularly including *Lophelia pertusa*.
- 2) Gain a more comprehensive understanding of the fundamental processes that control the occurrence and distribution of *Lophelia* and other extensive coral communities at depths greater than 300 m in the GoM through both laboratory experiments and field data collection.
- 3) Document and understand the relations between coral communities on artificial and natural substrates with respect to community composition and function, phylogeographic and population genetics, and growth rates of the key cnidarian foundation fauna.

Our specific biological objectives:

- 1) To discover and characterize new sites:
 - a. Characterize key sites at the largest scale with high resolution bathymetry, side scan sonar imaging, 3D seismic data, and current models
 - b. Characterize the coral density at all study sites at the 10 to 100 m scale with randomized photo transects and general site descriptions.
 - c. Characterize the community composition at the 1 to 10 m scale at significant coral sites (man-made and natural) with analysis of close up imagery, replicate 5x5m photomosaics, and quantitative community collections.
- 2) Analyze connectivity among all sites in the GoM (man-made and natural), and to other sampled populations, with comparative community, phylogeographic and population genetic analyses.
- 3) Compare the structure, species richness and diversity of communities tightly associated with *Lophelia* on man-made structures and from natural sites in the GoM
- 4) Experimentally determine the tolerance and growth response of *Lophelia* to temperature, pH/alkalinity, dissolved oxygen and electrical current.
- 5) Characterize and constrain growth rates of key species of colonial cnidarians (pioneer colonies) using analyses of images of the largest colonies on man-made structures of known age.
- 6) Characterize key variables at sites with the most significant communities of coral colony development over one year by monitoring temperature, currents, larval seasonal distribution and sediment quality and quantity at 2-4 sites between 2009 and 2010.

By integrating this information, we will develop a predictive model to examine the potential occurrence of significant assemblages of *L. pertusa* or other cnidarians at unexplored sites and artificial reefs in the deep GoM.

OTHER OBJECTIVES

1. Historical shipwreck component. Study of up to six (6) shipwrecks to determine identity, site boundaries, National Register eligibility, preservation state and stability, associated biological communities and artificial reef effects.

- a. Determine rate of deterioration of test coupons at platforms or shipwrecks
2. Coordination with USCG
3. Deepwater commercial fisheries review that impact hard bottom communities

APPROACH AND WORK PLAN

Key individuals participating in this work and their roles are:

- Dr. James Brooks is the Project Manager and takes the lead in administration of this project,
- Dr. Charles Fisher (Pennsylvania State University) coordinates the biological studies,
- Dr. Erik Cordes (Temple University) takes responsibility for the live *Lophelia pertusa* experiments, gorgonian genetics, and coordinate the phylogeography and taxonomy team,
- Dr. Harry Roberts (Louisiana State University) coordinates the geological/geophysical and oceanographic studies,
- Mr. Dan Warren and Mr. Rob Church from C&C Technology coordinate the wrecks studies along with,
- Dr. Chris German (WHOI) who coordinates the time series sediment trap studies,
- Dr. Ian MacDonald (Florida State University) directs the deployment and analyses of the time lapse cameras and imagery
- Ms. Liz Goehring (Penn State and NSF Ridge 2000 office) coordinates the education and outreach activities.
- Dr. William Schroeder assists in the analysis of coral communities on rigs and wrecks and also participates in the over-all study synthesis phase.
- Dr. Tim Shank conducts studies on the population genetics of several coral associated taxa.
- Dr. Iliana Baums oversees development of molecular markers for studies of population connectivity in antipatharians and assists in the construction of *Lophelia* maintenance aquaria.
- Dr. Stephen Cairns is responsible for the identification of the hard coral samples collected.
- Peter Etnoyer oversees the classical taxonomy of octocorals
- Dr. Dennis Opresko the classical taxonomy and phylogeography of antipatharians.
- Dr. Bernie Bernard, TDI-Brooks Director and Chief Technology Officer, will coordinate the navigation and logistics portion of the project.
- Dr. Gary Wolff will act as the projects Data Manager as he has for other BOEM projects including the Chemo-series.

WORK COMPLETED

Four cruises have been completed since *Lophelia II* began. **Table 1** summarizes the dates, ships used and primary exploration equipment.

Cruise	Dates	Ship	Equipment
1	2 September - 2 October 2008	<i>Nancy Foster</i> - NOAA	ROV <i>SeaVision</i>
2	16 June - 1 July 2009	<i>RV Brooks McCall</i> – TDI-Brooks	AUV <i>Sentry</i>
3	19 August - 12 September 2009	<i>Ron Brown</i> - NOAA	ROV <i>JasonII</i>
4	13 October - 4 November, 2010	<i>Ron Brown</i> - NOAA	ROV <i>JasonII</i>

RESULTS

- increased accuracy of locating natural hard bottom areas associated with fluid-gas expulsion and deep-water coral communities to the deepest parts of the continental slope.
- deepest known occurrence of both *Leiopathes* and *Lophelia* in the Gulf of Mexico (GoM): 627m
- made the shallowest collection of a chemosynthetic tubeworm in the GoM - 320m
- collected information on 25 natural sites, six wrecks and four rigs
- of the 25 natural sites, 15 had never before been explored and 11 contained previously unknown coral communities
- extensive imaging including establishment of numerous long-term photographic monitoring stations
- discovered an area approximately 7 nm from MC252 that contained a small field of corals that were apparently impacted by the Deepwater Horizon Incident

IMPACT AND APPLICATIONS

National Security

This program will provide critical information on the exploration, characterization and function of hard-ground communities to BOEM. As manager of the nation's seafloor mineral resources, BOEM will use this information to aid in the development of critical energy resources, which may affect domestic energy production.

Economic Development

Increased energy and mineral production will have a positive economic impact at numerous levels in industry.

Quality of Life

Information on the location and functioning of hardground communities gathered by this program will have a positive impact on other ocean users, the natural environment, and the human environment. It will aid in minimizing the environmental impact on sensitive habitat and mitigate any potential damage to these communities.

Science Education and Communication

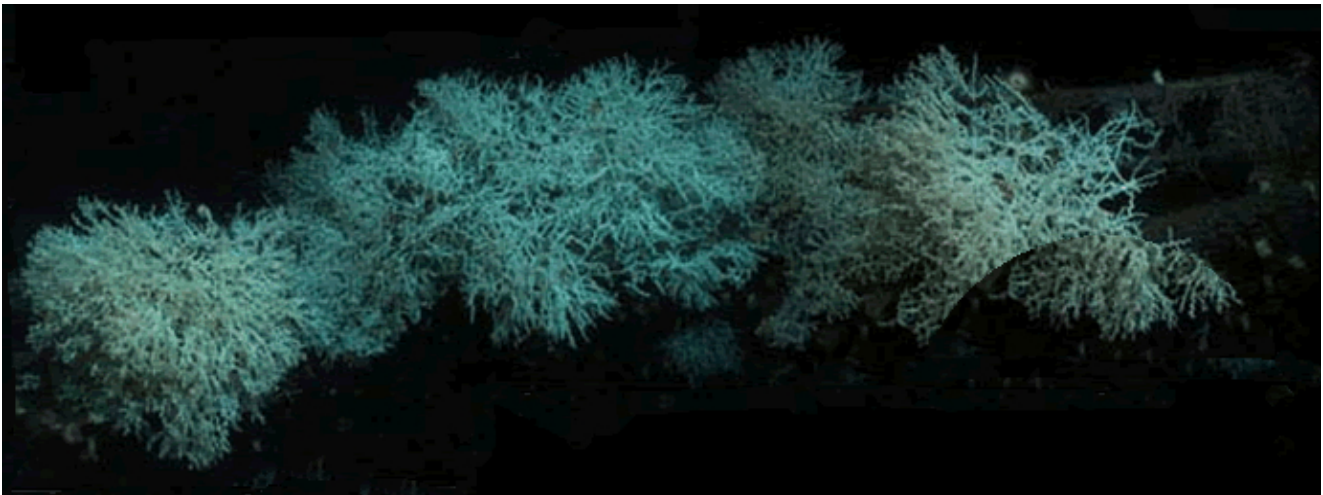
Education outreach efforts outside of the cruise website build on and leverage from the success of both the NOAA OE educational materials and the existing FLEXE (From Local to Extreme Environments) educational project. Our objective is to develop a full instructional unit on deep-sea coral ecology integrated with the NOAA/OE lessons, multimedia modules and Ocean Explorer website featured as the GLOBE FLEXE campaign for the 2010-2011 academic year.

TRANSITIONS

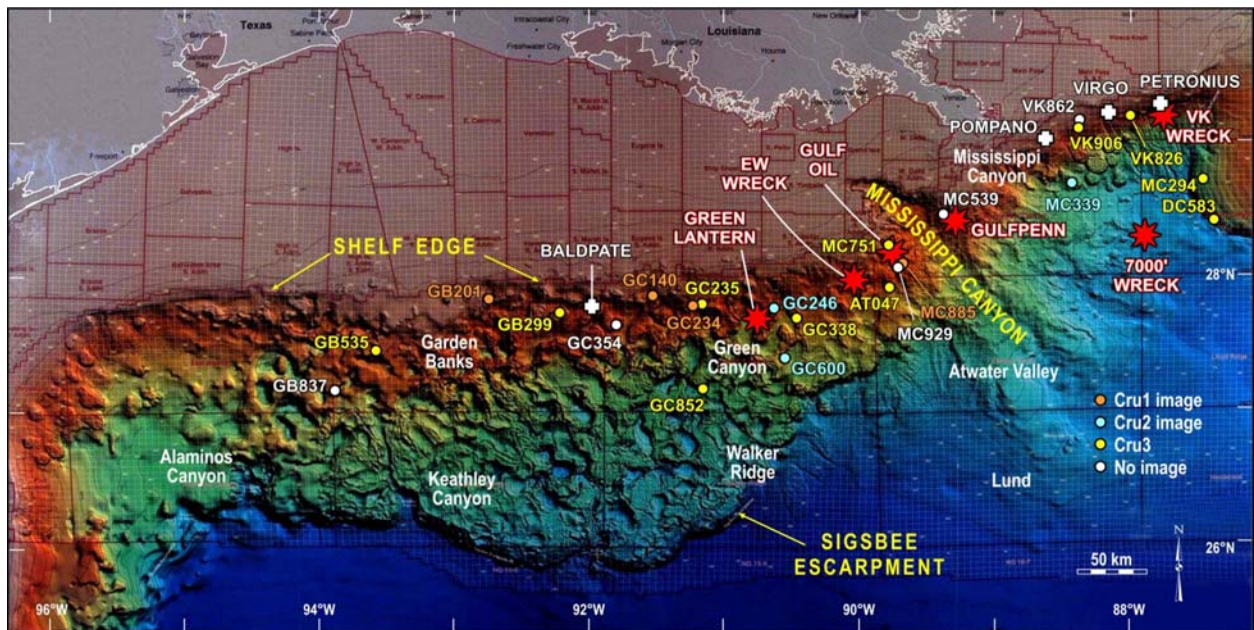
Data is provided to the ChEss database, which is a component of the Census of Marine Life (CoML) Ocean Biogeographic Information System (OBIS) data base. This work will contribute significantly to the goals of the Atlantic Equatorial Belt studies of the ChEss program, particularly the components that will allow interpretation of our findings in the context of hard-ground habitats around the world.

RELATED PROJECTS

- Chemosynthetic Ecosystems Study (MMS Report 95-0021)..
- Stability and Change in Gulf of Mexico Chemosynthetic Communities (MMS Report 2002-036).
- The Deepwater Program: Northern Gulf of Mexico Continental Slope Habitat and Benthic Ecology (MMS contract 1435-01-99-CT-30991).
- Investigations of Chemosynthetic Communities on the Lower Continental Slope of the Gulf of Mexico. (Award Number: 1435-01-05-39187) <http://tdi-bi.com/chemo3/chemo-main.htm>



Gulf Oil wreck - deepest site with abundant Lophelia currently known in the GoM



Sites and wrecks visited during the Lophelia II program in the Gulf of Mexico

REFERENCES RELATED TO THIS PROJECT

- Aloisi, G., I. Bouloubassi, S.K. Heijs, R.D. Pancost, C. Pierre, J.S.S. Damste, J.C. Gottschal, L.J. Forney and J.M. Rouchy, 2002, CH₄-consuming microorganisms and the formation of carbonate crusts at cold seeps: *Earth and Planetary Science Letters*, v. 203, p. 195-203.
- Andrews A.H., E.E. Cordes, M.M. Mahoney, K. Munk, K.H. Coale, G.M. Cailliet, J. Heifetz. 2002. Age, growth and radiometric age validation of a deep-sea, habitat-forming gorgonian (*Primnoa resedaeformis*) from the Gulf of Alaska. *Hydrobiologia* 471: 101-110.
- Barnette, M. C. 2001. A review of the fishing gear utilized within the Southeast Region and their potential impacts on essential fish habitat. NOAA Tech. Memo. NMFSSSEFSC- 449. 62 pp.
- Barnette, M. C. 2006. Observations of the Deep-Water Coral *Oculina varicosa* in the Gulf of Mexico
- Baums IB, Hughes CR, Hellberg MH (2005a) Mendelian microsatellite loci for the Caribbean coral *Acropora palmata*. *Marine Ecology - Progress Series* **288**, 115-127.
- Baums IB, Miller MW, Hellberg ME (2005b) Regionally isolated populations of an imperiled Caribbean coral, *Acropora palmata*. *Molecular Ecology* **14**, 1377-1390.
- Baums IB, Paris CB, Cherubin LM (2006) A bio-oceanographic filter to larval dispersal in a reef-building coral. *Limnology and Oceanography* **51**, 1969-1981.
- Bayer, FM (1956) Octocorallia. In: Moore, RC (ed) *Treatise on invertebrate paleontology*. Part F, Coelenterata. University of Kansas Press, Lawrence, Kansas, p 166-231
- Berman, Bruce D. 1971. *Encyclopedia of American Shipwrecks*. Boston: Mariners Press.
- Bergquist, D. C., I. A. Urcuyo, and C. R. Fisher. 2002. Establishment and persistence of seep vestimentiferan aggregations from the upper Louisiana slope of the Gulf of Mexico. *Mar. Ecol. Prog. Ser.* 241: 89-98.
- Bett BJ (1997) Atlantic Margin Environmental Survey: Seabed Survey of the Shelf Edge and Slope west of Shetland. Published by Challenger Division for Seafloor Processes: Southampton Oceanography Centre, NERC/ University of Southampton., pp. 165.
- Bett B.J. (2001). UK Atlantic margin environmental survey: introduction and overview of bathyal benthic ecology. *Cont. Shelf Res.* 21: 917-956.
- Browning, Robert M., Jr. 1996. U.S. Merchant Vessel War Casualties of World War II. Naval Institute Press. Annapolis.
- Burch, H. A. 1942a. Summary of Statements by Survivors of the SS *Gulf Penn*, U.S. Tanker. Navy department, Office of the Chief of Naval Operations. May 22. NOAA Technical Memorandum NMFS-SEFSC-535. 12 pp.
- Cairns, SD (1977) Guide to the commoner shallow water gorgonians (sea whips and sea fans) of Florida, the Gulf of Mexico, and the Caribbean. Sea Grant Field Guide Ser. No. 6

- Cairns S.D. (1978). A checklist of the ahermatypic scleractinia of the Gulf of Mexico, with the description of a new species. *Gulf Res. Rep.* 6: 9-15.
- Cairns S.D. (2001). A brief history of taxonomic research on azooxanthellate Scleractinia (Cnidaria: Anthozoa). *Bull. Biol. Soc. Wash.* 10: 191-203.
- Cairns S.D., D.M. Opresko, T.S. Hopkins & W.W. Schroeder. (1993). New records of deep-water Cnidaria (Scleractinia & Antipatharia) from the Gulf of Mexico. *Northeast Gulf Sci.* 13:1-11.
- Childress, J.J. and T.J. Mickel. 1980. A motion compensated shipboard precision balance system. *Deep-Sea Res.* 27: 965-970.
- Church, R.A. 2003. Archaeological assessment for a proposed 6-inch gas and 6-inch oil pipeline routes from Block 962 to Block 786, Viosca Knoll Area. Prepared by C & C Technologies, Inc. for Geoscience Earth & Marine Services, Inc. on behalf of Mariner Energy. Report submitted to the U.S. Dept. of the Interior, Minerals Management Service, Gulf of Mexico OCS Region, New Orleans, LA.
- Church, R., D. Warren, R. Cullimore, L. Johnston, W. Schroeder, W. Patterson, T. Shirley, M. Kilgour, N. Morris, and J. Moore. 2007. Archaeological and biological analysis of World War II shipwrecks in the Gulf of Mexico: Artificial reef effect in deep water. U.S. Dept. of the Interior, Minerals Management Service, Gulf of Mexico OCS Region, New Orleans, LA. OCS Study MMS 2007-015.
- Church, Robert. 2004. "Shipwreck and Sonar Contact ROV Investigation, Blocks 245 and 329, Green Canyon Area." Prepared by C & C Technologies, Inc. for GulfTerra Energy Partners, L.P. Report submitted to the U.S. Dept. of the Interior, Minerals Management Service, Gulf of Mexico OCS Region, New Orleans, LA.
- Church, R.A. and D.J. Warren. 2008. Viosca Knoll Wreck: Discovery and investigation of an early nineteenth-century sailing ship in 2,000 feet of water. U.S. Dept. of the Interior, Minerals Management Service, Gulf of Mexico OCS Region, New Orleans, LA. OCS Study MMS 2008-018.
- Church, Robert and Lynn Samuel. 2004. Archaeological, Engineering and Hazard Study for a Proposed 16-inch Oil Export Pipeline from Block 680, Green Canyon Area to Block 332, Ship Shoal Area. Prepared by C & C Technologies, Inc. for GulfTerra Energy Partners, L.P. Report submitted to the U.S. Dept. of the Interior, Minerals Management Service, Gulf of Mexico OCS Region, New Orleans, LA.
- Church, R., D. Warren, R. Cullimore, L. Johnston, W. Schroeder, W. Patterson, T. Shirley, M. Kilgour, N. Morris, and J. Moore. 2007. Archaeological and Biological Analysis of World War II Shipwrecks in the Gulf of Mexico: Artificial Reef Effect in Deep Water. U.S. Dept. of the Interior, Minerals Management Service, Gulf of Mexico OCS Region, New Orleans, LA. OCS Study MMS 2007-015. 387 pp.
- Clarke, K. R. and R. M. Warwick (2001). Change in marine Communities: an approach to statistical analysis and interpretation. Plymouth, England, PRIMER-E.

- Colin P (1975) *The neon gobies* T. F. H. Publ., Neptune City, NJ.
- Cordes, E.E., Bergquist, D.C., Predmore, B.L., Dienes, P., Jones, C., Telesnicki, G., Fisher, C.R., 2006. Alternate unstable states: convergent paths of succession in hydrocarbon-seep tubeworm-associated communities. *Journal of Experimental Marine Biology and Ecology* 339, 159-176.
- Cordes EE, McGinley M, Podowski EL, Becker, EL, Lessard-Pilon S, Viada S, Fisher CR. (2008) Coral communities of the deep Gulf of Mexico. *Deep-Sea Research I*. 10.1016/j.dsr.2008.03.005
- Continental Shelf Associates, Inc. 2002. Deepwater Program: Bluewater Fishing and Deepwater OCS Activity, Interactions between the Fishing and Petroleum Industries in Deepwaters of the Gulf of Mexico. A Final Report for the U.S. Department of the Interior, Minerals Management Service, Gulf of Mexico OCS Region, Metairie, LA. OCS Study MMS-2002-78.
- Continental Shelf Associates International, Inc. 2007. Characterization of northern Gulf of Mexico deepwater hardbottom communities with emphasis on *Lophelia* coral. U.S. Department of the Interior, Minerals Management Service, Gulf of Mexico OCS Region, Metairie, LA. OCS Study MMS-2007-44.
- Cowen RK, Paris CB, Srinivasan A (2006) Scaling of connectivity in marine populations. *Science* **311**, 522-527.
- Davies, P. S. (1989) Short-term growth measurements of corals using an accurate buoyant weighing technique *Mar. Biol.* Vol. 101: 389-395
- Dodds LA, Roberts JM, Taylor AC, Marubini F. 2007. Metabolic tolerance of the cold-water coral *Lophelia pertusa* (Scleractinia) to temperature and dissolved oxygen change. *Journal of Experimental Marine Biology and Ecology*. 349: 205-214.
- Eslinger, Kimberly. 2006. "Cultural Resources Assessment Report, "Medusa Prospect", Blocks 493-496, 537-540, 581-583, 626-627, and Vicinity, Mississippi Canyon Area." Prepared by C & C Technologies, Inc. for Murphy Exploration & Production Company. Report submitted to the U.S. Dept. of the Interior, Minerals Management Service, Gulf of Mexico OCS Region, New Orleans, LA.
- Etnoyer, P. and J. Warrenchuk (2007). A catshark nursery in a deep gorgonian field in the Mississippi Canyon, Gulf of Mexico. *Bulletin of Marine Science* 81: 553-559.
- Formolo, M.J., Lyons, T.W., Zhang, C., Kelley, C., Sassen, R., Horita, J., Cole, D.R., 2004. Quantifying carbon sources in the formation of authigenic carbonates at gas hydrate sites in the Gulf of Mexico. *Chemical Geology* 205, 253-264.
- Fossa, J. H., Mortensen, P. B., Furevik, D. M. 2002. The deep-water coral *Lophelia pertusa* in Norwegian waters: distribution and fishery impacts. *Hydrobiologia* 471:1-12.
- Frederiksen R, Jensen A, and Westerberg H (1992) The distribution of the scleractinian coral *Lophelia pertusa* around the Faroe Islands and the relation to internal mixing. *Sarsia* 77:157-171.

- Freiwald, A., R. Henrich, J. Patzold. 1997. Anatomy of a deep-water coral reef mound from Stjærnsund, west Finnmark, northern Norway. In James, N. P., Clarke, J. A. D., (eds.), *Cool-Water Carbonates*. Society of Sedimentary Geologists (SEPM), Special Publication. 56:141-162.
- Freiwald, A., Henrich, R., Patzold, J. 1997. Anatomy of a deep-water coral reef mound from Stjærnsund, west Finnmark, northern Norway. In James, N. P., Clarke, J. A. D., eds., *Cool-Water Carbonates*. Society of Sedimentary Geologists (SEPM), Special Publication. 56:140-161.
- Freiwald A (1998) Geobiology of *Lophelia pertusa* (Scleractinia) reefs in the North Atlantic. Habilitation, University of Bremen.
- Freiwald A., J.B. Wilson & R. Henrich. (1999). Grounding Pleistocene icebergs shape recent deep-water coral reefs. *Sed. Geol.* 125: 1-8.
- Freiwald, A., V. Huhnerbach, B. Lindberg, J.B. Wilson, and J. Campbell. 2002. The Sula Ridge Complex, Norwegian Shelf. *Facies* 47:179-200.
- Gass SE, Roberts JM (2006) The occurrence of the cold-water coral *Lophelia pertusa* (Scleractinia) on oil and gas platforms in the North Sea: colony growth, recruitment and environmental controls on distribution. *Marine Pollution Bulletin* 52: 549-559
- Hall-Spencer, J., Allain, V., Fossa, J. H. 2002. Trawling damage to Northeast Atlantic ancient coral reefs. *Proc. R. Soc. Lond. B.* 269:507-511.
- Harper, D. E., P. B. Eyo and G. P. Scott. 2000. Updated golden crab fishery trends and production model analysis based on trip report logbook and trip interview data collection programs. Contribution Number PRD-99/00-12. NMFS Southeastern Fisheries Science Center. Miami, Florida.
- Hayes, J.A. 1990. Distribution, movement and impact of the corallivorous gastropod *Coralliophila abbreviata* (Lamarck) on a Panamanian patch reef. *J. Exp. Mar. Biol. Ecol.* 142:25-42.
- Heifetz J. (2002) Coral in Alaska: distribution, abundance, and species associations. *Hydrobiologia* 471: 19-28.
- Hellberg ME (2006) No variation and low synonymous substitution rates in coral mtDNA despite high nuclear variation. *Bmc Evolutionary Biology* 6. *Evolution* 53, 806-817.
- Henry, L-A., Roberts, J.M., 2007. Biodiversity and ecological composition of macrobenthos on cold-water coral mounds and adjacent off-mound habitat in the bathyal Porcupine Seabight, NE Atlantic. *Deep-Sea Res. I.* 54 (4), 654–672.
- Horrell, Christopher E. 2006. “500 Fathoms of Water: The Archaeological Remains of a Mid-Late Nineteenth Century Sailing Vessel in the Gulf of Mexico.” *Proceedings of the Society for Historical Archaeology Conference*, Sacramento, CA (January).
- Hovland, M., Thomsen, E. 1997. Cold-water corals- are they hydrocarbon seep related? *Mar. Geol.* 137: 159-164.

- Hovland, M., Mortensen, R. B., Brattegard, T., Strass, P., Rokoengen, K. 1998. Ahermatypic coral banks off mid-Norway: Evidence of a link with seepage of light hydrocarbons. *Palaios* 13:189-200.
- Jensen A., and R. Frederiksen. 1992. The fauna associated with the bank-forming deepwater coral *Lophelia pertusa* (Scleractinia) on the Faroe shelf. *Sarsia* 77:53-69.
- Kleypas, J.A., R.A. Feely, V.J. Fabry, C. Langdon, C.L. Sabine, and L.L. Robbins, 2006. Impacts of Ocean Acidification on Coral Reefs and Other Marine Calcifiers: A Guide for Future Research, report of a workshop held 18–20 April 2005, St. Petersburg, FL, sponsored by NSF, NOAA, and the U.S. Geological Survey, 88 pp.
- Krieger KJ, Wing BL (2002) Megafauna associations with deepwater corals (*Primnoa* spp.) in the Gulf of Alaska. *Hydrobiologia* 471: 82-90
- Koslow J.A., K. Gowlett-Holmes, J.K. Lowry, T. O'Hara, G.C.B. Poore, and A. Williams. (2001). Seamount benthic macrofauna off southern Tasmania: community structure and impacts of trawling. *Mar. Ecol. Prog. Ser.* 213:111-125.
- Lockhart, F. D., W. J. Lindberg, N. J. Blake, R. B. Erdman, H. M. Perry, and R. S. Waller. 1990. Distributional differences and population similarities for two deep-sea crabs (Family Geryonidae) in the northeastern Gulf of Mexico. *Canadian Journal of Fisheries and Aquatic Sciences* 47: 2112-2122.
- Loya Y. and B. Rinkevich. (1980). Effects of oil pollution on coral reef communities. *Mar. Ecol. Prog. Ser.* 3: 167-180.
- Masson D.G, B.J. Bett, D.S.M. Billett, C.L. Jacobs, A.J. Wheeler and R.B. Wynn. (2003). The origin of deep-water, coral-topped mounds in the northern Rockall Trough, Northeast Atlantic. *Mar. Geol.* 194: 159-180.
- McEachran J.D. and J.D. Fechhelm. (1998). *Fishes of the Gulf of Mexico*. University of Texas Press, Austin, TX. 1112 pp.
- Mienis, F., H. C. de Stigter, M. White, G. Dulneveldc, H. de Haas and T. C. E. van Weering (2007). "Hydrodynamic controls on cold-water coral growth and carbonate-mound development at the SW and SE rockall trough margin, NE Atlantic ocean." *Deep-Sea Research Part I-Oceanographic Research Papers* 54(9): 1655-1674.
- Mikkelsen N, Erlenkauser H, Killingley JS, and Berger WH (1982) Norwegian corals: radiocarbon and stable isotopes in *Lophelia pertusa*. *Boreas* 5:163-171.
- Moore, D. R., Bullis, H. R. 1960. A deep-water coral reef in the Gulf of Mexico. *Bulletin of Marine Science*. Vol. 10:125-128
- Mortensen, P. B., Hovland, M., Brattegard, T., Farestveit, R. 1995. Deep-water bioherms of the scleractinian coral *Lophelia pertusa* L. at 64° on the Norwegian shelf: structure and associated megafauna. *Sarsia*. 80:145-158.

- Mortensen, P. B., Rapp, H. T. 1998. Oxygen and carbon isotope ratios related to growth line patterns in skeletons of *Lophelia pertusa* (L) (Anthozoa, scleractinia): implications for determinations of linear extension rates. *Sarsia*. 83:433-446.
- Neigel JE (1997) A comparison of alternative strategies for estimating gene flow from genetic markers. *Annual Review of Ecology and Systematics* **28**, 105-128.
- Neumann AC, Kofoed JW, and Keller GH (1977) Lithoherms in the Straits of Florida. *Geology* 5:4-10.
- Penn K, Wu D, Eisen JA, Ward N (2005) Characterization of Bacterial Communities Associated with Deep-Sea Corals on Gulf of Alaska Seamounts. *App Env Microbiol* 72(2): 1680-1683
- Perry, H., R. Waller, C. Trigg, J. McBee, R. Erdman, and N. Blake. 1995. A note on bycatch associated with deepwater trapping of *Chaceon* in the northcentral Gulf of Mexico. *Gulf Research Reports* 9(2): 139-142.
- Peterson C.H., M.C. Kennicutt, R.H. Green, P. Montagna, D.E. Harper, E.N. Powell and P.F. Roscigno. (1996). Ecological consequences of environmental perturbations associated with offshore hydrocarbon production: a perspective on long-term exposure in the Gulf of Mexico. *Can. J. Fish. Aquat. Sci.* 53: 2637-2654.
- Pritchard JK, Stephens M, Donnelly P (2000) Inference of population structure using multilocus genotype data. *Genetics* **155**, 945-959.
- Reed J.K. (2002). Comparison of deep-water reefs and lithoherms off southeastern USA. *Hydrobiologia* 471: 57-69.
- Reed, J. K., D. C. Weaver, and S. A. Pomponi. 2006. Habitat and fauna of deep-water *Lophelia pertusa* coral reefs off the southeastern U.S.: Blake Plateau, Straights of Florida, and Gulf of Mexico. *Bulletin of Marine Science* 78(2): 343-375.
- Reed, J. K., S. A. Pomponi, D. C. Weaver, C. K. Paull, and A. E. Wright. 2005. Deep-water sinkholes and bioherms of South Florida and the Pourtales Terrace- Habitat and Fauna. *Bulletin of Marine Science* 77(2):267-296.
- Risk M.J., J.M. Heikoop, M.G. Snow, R. Beukens. (2002). Lifespans and growth patterns of two deep-sea corals: *Primnoa resedaeformis* and *Desmophyllum cristagalli*. *Hydrobiologia* 471: 125-131.
- Ritger, S., B. Carson, and E. Suess, 1987, Methane-driven authigenic carbonates formed by subduction-induced pore-water expulsion along the Oregon/Washington margin: *Geological Society of America Bulletin*, v. 98, p. 147-156.
- Roberts, H.H. and P. Aharon, 1994, Hydrocarbon-derived carbonate buildups of the northern Gulf of Mexico continental slope: A review of submersible investigations: *Geo-Marine Letters*, v. 14, p. 135-148.
- Roberts, H.H, B.A. Hardage, W.W. Shedd, and J. Hunt, Jr., 2006, Seafloor reflectivity – An important seismic property for interpreting fluid/gas expulsion geology and the presence of gas hydrate: *The Leading Edge*, Society of Exploration Geophysicists, v. 25, p. 620-628.

- Roberts HH, Fisher CR, Bernard B, Brooks JM, Bright M, Carney RS, Cordes EE, Goehring L, Hourdez S, Hunt Jr. JL, Joye SM, MacDonald IR, Morrison C, Niemann H, Potter J, Samarkin V, Shedd W, Telesnicki G, Becker EL, Bernier M, Bowles M, Kupehik M, Lessard-Pilon S, Petersen C, Petersen J. (2007) *ALVIN* explores the deep northern Gulf of Mexico slope. *EOS* 88: 341-342.
- Roberts JM, and Anderson RM (2002) A new laboratory method for monitoring deep-water coral polyp behaviour. *Hydrobiologia* 471:143-148.
- Roberts J.M., D. Long, J.B. Wilson, P.B. Mortensen, J.D. Gage. (2003). The cold-water coral *Lophelia pertusa* (Scleractinia) and enigmatic seabed mounds along the north-east Atlantic margin: are they related? *Mar. Poll. Bull.* 46: 7-20.
- Roberts, J. M. (2005). "Reef-aggregating behaviour by symbiotic eunicid polychaetes from cold-water corals: do worms assemble reefs?" *Journal of the Marine Biological Association of the United Kingdom* 85(4): 813-819.
- Roberts, J.M., Wheeler, A.J., Freiwald, A., 2006. Reefs of the deep: The biology and geology of cold-water coral ecosystems. *Science* 312, 543-547.
- Rogers, A. D. 1999. The biology of *Lophelia pertusa* (Linnaeus 1758) and other deep-water reef forming corals and impacts from human activities. *Int. Rev. Hydrobiol.* 844:315-406.
- Rosenberg NA, Burke T, Elo K, *et al.* (2001) Empirical evaluation of genetic clustering methods using multilocus genotypes from 20 chicken breeds. *Genetics* **159**, 699-713.
- Ross, S. W. and A. M. Quattrini. 2007. The fish fauna associated with deep coral banks off the southeastern United States. *Deep-Sea Research I* 54: 975-1007.
- Sabater MG and Yap HT (2002) Growth and survival of coral transplants with and without electrochemical deposition of CaCO₃. *Journal of Experimental Marine Biology and Ecology* 272: 131-146.
- Schroeder, W. W. 2002. Observations of *Lophelia pertusa* and the surficial geology at a deep-water site in the northeastern Gulf of Mexico. *Hydrobiologia* 471:29-33.
- Sheriff, R.E, 2002, *Encyclopedic Dictionary of Applied Geophysics*, fourth Addition: Society of Exploration Geophysicists, Talsa, Oklahoma, 429 p.
- Starck WAI, Colin PL (1978) *Gramma linki*: a new species of grammid fish from the tropical western Atlantic. *Bull Mar Sci* **28**, 146-152.
- Sulak, K.J., Brooks, R.A., Luke, K.E., Norem, A.D., Randall, M., Quaid, A.J., Yeargin, G.E., Miller, J.M., Harden, W.M., Caruso, J.H., Ross, S.W., 2007. Demersal fishes associated with *Lophelia pertusa* coral and hard-substrate biotopes on the continental slope, northern Gulf of Mexico. *Bulletin of Marine Science.* 81:65-92
- Taylor MS, Hellberg ME (2003) Genetic evidence for local retention of pelagic larvae in a Caribbean reef fish. *Science* **299**, 107-109.

- Tissot, B. N., M. M. Yoklavich, M. S. Love, k. York, and M. Amend. 2006. Structure-forming invertebrates as components of benthic habitat on deep banks off southern California with special reference to deep sea corals. *Fish. Bull.* 104: 167–181
- Turley, C., Roberts, J.M. & Guinotte, J.J. (2007) Corals in deep water: Will the unseen hand of ocean acidification destroy cold water ecosystems? *Coral Reefs* 26: 445-448.
- Vardaro, M., I. R. MacDonald, L. C. Bender and N. L. Guinasso Jr. (2005). "Dynamic biological and physical processes observed at a gas hydrate outcropping on the continental slope of the Gulf of Mexico." *Geo-Marine Letters* 26(1): 6-15.
- Wakeley JW (2004) Metapopulation models for historical inference. *Molecular Ecology* **13**, 865-875.
- Waller, RG & Tyler PA. (2005) The reproductive biology of two deep-sea, reef-building scleractinians from the NE Atlantic Ocean. *Coral Reefs*, 24(3), 514-522.
- Wang JL, Whitlock MC (2003) Estimating effective population size and migration rates from genetic samples over space and time. *Genetics* **163**, 429-446.
- Warren, Daniel. 2006a. Archaeological assessment Report, “Shallow Coulomb” Prospect, Block 701 and Vicinity, Mississippi Canyon Area. Prepared by C & C Technologies, Inc. for Shell Exploration and Production. Report submitted to the U.S. Dept. of the Interior, Minerals Management Service, Gulf of Mexico OCS Region, New Orleans, LA.
- Warren, Daniel. 2006b. Archaeological Assessment Report, Blocks 1007 and 1008, Ewing Banks Area and Blocks 37 and 38, Green Canyon Area. Prepared by C & C Technologies, Inc. for ATP Oil and Gas. Report submitted to the U.S. Dept. of the Interior, Minerals Management Service, Gulf of Mexico OCS Region, New Orleans, LA.
- Wiggins, Melanie. 1995. *Torpedoes in the Gulf, Galveston and the U-boats, 1942-1943*. Texas A&M Press: College Station, TX.
- Wilson JB (1979b) Patch development of the deep-water coral *Lophelia pertusa* (L.) on Rockall Bank. *J. Mar. Biol. Ass. U.K.* 59:165-177.
- Yoklavich, M. and Love, M. (2005). Christmas tree corals: a new species discovered off southern California. *Current, the Journal of Marine Education*, **21**, 27-30.