

Dynamics of Suspended Sediments in an Optically Deep Coastal Region

J. H. Trowbridge
Woods Hole Oceanographic Institution
Woods Hole, MA 02543
phone: (508) 289-2296 fax: (508) 457-2194 email: jtrowbridge@whoi.edu

Award Number: N000149910213
<http://www.whoi.edu/science/AOPE/cofdl/jtrow.html>

LONG-TERM GOALS

The long-term goals associated with this project are to understand the suspension, transport, and deposition of fine sediments and their effect on optics in coastal regions.

OBJECTIVES

The specific objectives of this project are (1) to obtain direct oceanic measurements of the upward flux of fine sediments due to turbulence and the corresponding downward flux due to gravitational settling; (2) to test observationally the nearly universal assumption that fine sediments are transported vertically by turbulence in the same manner as heat (i.e., that turbulent Schmidt and Prandtl numbers are equal); and (3) to quantify observationally the relationship between the upward flux of fine sediments from the seafloor and the bottom stresses produced by waves and currents.

APPROACH

The approach requires measurements obtained by a near-bottom array of acoustic Doppler velocimeters (ADV) (e.g., Voulgaris and Trowbridge, 1998), manufactured by Sontek, Inc., and a nearby array of Laser In-Situ Sizing and Transmissometry (LISST) sensors (Agrawal and Pottsmith, 2000), manufactured by Sequoia Scientific, Inc. ADVs measure the three-dimensional velocity vector and the acoustical backscatter intensity in a sample volume with a scale of 1 cm. LISSTs measure particle size distribution, and a modified LISST with settling tube (LISST-ST) measures settling velocity as a function of particle size. ADV measurements permit calculation of ensemble-averaged (in this case, hour-averaged) acoustical intensity, denoted $\langle I \rangle$, and covariance of vertical velocity and acoustical intensity, denoted $\langle I'w' \rangle$. The idea is that LISST and LISST-ST measurements of particle size distribution and density will determine proper interpretation of the acoustical measurements, permitting meaningful computation of the upward flux of sediment due to turbulence, $\Sigma \langle c'_n w' \rangle$, as well as the downward flux due to settling, $\Sigma w_{sn} \langle c_n \rangle$. Here c_n is sediment concentration in the n th size class, w_{sn} is the corresponding settling velocity, primes denote turbulent fluctuations, brackets denote hour averages, and summation is over all size classes. Measurements of $\Sigma \langle c'_n w' \rangle$ and $\Sigma w_{sn} \langle c_n \rangle$ will permit evaluation of the hypothesis that turbulent Schmidt and Prandtl numbers are equal and quantification of the relationship between bottom stress and sediment flux from the seafloor.

Report Documentation Page

*Form Approved
OMB No. 0704-0188*

Public reporting burden for the collection of information is estimated to average 1 hour per response, including the time for reviewing instructions, searching existing data sources, gathering and maintaining the data needed, and completing and reviewing the collection of information. Send comments regarding this burden estimate or any other aspect of this collection of information, including suggestions for reducing this burden, to Washington Headquarters Services, Directorate for Information Operations and Reports, 1215 Jefferson Davis Highway, Suite 1204, Arlington VA 22202-4302. Respondents should be aware that notwithstanding any other provision of law, no person shall be subject to a penalty for failing to comply with a collection of information if it does not display a currently valid OMB control number.

1. REPORT DATE 30 SEP 2001	2. REPORT TYPE	3. DATES COVERED 00-00-2001 to 00-00-2001			
4. TITLE AND SUBTITLE Dynamics of Suspended Sediments in an Optically Deep Coastal Region		5a. CONTRACT NUMBER			
		5b. GRANT NUMBER			
		5c. PROGRAM ELEMENT NUMBER			
6. AUTHOR(S)		5d. PROJECT NUMBER			
		5e. TASK NUMBER			
		5f. WORK UNIT NUMBER			
7. PERFORMING ORGANIZATION NAME(S) AND ADDRESS(ES) Woods Hole Oceanographic Institution,,Woods Hole,,MA,02543		8. PERFORMING ORGANIZATION REPORT NUMBER			
9. SPONSORING/MONITORING AGENCY NAME(S) AND ADDRESS(ES)		10. SPONSOR/MONITOR'S ACRONYM(S)			
		11. SPONSOR/MONITOR'S REPORT NUMBER(S)			
12. DISTRIBUTION/AVAILABILITY STATEMENT Approved for public release; distribution unlimited					
13. SUPPLEMENTARY NOTES					
14. ABSTRACT The long-term goals associated with this project are to understand the suspension, transport, and deposition of fine sediments and their effect on optics in coastal regions.					
15. SUBJECT TERMS					
16. SECURITY CLASSIFICATION OF:			17. LIMITATION OF ABSTRACT	18. NUMBER OF PAGES	19a. NAME OF RESPONSIBLE PERSON
a. REPORT unclassified	b. ABSTRACT unclassified	c. THIS PAGE unclassified	Same as Report (SAR)	6	

WORK COMPLETED

This project is a collaborative effort with Y. C. Agrawal, of Sequoia Scientific, Inc., who is funded under a separate grant. The primary focus of the collaboration is participation in the 2000 and 2001 Hyperspectral Coupled Ocean Dynamics Experiments (HYCODE) at Rutgers University's LEO-15 site off New Jersey.

During the 2000 experiment, Trowbridge designed and supervised fabrication and deployment of a bottom tripod supporting ADVs at 0.7 and 3.5 m above bottom, fast-response thermistors near the ADV sample volumes, and a temperature-conductivity sensor at 4.5 m above bottom. Agrawal designed and supervised fabrication and deployment of a bottom tripod supporting a LISST at 2.0 m above bottom, a LISST-ST at 1.0 m above bottom, and a Miniature Scattering and Transmissometry (MSCAT) sensor at 0.2 m above bottom. Deployment of both tripods occurred during July near the main node at LEO-15, at a position where the mean depth is 16 m and the sand bottom is flat except for wave-formed ripples. Recovery occurred in September.

During the 2001 experiment, Trowbridge and Agrawal redeployed the two tripods at LEO-15. Trowbridge added a dop-beam, which measures vertical velocity and echo intensity at high frequency (375 Hz) and high resolution (0.012 m) along a vertical path with a range of 1.5 m. The dop-beam measurements will provide far more information about vertical flux of suspended sediments than will the ADVs.

Work to date also includes analysis of near-bottom ADV and LISST measurements obtained during the ONR-funded Coastal Mixing and Optics (CMO) experiment, which occurred during 1996-97 in the "mud patch" on the New England shelf, at a water depth of 70 m. As part of CMO, A. J. Williams, of the Woods Hole Oceanographic Institution, deployed a bottom tripod with an array of three ADVs, all at a height of 0.4 m above bottom, and Y. C. Agrawal deployed a nearby tripod with a LISST. The CMO measurements are useful for preliminary work on interpretation of combined ADV and LISST measurements, but are insufficient to address the above objectives, because LISST and ADV measurements were obtained at only one height and settling velocity was not measured.

RESULTS

Agrawal's results to date are summarized in a separate report. Trowbridge's results to date are based on analysis of ADV and LISST measurements obtained during CMO, and also on analysis of ADV and dop-beam measurements obtained during the 2000 and 2001 HYCODE experiment at LEO-15.

Analysis of ADV measurements during HYCODE 2000 indicates that a differencing operation (Trowbridge, 1998), performed on records obtained from the three spatially separated ADVs, removes wave contamination from estimation of the turbulence covariance $\langle I' w' \rangle$. ADV-derived records of $w_s \langle I \rangle$ and $\langle I' w' \rangle$ are well correlated and consistent in magnitude (Figure 1), if one assumes a fixed settling velocity of $w_s = 5 \times 10^{-4}$ m/s, which is a reasonable estimate for the HYCODE region (Agrawal and Pottsmith, 2000; Hill et al., 2001). Agreement between $w_s \langle I \rangle$ and $\langle I' w' \rangle$ is consistent with a balance between $\Sigma w_{sn} \langle c_n \rangle$ and $\Sigma \langle c'_n w' \rangle$, and indicates that, with proper interpretation based on LISST measurements, ADV measurements can be used to determine the vertical sediment flux due to turbulence.

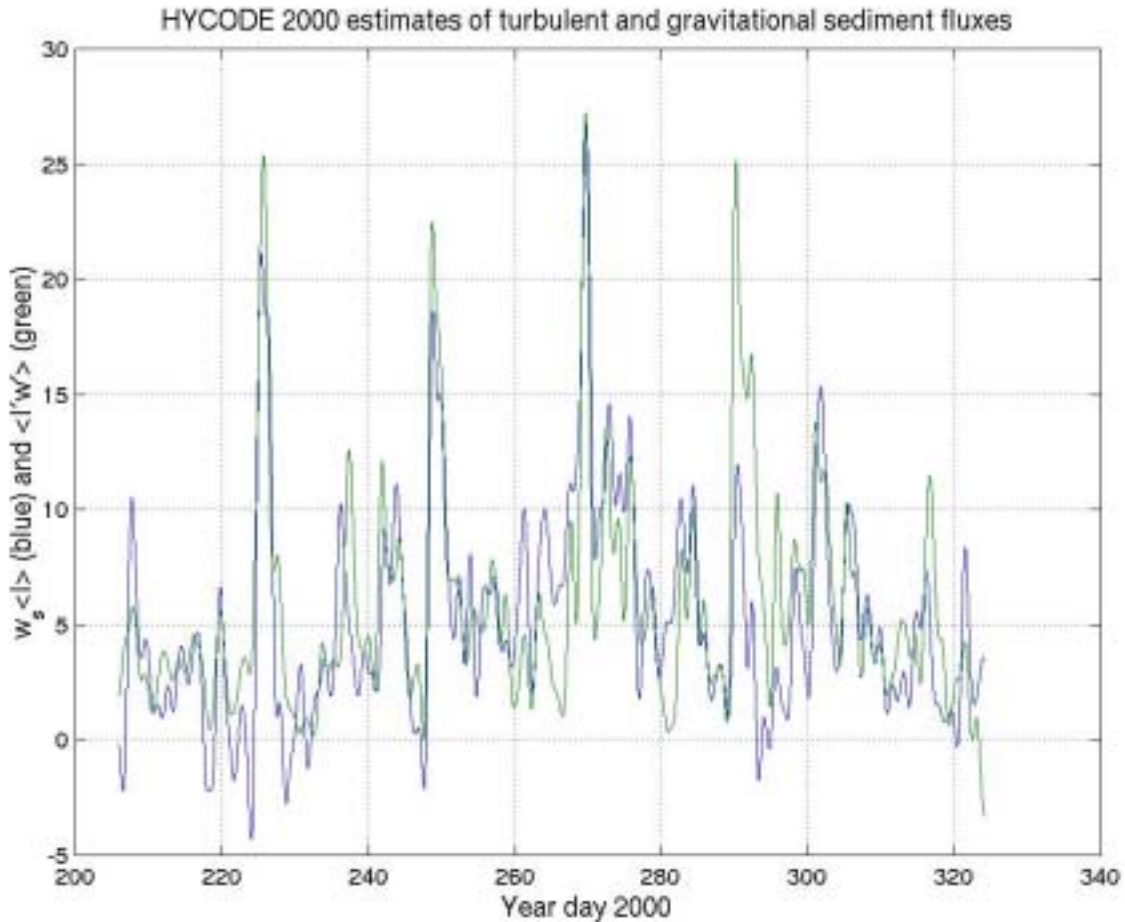


Figure 1: Estimates of vertical fluxes of sediment due to settling and turbulence during CMO. These estimates were obtained from ADV records of intensity I and vertical velocity $w <I>$ and $<I'w'>$ by using a fixed gain and offset to convert intensity I to concentration, and assuming a fixed settling velocity of $w_s = 5 \times 10^{-4}$ m/s. The good agreement between estimates of settling and turbulent fluxes suggests that, with proper interpretation based on LISST data, ADV measurements will provide meaningful estimates of turbulent sediment flux.

Preliminary analysis of the dop-beam measurements obtained during the 2001 HYCODE experiment have produced cospectra of vertical velocity and acoustic backscatter intensity (Figure 2), which indicate a vertical flux of suspended sediment at the expected scales. This result indicates that the dop-beam measurements will produced meaningful estimates of the vertical flux of suspended sediment.

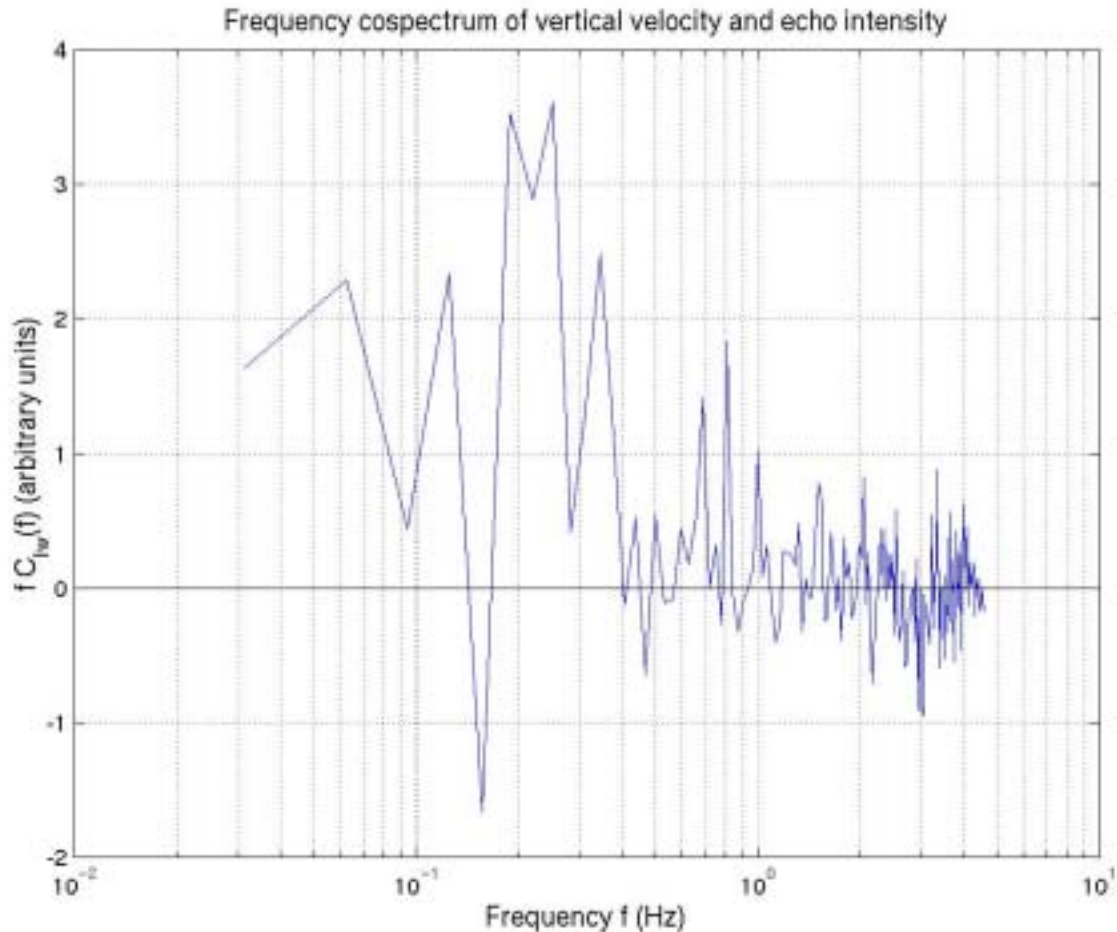


Figure 2: Results of 2001 HYCODE experiment at LEO-15: a sample cospectrum of vertical velocity and acoustic backscatter intensity, which is proportional to the vertical flux of suspended sediment caused by turbulence. This result indicates that the dop-beam measurements can produce quantitative estimates of the turbulent flux of suspended sediment.

IMPACT/APPLICATIONS

If successful, this study will produce the first direct measurements of sediment flux from the seafloor. This quantification of the bottom boundary condition for fine suspended sediment will dramatically improve numerical simulations of sediment concentrations in coastal regions, both in the case of HYCODE and in more general applications.

RELATED PROJECTS

Trowbridge's and Agrawal's participation in the ONR Coastal Mixing and Optics program have provided techniques and measurements required for execution and testing of the analyses carried out during this study.

REFERENCES

Agrawal, Y. C. and Pottsmith, H. C. 2000. Instruments for particle size and settling velocity observations in sediment transport. *Mar. Geol.* 168, 89-114.

Agrawal, Y. C. and Traykovski, P. Particles in the bottom boundary layer: concentration and size dynamics through events. *J. Geophys. Res.* 106, 9533-9542.

Hill, P. S., Voulgaris, G. and Trowbridge, J. H. Controls on floc size in a continental shelf bottom boundary layer. *J. Geophys. Res.* 106, 9543-9550.

Trowbridge, J. H. 1998. On a technique for direct measurement of turbulent Reynolds stress in the presence of surface waves. *J. Atmos. Oceanic Technol.* } 15, 290-298.

Voulgaris, G. and Trowbridge, J. H. 1998. Evaluation of the acoustic Doppler velocimeter for turbulence measurements. *J. Atmos. Oceanic Technol.* 15, 272-289.

PUBLICATIONS

Trowbridge J. H., Chapman, D. C. and Candela, J. 1997. Topographic effects, straits and the bottom boundary layer, *The Sea* (K. Brink and A. Robinson, eds.), 10, 63-68.

Voulgaris G. and Trowbridge, J. H. 1998. Evaluation of the acoustic Doppler velocimeter for turbulence measurements. *J. Atmos. Oceanic Technol.* 15, 272-289.

Trowbridge, J. H. 1998. On a technique for direct measurement of turbulent Reynolds stress in the presence of surface waves. *J. Atmos. Oceanic Technol.* 15, 290-298.

Trowbridge, J. H. and Lentz, S. J. 1998. Dynamics of the bottom boundary layer on the northern California shelf. *J. Phys. Oceanogr.* 28, 2075-2093.

Hill, P. S., Voulgaris, G. and Trowbridge, J. H. 2001. Controls on floc size in a continental shelf bottom boundary layer. *J. Geophys. Res.* 106, 9543-9550.

Lentz, S. J. and Trowbridge, J. H. 2001. A dynamical description of fall and winter mean current profiles over the northern California shelf. *J. Phys. Oceanogr.* 31, 914-931.

Shaw, W. J., Trowbridge, J. H. and Williams, A. J. 2001. The budgets of turbulent kinetic energy and scalar variance in the continental shelf bottom boundary layer. *J. Geophys. Res.* 106, 9551-9564.

Shaw, W. J. and Trowbridge, J. H. 2001. The direct estimation of near-bottom turbulent fluxes in energetic wave motions. *J. Atmos. Oceanic Technol.* in press.

Trowbridge, J. H. and Elgar, S. J. 2001. Turbulence measurements in the surf zone. *J. Phys. Oceanogr.* 31, 2403-2417.