

Protein degradation in a TX-TL cell-free expression system using ClpXP protease

AUTHORS:

Zachary Z. Sun¹, Jongmin Kim¹, Vipul Singhal², Richard M. Murray¹

¹ Division of Biology and Biological Engineering, California Institute of Technology, Pasadena, CA, USA

² Department of Computation and Neural Systems, California Institute of Technology

CORRESPONDING AUTHOR: Zachary Z. Sun, zsun@caltech.edu

DATE: 14 July 2014

NOTE: This is a technical report for future inclusion in work pending submission, review, and publication. Therefore, this work has **not** been peer-reviewed and is presented as-is.

Report Documentation Page

Form Approved
OMB No. 0704-0188

Public reporting burden for the collection of information is estimated to average 1 hour per response, including the time for reviewing instructions, searching existing data sources, gathering and maintaining the data needed, and completing and reviewing the collection of information. Send comments regarding this burden estimate or any other aspect of this collection of information, including suggestions for reducing this burden, to Washington Headquarters Services, Directorate for Information Operations and Reports, 1215 Jefferson Davis Highway, Suite 1204, Arlington VA 22202-4302. Respondents should be aware that notwithstanding any other provision of law, no person shall be subject to a penalty for failing to comply with a collection of information if it does not display a currently valid OMB control number.

1. REPORT DATE 14 JUL 2014		2. REPORT TYPE		3. DATES COVERED 00-00-2014 to 00-00-2014	
4. TITLE AND SUBTITLE Protein Degradation in a TX-TL Cell-free Expression System Using ClpXP Protease				5a. CONTRACT NUMBER	
				5b. GRANT NUMBER	
				5c. PROGRAM ELEMENT NUMBER	
6. AUTHOR(S)				5d. PROJECT NUMBER	
				5e. TASK NUMBER	
				5f. WORK UNIT NUMBER	
7. PERFORMING ORGANIZATION NAME(S) AND ADDRESS(ES) California Institute of Technology, Division of Biology and Biological Engineering, Pasadena, CA, 91125				8. PERFORMING ORGANIZATION REPORT NUMBER	
9. SPONSORING/MONITORING AGENCY NAME(S) AND ADDRESS(ES)				10. SPONSOR/MONITOR'S ACRONYM(S)	
				11. SPONSOR/MONITOR'S REPORT NUMBER(S)	
12. DISTRIBUTION/AVAILABILITY STATEMENT Approved for public release; distribution unlimited					
13. SUPPLEMENTARY NOTES					
14. ABSTRACT					
15. SUBJECT TERMS					
16. SECURITY CLASSIFICATION OF:			17. LIMITATION OF ABSTRACT	18. NUMBER OF PAGES	19a. NAME OF RESPONSIBLE PERSON
a. REPORT unclassified	b. ABSTRACT unclassified	c. THIS PAGE unclassified			

INTRODUCTION

An *in vitro* S30-based *Escherichia coli* expression system (“Transcription-Translation”, or “TX-TL”) has been developed as an alternative prototyping environment to the cell for synthetic circuits [1-5]. Basic circuit elements, such as switches and cascades, have been shown to function in TX-TL, as well as bacteriophage assembly [2, 6]. Circuits can also be prototyped from basic parts within 8 hours, avoiding cloning and transformation steps [7]. However, most published results have been obtained in a “batch mode” reaction, where factors that play an important role for *in vivo* circuit dynamics – namely protein degradation and protein dilution – are severely hindered or are not present. This limits the complexity of circuits built in TX-TL without steady-state or continuous-flow solutions [8-10]. However, alternate methods that enable dilution either require extra equipment and expertise or demand lower reaction throughput.

We explored the possibility of supplementing TX-TL with ClpXP, an AAA+ protease pair that selectively degrades tagged proteins [11], to provide finely-tuned degradation. The mechanism of ClpXP degradation has been extensively studied both *in vitro* and *in vivo* [12-15]. However, it has not been characterized for use in synthetic circuits – metrics such as toxicity, ATP usage, degradation variation over time, and cellular loading need to be determined. In particular, TX-TL in batch mode is known to be resource limited [16], and ClpXP is known to require significant amounts of ATP to unfold different protein targets [17, 18]. We find that ClpXP’s protein degradation dynamics is dependent on protein identity, but can be determined experimentally. Degradation follows Michaelis-Menten kinetics, and can be fine tuned by ClpX or ClpP concentration. Added purified ClpX is also not toxic to TX-TL reactions. Therefore, ClpXP provides a controllable way to introduce protein degradation and dynamics into synthetic circuits in TX-TL.

RESULTS AND DISCUSSION

There are two methods to supplement ClpXP into TX-TL – by expressing the proteins off of plasmid DNA or by adding purified protein. We first attempted to express both ClpX and ClpP off of DNA, and found that ClpX when expressed was able to degrade fluorescent *ssrA*-tagged reporters at a rate independent of ClpP concentration (data not shown). However, expressing ClpX posed two difficulties: degradation was rate-limited and time-delayed based on production rate of ClpX, and the load of ClpX expression reduced the expression of other synthetic circuits. To avoid these problems, we tried to purify a N-terminal His-tagged version of ClpX using a standard Ni-NTA procedure; however, we found that this version of ClpX lost activity after the purification procedure when stored in a previously developed glycerol-free buffer compatible with TX-TL [7]. We hypothesized that a linked-hexameric form previously developed would be more stable in solution [13]. With the His-tagged linked-hexameric N-terminal deletion form of ClpX, we were able to retain activity (**Fig. 1ab**). We refer to this as the ClpX form hereafter. To quantify degradation rates, we also purified fluorescent proteins with and without *-ssrA* tags (**Fig. 1c**).

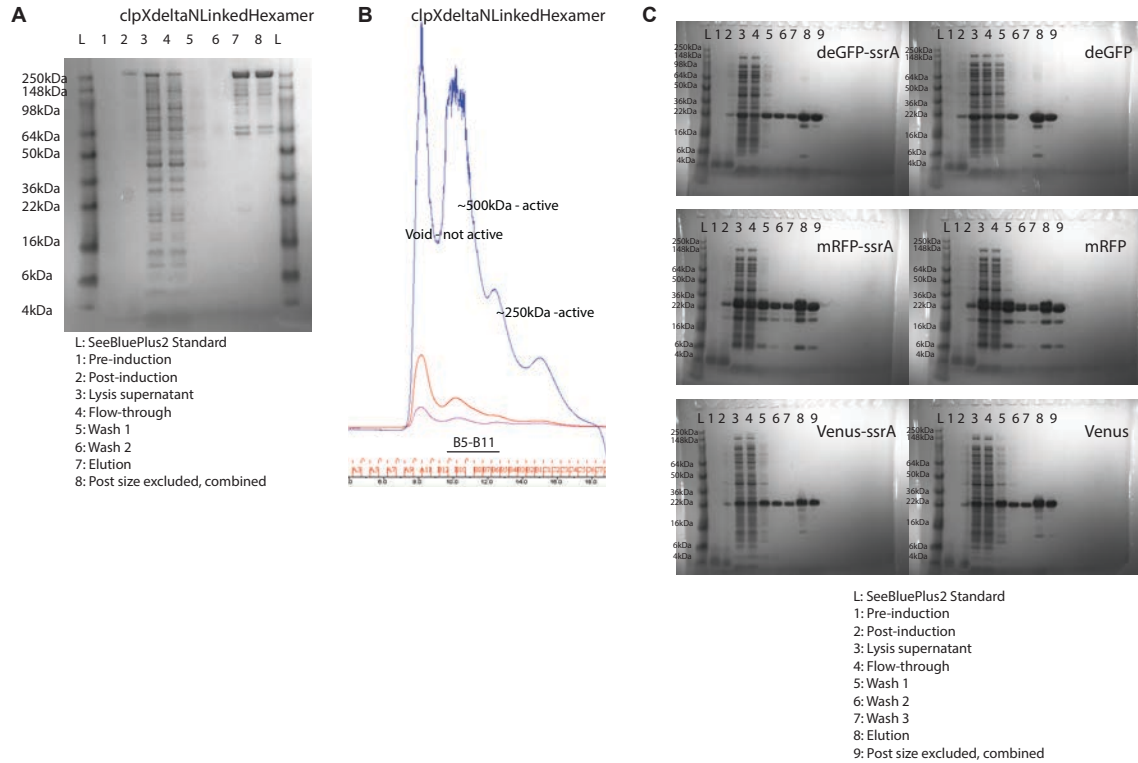


Figure 1. Purification of clpXdeltaNLinkedHexamer (“ClpX”) and fluorescent proteins. a) ClpX with a His6 tag is purified in a Ni-NTA column and run on denaturing SDS-PAGE gel. b) Size excluded chromatography of elute product on a Superdex 200 10/300 column, with a functionality test of active species. B5-B11 are fractions combined for forward use. c) Three fluorescent proteins (deGFP, mRFP, Venus), with or without ssrA tags, with a His6 tag are purified in a Ni-NTA column and run on denaturing SDS-PAGE gel. Last column is active, purified fractions combined for forward use.

We first verified the ability of purified ClpX to selectively degrade ssrA-tagged versions of deGFP, mRFP, and Venus over non-tagged versions (**Fig. 2**). ClpX is selective for ssrA-tagged versions over non-ssrA tagged versions, and has a degradation rate dependent on protein identity. This is similar to findings *in vitro*, where ClpX is known to have different unfolding rates and ATP hydrolysis rates depending on the target difficulty [17, 19]. We also determined the concentration dependence of ClpX to degradation rate and throughput (**Fig. 3ab**). Initially, we made a simple Michaelis-Menten model:

$$\frac{d[GFP]}{dt} = \frac{-k_{cat}[ClpXP][GFP]}{[GFP] + K_m}$$

$$[ClpXP] = \min ([ClpX], [ClpP])$$

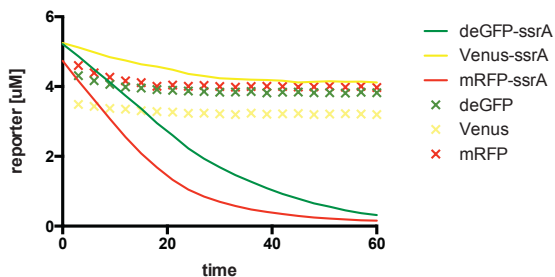


Figure 2. Degradation of deGFP, Venus, and mRFP by added ClpX. 400 nM of purified ClpX is combined with approximately 5 μM of purified fluorescent proteins with and without ssrA degradation tags in TX-TL.

We set K_m to 1.1 μM , k_{cat} to 0.9 min^{-1} based on previously published parameters [14], and estimated initial (native) concentrations of 20 nM ClpX and of 250 nM ClpP in TX-TL extract. We also ran a TX-TL experiment varying added ClpX concentrations from 0 nM to 400 nM. Comparing the modeling data to the experimental data, ClpXP degradation closely follows Michaelis-Menten kinetics as described. We also determined concentration dependence of ClpX to Venus-ssrA and mRFP-ssrA, and then plotted the degradation rate vs. time (**Fig. 3c**). Since the degradation rate changes over time as the concentration of substrate decreases, we plotted degradation rate vs. added ClpX concentration at $t = 16.5 \text{ min}$, which we took as an initial degradation rate (**Fig. 3d**). In this figure, the dependence of fluorescent reporter to added ClpX concentration can be clearly discerned, with a saturation point between 200-400 nM of additional ClpX added to the system, suggesting a rate-limiting native ClpP concentration. The decreased degradation rate of Venus-ssrA relative to deGFP-ssrA and mRFP-ssrA can also be seen. Based on this figure, additional ClpX is able to increase deGFP-ssrA degradation rates by 5-fold, mRFP-ssrA degradation rates by 4.2-fold, and Venus-ssrA degradation rates by 1.8-fold.

We additionally tried to supplement TX-TL with ATP and Mg, based on the known heavy usage of ClpX for protein unfolding (500 ATP per titin I27 subunit, $\sim 100 \text{ aa}$) [19]. With 200 nM of added ClpX in TX-TL, there was a clear effect on the degradation of Venus-ssrA over deGFP-ssrA and mRFP-ssrA, indicating that at working concentrations of proteins likely achievable in a typical TX-TL reaction ATP concentration was not rate-limiting except on hard-to-degrade proteins (**Fig. 4**).

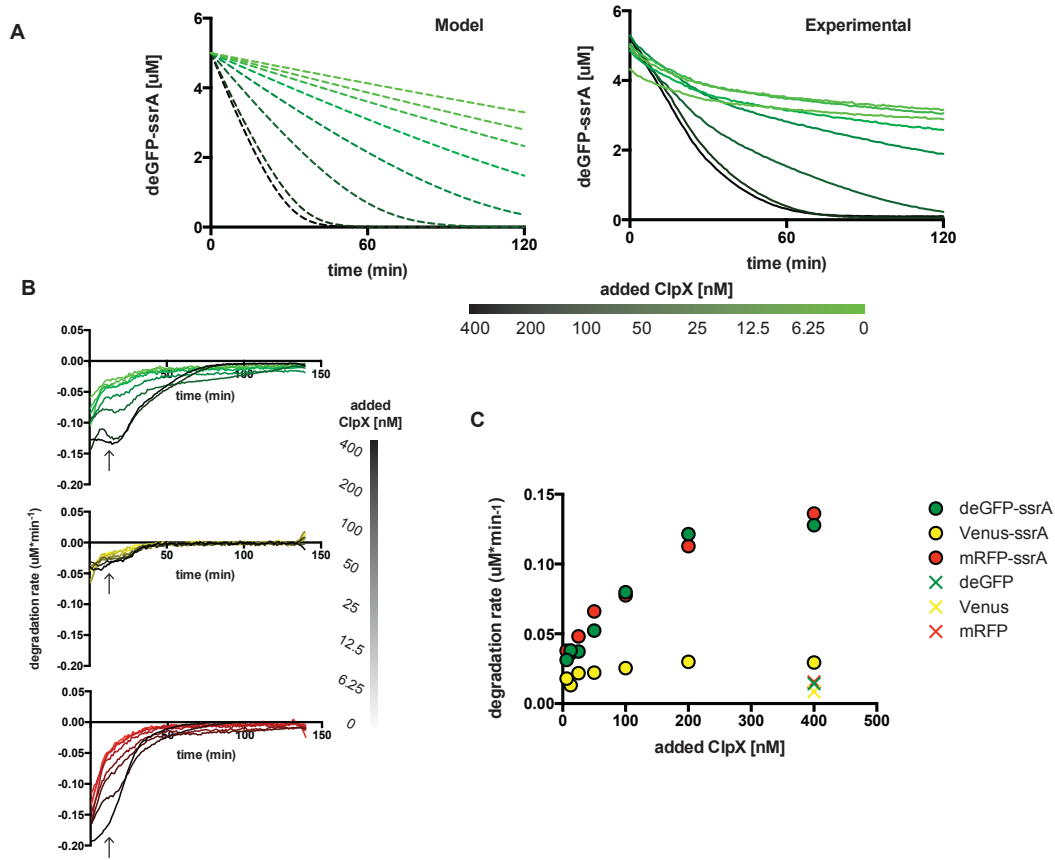


Figure 3. Dependence of degradation on ClpX concentration. A) Shown to the left is a Michaelis-Menten kinetics model of degradation of fluorescent GFP-ssrA over time, using K_m 1.1 μM , k_{cat} 0.9 min^{-1} , similar to literature values [14]. Added ClpX is varied from 400nM to 0nM. Shown to the right is experimental data demonstrating similar results as modeling data for deGFP-ssrA. B) Degradation rate of deGFP-ssrA, Venus-ssrA, and mRFP-ssrA over time with varied ClpX concentration. At the arrow is $t = 16.5$ min. C) Degradation rate plotted at $t = 16.5$ min as a function of added ClpX, for both ssrA tagged and non-ssrA tagged fluorescent proteins.

In order for supplemented ClpX to be a useful tool for controlled protein degradation, either the addition of ClpX or the ClpX storage buffer must not be toxic to expression of proteins off of DNA in TX-TL. We diagnosed this by diluting purified ClpX into a TX-TL reaction driving the production of deGFP off of a strong promoter, and saw no effect at saturating ClpX levels to DNA expression (**Fig. 5**). We also verified that ATP was not rate-limiting to ClpXP degradation and DNA expression by treating the degradation of mRFP-ssrA as a “background process” running during a TX-TL reaction producing deGFP (**Fig. 6**). As 10 μM of mRFP-ssrA is approaching the maximum protein concentration producible by TX-TL, this result suggests that ATP is at a saturating level in a typical TX-TL reaction. However, we did not test the combination of a difficult-to-degrade protein such as Venus-ssrA combined with the expression of saturating amounts of mRFP, which would support this conclusion.

We also explored increasing the amount of ClpP in a saturated ClpX TX-TL reaction to verify that ClpP was a limiting reagent. For simplicity, we expressed ClpP off of a strong promoter instead of adding purified amounts of ClpP. In the main extract used, “eZS6” derived from an ExpressIQ strain (New England Biolabs), ClpP was able to marginally increase degradation of deGFP-ssrA in the presence of 200 nM of ClpX (**Fig. 7a**). However, the ability to increase degradation was more pronounced in an alternate extract, “e8”, made from a BL21 Rosetta2 strain (Novagen) (**Fig. 7b**). This indicates that ClpXP degradation dynamics can be different depending on strain and on preparation, which could vary the amount of native ClpX or ClpP already present.

CONCLUSION

We explored the use of supplementing the ClpXP system inherent in TX-TL with purified ClpX protease to provide fine-tunable degradation to run synthetic dynamic circuits. ClpXP degradation closely follows Michaelis-Menten kinetics, but has varying degradation rates depending on substrate. Degradation can also be controlled by ClpX concentration, allowing for up to 5-fold increased degradation rates over non-tagged variants. Degradation does not limit the running of synthetic circuits when purified ClpX is added, and rates can be further increased by adding ClpP when ClpX reaches saturated conditions between 200-400 nM.

While ClpXP provides tunable degradation, it may not be an ideal substitute for protein dilution, as degradation is neither linear nor stepwise. However, due to the fact that degradation closely follows Michaelis-Menten kinetics, degradation can be included in a “biological breadboard”-type model [20] to predict amounts needed to implement circuit dynamics. This can be easily done for fluorescent proteins, but may require indirect assays for other commonly used circuit components such as activators or repressors. However, once substrate degradation rates are characterized supplementing ClpX is easy to accomplish and fairly predictable when adjusting for concentration.

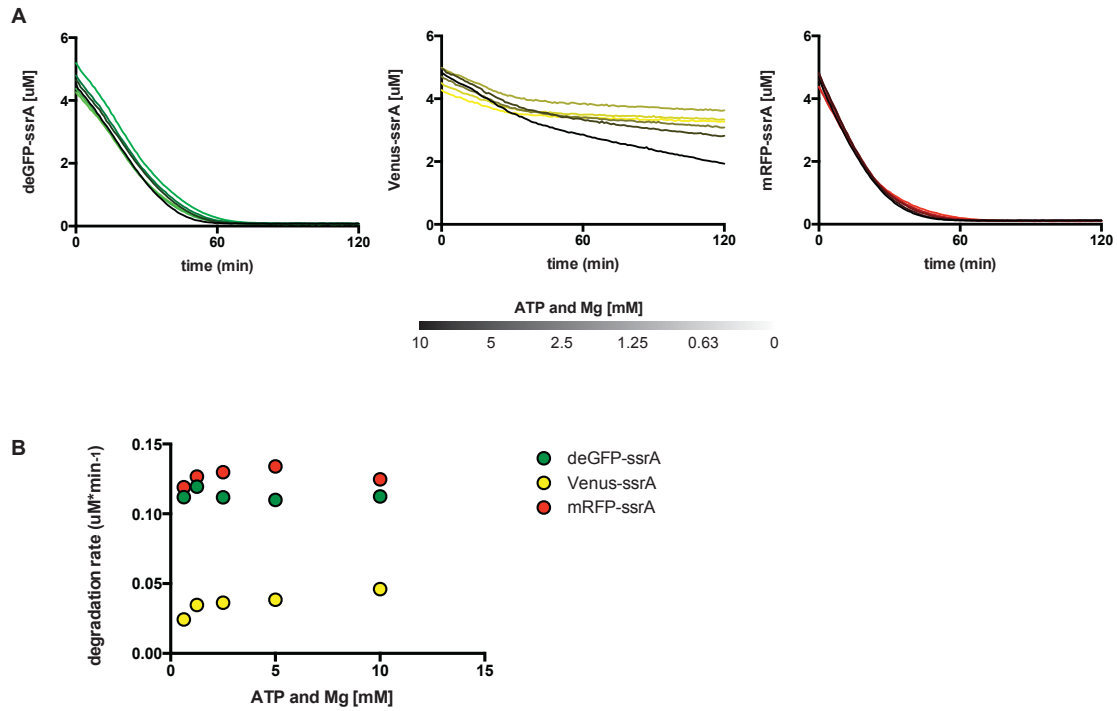


Figure 4. Dependence of degradation on added ATP and Mg. A) With added ClpX set to 200 nM, degradation of fluorescent ssrA tagged proteins is plotted as a function of time and additional ATP and Mg added to each reaction. B) Degradation rate at $t = 16.5$ min from above data is plotted as a function of additional ATP and Mg.

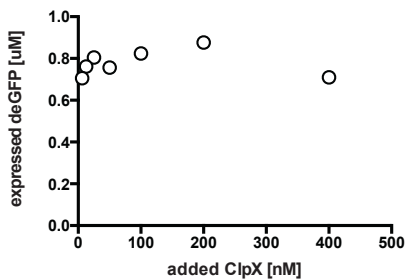


Figure 5. Toxicity of added ClpX to TX-TL expression. A plasmid expressing deGFP off of a strong promoter-UTR is added to a TX-TL reaction at 1 nM, and endpoint expression after 8 hours is plotted as a function of added, purified ClpX protein.

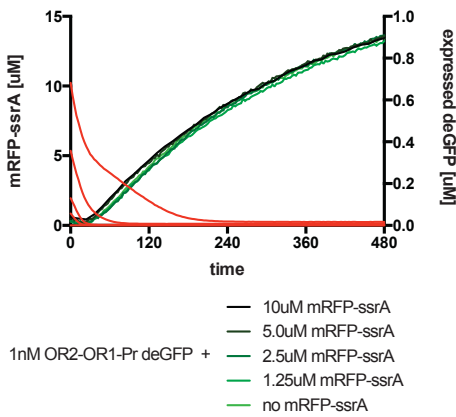


Figure 6. Effect of background degradation processes to TX-TL expression. A plasmid expressing deGFP off of a strong promoter-UTR is added to a TX-TL reaction at 1nM. In the same reaction, purified mRFP-ssrA is being degraded by 200 nM of added ClpX. No additional ATP or Mg is added to the reaction. 5 difference concentrations of mRFP-ssrA are tested. Both remaining mRFP-ssrA and deGFP expression are measured in real time.

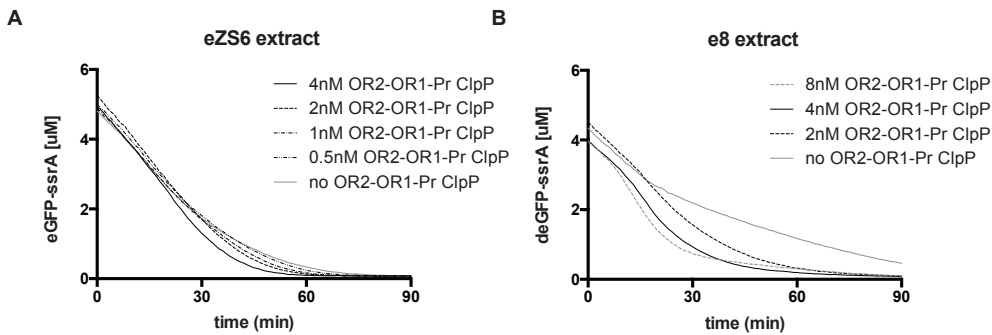


Figure 7. Effect of ClpP expression on degradation. A) In eZS6 extract, a plasmid expressing ClpP off of a strong promoter-UTR is added to a TX-TL reaction at varying concentrations in the presence of 200 nM of added purified ClpX. Degradation of deGFP-ssrA is plotted versus time. B) The same experiment as A), but in a different extract.

ACKNOWLEDGEMENTS

We thank Jan Kostecki for protein purification and size exclusion chromatography assistance, Rohit Sharma for initial testing of AAA+ degradation mechanisms, Robert Sauer and Karl Schmitz for advice in purifying ClpX, and Kyle Martin for laboratory assistance. This material is based upon work supported in part by the Defense Advanced Research Projects Agency (DARPA/MTO) Living Foundries program, contract number HR0011-12-C-0065 (DARPA/CMO). Z.Z.S. is also supported by a UCLA/Caltech Medical Scientist Training Program fellowship, and a National Defense Science and Engineering Graduate fellowship. The views and conclusions contained in this document are those of the authors and should not be interpreted as representing official policies, either expressly or implied, of the Defense Advanced Research Projects Agency or the U.S. Government.

MATERIALS AND METHODS

Cell-free extract preparation and execution:

Preparation and execution of TX-TL was according to previously described protocols [1], with a modification in strain to ExpressIQ (New England Biolabs) and lysis according to work by Jewett et al. (personal communication). This resulted in extract “eZS6” with conditions: 9.9 mg/mL protein, 9.5 mM Mg-glutamate, 95 mM K-glutamate, 0.33 mM DTT, 1.5 mM each amino acid except leucine, 1.25 mM leucine, 50 mM HEPES, 1.5 mM ATP and GTP, 0.9 mM CTP and UTP, 0.2 mg/mL tRNA, 0.26 mM CoA, 0.33 mM NAD, 0.75 mM cAMP, 0.068 mM folinic acid, 1 mM spermidine, 30 mM 3-PGA, 2% PEG-8000. Only “eZS6” is used to prevent extract-to-extract variation, except in the final figure where “e8” prepared from BL21 Rosetta2 (Novagen) using previously described protocols [1] was used. Reactions were conducted in 15 μ L in a 384-well plate (Nunc) at 29°C, and read in a Synergy H1/MF or H4 plate reader (Biotek). Settings used were: deGFP, 485 nm/515 nm gain 61; Venus, 505 nm/ 535 nm, gain 61; mRFP, 580 nm/ 610 nm, gain 100.

Protein purification:

For fluorescent proteins eGFP, mRFP, and Venus and variants eGFP-ssrA, mRFP-ssrA, and Venus-ssrA, coding sequences were cloned into a T7-lacO inducible vector containing a N-terminus His6 tag using standard techniques and propagated in a BL21-DE3 strain (New England Biolabs). Proteins were purified following a similar protocol as in [7], but were grown in TB broth in lieu of LB broth, induced with 1 mM IPTG (final concentration), and selected for a band between 25 kDa – 35 kDa corresponding to the fluorescent protein in question. Fluorescent proteins were further processed in a Supradex 20 10/300 column to select for pure, active proportions, and flash-frozen at -80°C in a storage buffer consisting of: 50 mM Tris-Cl pH 7.5, 100 mM NaCl, 1 mM DTT, 1 mM EDTA, 2% DMSO shown previously to be amenable to usage in TX-TL [7]. Final concentrations were: deGFP-ssrA, 164.8 μ M; deGFP, 184.8 μ M; mRFP-ssrA, 185.6 μ M; mRFP, 170.6 μ M; Venus-ssrA, 87.9 μ M; Venus, 147.5 μ M.

For ClpX, a monomeric N-terminal deletion variant Flag-clpXdeltaNLinkedHexamer-His6 was used [13] (Addgene #22143), as purifying the wildtype with a N-terminal His-tag using general Ni-NTA purification techniques resulted in a loss of activity. We followed a Ni-NTA purification procedure listed in [12], followed by Supradex 20 10/300 and functional testing for pure, active proportions above 250 kDa. Active proportions were flash frozen in the same buffer used for fluorescent proteins. Final concentration of ClpX was 1.95 μ M.

REFERENCES:

1. Sun, Z.Z., et al., *Protocols for Implementing an Escherichia Coli Based TX-TL Cell-Free Expression System for Synthetic Biology*. Journal of Visualized Experiments, 2013. **e50762**.
2. Shin, J. and V. Noireaux, *An E. coli cell-free expression toolbox: application to synthetic gene circuits and artificial cells*. ACS Synth Biol, 2012. **1**(1): p. 29-41.
3. Shin, J. and V. Noireaux, *Study of messenger RNA inactivation and protein degradation in an Escherichia coli cell-free expression system*. J Biol Eng, 2010. **4**: p. 9.
4. Shin, J. and V. Noireaux, *Efficient cell-free expression with the endogenous E. Coli RNA polymerase and sigma factor 70*. J Biol Eng, 2010. **4**: p. 8.
5. Noireaux, V., R. Bar-Ziv, and A. Libchaber, *Principles of cell-free genetic circuit assembly*. Proceedings of the National Academy of Sciences of the United States of America, 2003. **100**(22): p. 12672-12677.
6. Shin, J., P. Jardine, and V. Noireaux, *Genome Replication, Synthesis, and Assembly of the Bacteriophage T7 in a Single Cell-Free Reaction*. ACS Synthetic Biology, 2012. **1**(9): p. 408-413.
7. Sun, Z.Z., et al., *Linear DNA for rapid prototyping of synthetic biological circuits in an Escherichia coli based TX-TL cell-free system*. ACS Synth Biol, 2013.
8. Siuti, P., S.T. Retterer, and M.J. Doktycz, *Continuous protein production in nanoporous, picolitre volume containers*. Lab Chip, 2011. **11**(20): p. 3523-9.
9. Khnouf, R., D.J. Beebe, and Z.H. Fan, *Cell-free protein expression in a microchannel array with passive pumping*. Lab Chip, 2009. **9**(1): p. 56-61.
10. Niederholtmeyer, H., V. Stepanova, and S.J. Maerkl, *Implementation of cell-free biological networks at steady state*. Proc Natl Acad Sci U S A, 2013.
11. Gottesman, S., et al., *The ClpXP and ClpAP proteases degrade proteins with carboxy-terminal peptide tails added by the SsrA-tagging system*. Genes Dev, 1998. **12**(9): p. 1338-47.
12. Davis, J.H., T.A. Baker, and R.T. Sauer, *Engineering synthetic adaptors and substrates for controlled ClpXP degradation*. J Biol Chem, 2009. **284**(33): p. 21848-55.
13. Martin, A., T.A. Baker, and R.T. Sauer, *Rebuilt AAA + motors reveal operating principles for ATP-fuelled machines*. Nature, 2005. **437**(7062): p. 1115-20.

14. Hersch, G.L., T.A. Baker, and R.T. Sauer, *SspB delivery of substrates for ClpXP proteolysis probed by the design of improved degradation tags*. Proc Natl Acad Sci U S A, 2004. **101**(33): p. 12136-41.
15. Kim, Y.I., et al., *Dynamics of substrate denaturation and translocation by the ClpXP degradation machine*. Mol Cell, 2000. **5**(4): p. 639-48.
16. Siegal-Gaskins, D., et al., *Gene circuit performance characterization and resource usage in a cell-free "breadboard"*. ACS Synth Biol, 2014. **3**(6): p. 416-25.
17. Kenniston, J.A., et al., *Linkage between ATP consumption and mechanical unfolding during the protein processing reactions of an AAA+ degradation machine*. Cell, 2003. **114**(4): p. 511-20.
18. Burton, R.E., T.A. Baker, and R.T. Sauer, *Energy-dependent degradation: Linkage between ClpX-catalyzed nucleotide hydrolysis and protein-substrate processing*. Protein Sci, 2003. **12**(5): p. 893-902.
19. Baker, T.A. and R.T. Sauer, *ClpXP, an ATP-powered unfolding and protein-degradation machine*. Biochim Biophys Acta, 2012. **1823**(1): p. 15-28.
20. Tusa, Z.A., et al., *An In Silico Modeling Toolbox for Rapid Prototyping of Circuits in a Biomolecular "Breadboard" System*, in *2013 Conference on Decision and Control*. 2013, IEEE: Florence, Italy.