

available at www.sciencedirect.comjournal homepage: www.elsevier.com/locate/burns

Intestinal and gastric tonometry during experimental burn shock[☆]

Leopoldo C. Cancio^{a,*}, Toshiyuki Kuwa^{a,b}, Kotaro Matsui^{a,c}, Guy A. Drew^a, Eleuterio Galvez Jr.^a, Laura Lisa Sandoval^a, Bryan S. Jordan^a

^aU.S. Army Institute of Surgical Research, 3400 Rawley E. Chambers Avenue, Fort Sam Houston, TX 78234-6315, USA

^bTrauma and Critical Care Center, Hyogo Prefectural Nishinomiya Hospital, Nishinomiya City, Hyogo, Japan

^cEmergency and Critical Care Medicine, Showa University Hospital, Shinagawa, Tokyo, Japan

ARTICLE INFO

Article history:

Accepted 26 November 2006

Keywords:

Burns

Small intestine

Gastric mucosa

Intestinal mucosa

Shock

ABSTRACT

Introduction: The occurrence of organ failure following thermal injury, despite restoration of hemodynamic parameters and urine output during resuscitation, has led to efforts to measure end-organ perfusion. The purpose of this 24-h study was to evaluate the utility of gastrointestinal (GI) tonometry during burn shock and resuscitation.

Methods: Male swine ($n = 11, 23.3 \pm 0.9$ kg) were anesthetized with ketamine and propofol. A 70% full thickness burn was caused by immersion in 97 °C water for 30 s. Resuscitation with lactated Ringer's, 4 ml/kg/% burn, was begun at hour 6 and titrated to urine output (UO). Arterial blood gases and pulmonary artery catheter data were measured every 6 h. Gastric and ileal regional PCO_2 (PrCO_2) were measured continuously by air tonometry, and the gastric and ileal intramucosal pH (pHi) and PCO_2 gap ($\text{PrCO}_2 - \text{PaCO}_2$) were calculated every 6 h.

Results: Gastric pHi, ileal PrCO_2 , ileal pHi, and ileal PCO_2 gap (but not gastric PrCO_2 or PCO_2 gap) all decreased with shock and were restored to baseline levels by resuscitation. Changes in ileal PrCO_2 were of greater magnitude and demonstrated decreased variability than those in gastric PrCO_2 .

Conclusions: In this model, ileal tonometry outperformed gastric tonometry during burn shock and resuscitation.

© 2006 Elsevier Ltd and ISBI. All rights reserved.

1. Introduction

Despite fluid resuscitation adjusted to maintain an adequate urine output and hemodynamic stability, systemic metabolic acidosis and regional ischemia have been well documented during burn shock, and were associated with increased mortality, systemic inflammatory response syndrome (SIRS), acute respiratory distress syndrome (ARDS), and multiple organ dysfunction syndrome (MODS) [1–6]. For example, we recently reported that the mean base deficit and the mean

alveolar–arterial gradient during the first 2 days after burn, as well as the age, burn size, and inhalation injury, were independent predictors of mortality in burn patients [7]. Because of this, some authors have sought alternate systemic or regional measures of resuscitation adequacy.

Of the various regional organ systems, the gastrointestinal tract is particularly vulnerable to ischemia during burn shock. In dogs with 40% burns, blood flow to the small intestine and kidney (but not to the stomach or colon) was decreased at 1 h after burn [8]. In sheep with 40% burns and inhalation injury

[☆] The opinions or assertions contained herein are the private views of the authors and are not to be construed as official, or as reflecting the views of the Department of the Army or the Department of Defense.

* Corresponding author. Tel.: +1 210 916 3301.

E-mail address: Lee.Cancio@amedd.army.mil (L.C. Cancio).

0305-4179/\$32.00 © 2006 Elsevier Ltd and ISBI. All rights reserved.

doi:10.1016/j.burns.2006.11.013

Report Documentation Page

Form Approved
OMB No. 0704-0188

Public reporting burden for the collection of information is estimated to average 1 hour per response, including the time for reviewing instructions, searching existing data sources, gathering and maintaining the data needed, and completing and reviewing the collection of information. Send comments regarding this burden estimate or any other aspect of this collection of information, including suggestions for reducing this burden, to Washington Headquarters Services, Directorate for Information Operations and Reports, 1215 Jefferson Davis Highway, Suite 1204, Arlington VA 22202-4302. Respondents should be aware that notwithstanding any other provision of law, no person shall be subject to a penalty for failing to comply with a collection of information if it does not display a currently valid OMB control number.

1. REPORT DATE 01 NOV 2007		2. REPORT TYPE N/A		3. DATES COVERED -	
4. TITLE AND SUBTITLE Intestinal and gastric tonometry during experimental burn shock				5a. CONTRACT NUMBER	
				5b. GRANT NUMBER	
				5c. PROGRAM ELEMENT NUMBER	
6. AUTHOR(S) Cancio L. C., Kuwa T., Matsui K., Drew G. A., Galvez Jr. E., Sandoval L. L., Jordan B. S.,				5d. PROJECT NUMBER	
				5e. TASK NUMBER	
				5f. WORK UNIT NUMBER	
7. PERFORMING ORGANIZATION NAME(S) AND ADDRESS(ES) United States Army Institute of Surgical Research, JBSA Fort Sam Houston, TX 78234				8. PERFORMING ORGANIZATION REPORT NUMBER	
				10. SPONSOR/MONITOR'S ACRONYM(S)	
9. SPONSORING/MONITORING AGENCY NAME(S) AND ADDRESS(ES)				11. SPONSOR/MONITOR'S REPORT NUMBER(S)	
12. DISTRIBUTION/AVAILABILITY STATEMENT Approved for public release, distribution unlimited					
13. SUPPLEMENTARY NOTES					
14. ABSTRACT					
15. SUBJECT TERMS					
16. SECURITY CLASSIFICATION OF:			17. LIMITATION OF ABSTRACT UU	18. NUMBER OF PAGES 6	19a. NAME OF RESPONSIBLE PERSON
a. REPORT unclassified	b. ABSTRACT unclassified	c. THIS PAGE unclassified			

resuscitated according to the Parkland formula, Sakurai et al. demonstrated a decrease in ileal blood flow to 64% of baseline by 6 h after burn. At the same time, cardiac index only decreased to 83% of baseline and renal blood flow, unlike Asch's study, remained unchanged [9]. Ramzy et al. in a rat model used laser Doppler flowmetry to demonstrate decreased jejunal blood flow at 2–4 h. postburn [10]. The effect of these changes in intestinal blood flow on outcome was suggested by Levoyer et al., who found that increased intestinal permeability, which may result from ischemia, was associated with increased infection risk in burn patients [11].

The vulnerability of the gastrointestinal tract to after burn ischemia after burn generated interest in the use of tonometry during burn shock. Venkatesh performed gastric tonometry and subcutaneous gas measurements in burn patients; the gastric intramucosal pH (ϕ) and the subcutaneous PO_2 decreased, and the subcutaneous PCO_2 increased, with burn shock [12]. Lorente et al. found that the gastric intramucosal-intraarterial PCO_2 gap during the first 12 h after burn was significantly different between survivors and nonsurvivors of severe burn. However, only age, burn size, and the oxygen delivery 6 h after burn independently predicted mortality [13]. Recently, Holm et al. reported no correlation between the pHi (or the PCO_2 gap) and systemic hemodynamic variables or in-hospital survival in burn patients. These authors concluded that gastric tonometry is unsuited for monitoring splanchnic perfusion during burn shock [14]. Since tonometry is proposed as a more sensitive indicator of regional ischemia than are global indices, and since mortality may result from multiple factors in addition to resuscitation adequacy, whether tonometric information could be used to guide resuscitation remains undetermined.

In view of this continued controversy, the purpose of this study was to evaluate the utility of tonometry during burn resuscitation in a porcine model of severe thermal injury. We hypothesized that gastric and ileal pHi would deteriorate after burn, and that delayed fluid resuscitation would restore these values.

2. Methods

This study was approved by the institutional Animal Care and Use Committee. The care of all animals was in accordance with the guidelines set forth by the Animal Welfare Act and other federal statutes and regulations relating to animals and studies involving animals and by the 1996 *Guide for the Care and Use of Laboratory Animals* of the National Research Council. All animals were maintained in a facility approved by the Association for Assessment and Accreditation of Laboratory Animal Care International.

Eleven male Yorkshire swine (weight 23.3 ± 0.9 kg) were used for this study. After an overnight fast, they were sedated with intramuscular tiletamine/zolazepam (3 mg/kg, Ft. Dodge Laboratories, N.W. Fort Dodge, Iowa, USA) and atropine (0.1 mg/kg, Vedco Inc., St. Joseph, Missouri, USA). Ten minutes later, general anesthesia was induced using isoflurane (Ohmeda Caribe Inc., Gayama, Puerto Rico) administered through a nose cone. The pigs were then intubated with a 6.0–8.0 mm endotracheal tube (The Kendall Company, Mansfield,

Massachusetts, USA). The left carotid artery was cannulated with a 1.9 mm catheter (Becton Dickinson and Company, Sparks, Maryland, USA) for blood-pressure monitoring. An external jugular vein was cannulated with a 7 F introducer (Arrow International Inc., Reading, Pennsylvania, USA), for infusion of drugs and fluids. A pulmonary artery thermodilution catheter was inserted through the jugular venous introducer. A celiotomy was performed. A Foley catheter was inserted via a cystostomy and secured with a purse-string suture. A carbon-dioxide-permeable air tonometer (Tonocap, Datex-Engstrom, Tewksbury, MA) was placed through an ileotomy into the terminal ileum, and was secured with a purse-string suture. A second tonometer was placed orogastrically.

Postoperatively, animals were transported to an animal intensive-care unit where they were nursed on foam pads and continuously monitored. They were continuously anesthetized with intravenous infusions of ketamine and propofol throughout the remainder of the 24-h study. The position of the animals was changed every 2 h. Enteral nutrition and H_2 blockers were not given. Animals were mechanically ventilated in the volume-control mode (Servo 900C, Siemens, Munich, Germany) throughout the experiment. Tidal volume was maintained at 13 ml/kg, the fraction of inspired oxygen was 0.4, and the respiratory rate was adjusted to maintain the partial pressure of carbon dioxide in arterial blood (PaCO_2) at approximately 30–40 mmHg.

After vital signs stabilized, baseline studies were done. A 70% full-thickness scald injury was then induced by immersion in water at 97 °C for 30 s. Anatomic landmarks were used to ensure uniformity in burn size among animals. Animals were then returned to the animal intensive-care unit. No fluids were provided until 6 hours after burn. Between hours 6 and 8, delayed resuscitation was performed according to the Parkland formula (4 ml of lactated Ringer's solution/% burn/kg body weight/24 h), with infusion of the volume predicted for the first 8 h over postburn hours 6–8. Between hours 8 and 24 after burn, the lactated Ringer's solution was titrated to achieve a urine output of 1–2 ml/kg/h. Twenty-four hours after injury, animals were euthanized with an overdose of pentobarbital (Fatal-Plus, Dearborn, MI).

Arterial blood gases (ABGs) and pulmonary arterial (PA) catheter data were measured every 6 h. Gastric and ileal regional PCO_2 (PrCO_2) were measured continuously by air tonometry and recorded hourly (Tonocap, Datex-Engstrom, Tewksbury, MA). The gastric and ileal pHi were calculated every 6 h by means of the modified Henderson–Hasselbach equation:

$$\text{pHi} = 6.1 + \log_{10}([\text{HCO}_3^-]/(0.03 \text{PrCO}_2)).$$

The gastric and ileal PCO_2 gaps were calculated every 6 h according the formula:

$$\text{PCO}_2 \text{ gap} = \text{PrCO}_2 - \text{PaCO}_2.$$

The tonometric data were not used to alter the care of the animals.

Statistical analysis employed paired-samples t-tests comparing the baseline to hour 6 after burn, hour 6 to hour 24, and the baseline to hour 24 after burn (SPSS Version 14, Chicago, IL). p Values were Bonferroni-corrected for three non-orthogonal

Table 1

	Hour 0	Hour 6	Hour 12	Hour 18	Hour 24	<i>p</i> (0-6)	<i>p</i> (6-24)	<i>p</i> (0-24)
Heart rate	115 ± 5	176 ± 11	106 ± 4	111 ± 5	130 ± 6	<0.001	0.018	0.304
ABP mean	80 ± 3	71 ± 4	68 ± 4	64 ± 3	62 ± 4	0.056	0.344	0.059
CO	2.4 ± 0.4	1.5 ± 0.2	2.6 ± 0.6	2.6 ± 0.5	2.2 ± 0.2	0.033	0.056	0.996
PCWP	5 ± 0	3 ± 1	9 ± 1	10 ± 1	11 ± 2	0.006	0.003	0.011
pH Arterial	7.49 ± 0.02	7.44 ± 0.01	7.53 ± 0.01	7.49 ± 0.01	7.39 ± 0.05	0.012	0.567	0.211
Base excess	4.9 ± 0.8	1.0 ± 0.9	3.7 ± 0.7	2.9 ± 0.6	-1.0 ± 2.0	<0.001	0.987	0.041
HCO ₃	28.2 ± 1.0	24.3 ± 0.9	26.6 ± 0.7	39.6 ± 13.5	23.9 ± 1.4	<0.001	0.999	0.062
PaCO ₂	38.6 ± 2.6	36.6 ± 1.9	32.8 ± 1.3	35.2 ± 1.5	40.0 ± 2.7	0.593	0.449	0.955
PrCO ₂ gastric	55.2 ± 4.7	71.2 ± 6.2	63.7 ± 7.1	63.8 ± 6.2	63.6 ± 4.3	0.079	0.336	0.703
PrCO ₂ ileal	59.3 ± 3.4	85.4 ± 5.1	50.6 ± 2.3	53.2 ± 4.6	56.4 ± 4.1	<0.001	0.003	0.742
pHi gastric	7.34 ± 0.04	7.16 ± 0.04	7.27 ± 0.04	7.37 ± 0.10	7.18 ± 0.06	0.006	0.985	0.211
pHi ileal	7.31 ± 0.02	7.08 ± 0.03	7.35 ± 0.02	7.41 ± 0.09	7.22 ± 0.06	<0.001	0.209	0.617
PCO ₂ gap gastric	19.2 ± 5.6	34.2 ± 7.1	30.9 ± 6.7	23.0 ± 4.3	25.0 ± 6.4	0.129	0.266	0.844
PCO ₂ gap ileal	20.9 ± 3.0	48.7 ± 5.7	17.9 ± 2.2	18.0 ± 4.8	18.8 ± 4.3	0.003	0.003	0.891

ABP, arterial blood pressure. CO, cardiac output by thermodilution. PCWP, pulmonary capillary wedge pressure. HCO₃, arterial bicarbonate. PaCO₂, partial pressure of carbon dioxide in arterial blood. PrCO₂, partial pressure of carbon dioxide, measured by tonometry. pHi, intramucosal pH, calculated from PrCO₂. PCO₂ gap, PrCO₂ - PaCO₂. *p* (0-6), *p* value for paired samples t-test, hour 0 vs. hour 6. *p* (6-24), *p* value for paired samples t-test, hour 6 vs. hour 24. *p* (0-24), *p* value for paired samples t-test, hour 0 vs. hour 24. Significant *p* values are indicated in bold.

comparisons. A *p* value of 0.05 was considered significant. Data are presented as means ± S.E.M.

3. Results

Results are given in the Table 1. Burn shock (i.e., at 6 h after burn) was associated with significant tachycardia, and decreases in the cardiac output, pulmonary capillary wedge pressure, arterial base excess, and calculated arterial bicarbonate level. A decrease in the mean arterial blood pressure was not significant. Aggressive resuscitation with crystalloid increased the pulmonary capillary wedge pressure above baseline, and restored the cardiac output to values not different from baseline, but failed to improve the base excess at 24 h. With respect to tonometric variables, the ileal variables uniformly changed with burn shock, and were restored to values not different from baseline by resuscitation. Similar changes in the gastric variables were statistically significant only for the pHi during burn shock. Consistent with this, hourly data (Figs. 1-5) indicate that ileal PrCO₂ responded more dramatically to burn shock and more convincingly to resuscitation than did gastric PrCO₂.

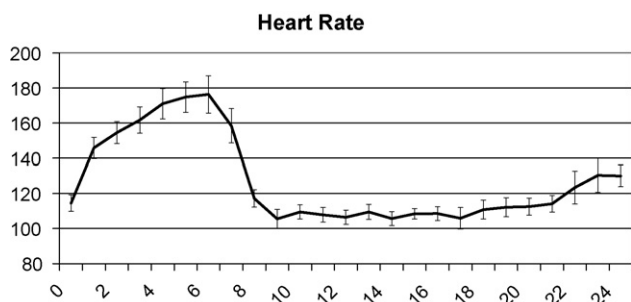


Fig. 1 – Heart rate as a function of time. Postburn hour is given on the abscissa in this and subsequent figures.

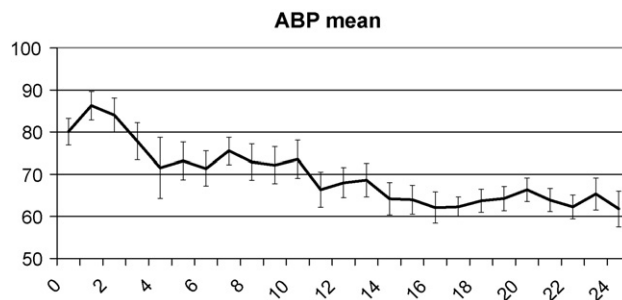


Fig. 2 – Mean arterial blood pressure, mmHg.

4. Discussion

The principle finding in this study was that ileal tonometry provided continuous data of potential utility for the resuscitation of animals with severe burn. Gastric tonometric data, by contrast, did not respond in as significant a fashion to burn shock and resuscitation.

The difference between the intestinal and gastric tonometric values may indicate the relative sensitivity of the small intestine to burn-shock-induced changes in regional perfusion [8,9]. Relatedly, in a porcine model of hemorrhagic shock, Walley et al. found that jejunal but not gastric tonometry correlated with superior mesenteric vein PCO₂ and oxygen delivery [15]. Puyana et al. measured small bowel and gastric pHi via implanted electrodes during a hemorrhagic shock study in swine. They reported more rapid and greater changes in small bowel pHi than in gastric pHi [16].

However, methodological problems with gastric tonometry have been identified and may have influenced the results of our study. Increased acid production may increase gastric CO₂ production, unless H₂ antagonists are used during resuscitation [17]. We did not do so in the present study. On the other hand, gastric feeding may also increase intraluminal CO₂ levels [18]; animals were not fed during our study. Saline

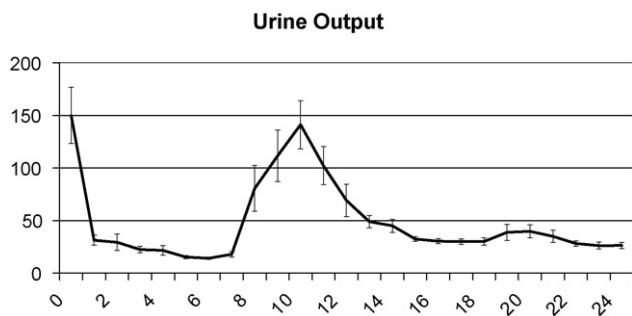


Fig. 3 – Urine output, ml/h.

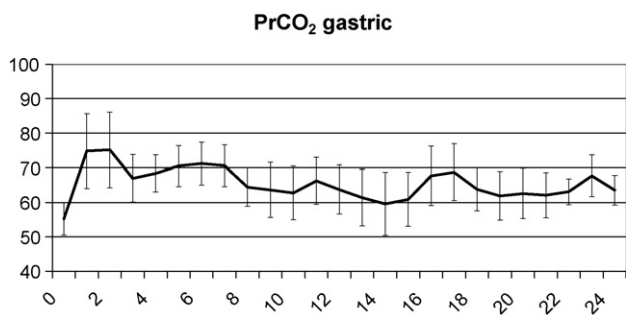


Fig. 4 – Gastric regional PCO₂, mmHg.

tonometers, which are difficult to use and require a dwell time to enable the CO₂ to diffuse into and dissolve in the saline, have been shown to yield erroneously low and poorly reproducible results [19]. We avoided this problem by using an air tonometer in our study.

The concept of intramucosal pH estimation by tonometry depends on the assumption that intramucosal HCO₃ and arterial HCO₃ are equilibrated. During rapidly changing physiologic states, this assumption may be incorrect. Thus, several authors have proposed using the PCO₂ gap instead of the pHi as a measure of intramucosal ischemia [20,21]. We observed similar trends in ileal pHi, PrCO₂, and PCO₂ gap in our study. However, the potential advantage of continuous PrCO₂ readings, which, unlike pHi and PCO₂ gap calculations are available from the air tonometer, does stand out from our study.

Considerable clinical experience has been amassed with gastric tonometry in non-burn critically ill patients [22-24]. This literature is controversial, but indicates that gastric

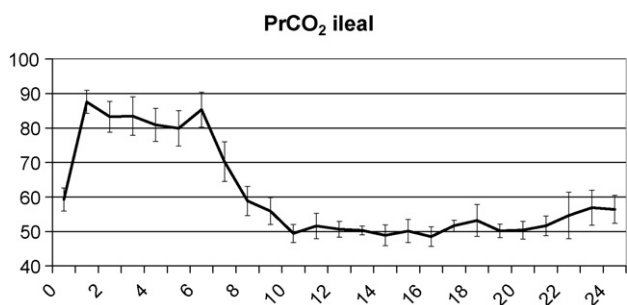


Fig. 5 – Ileal regional PCO₂, mmHg.

tonometry is one of the few end-organ-specific monitors approved for clinical use [23]. The Eastern Association for the Surgery of Trauma (EAST) recently published a clinical practice guideline on endpoints of resuscitation. They recognized that tonometry can provide data that can be used to predict risk of MODS or death [25]. How best to utilize the data from a tonometer has not been determined [24].

We did not use the tonometric data to guide fluid resuscitation in our study. We are not familiar with any studies in which this was done. Such a study would help place the utility of tonometry during burn resuscitation in perspective. However, as abdominal compartment syndrome is increasingly identified during burn resuscitation [26], tonometry may provide information about the adequacy of gastrointestinal perfusion in patients at risk for this syndrome. Thus, PCO₂ gap was predictive of abdominal compartment syndrome in trauma patients [27]. Furthermore, supranormal fluid resuscitation led to an increase in PCO₂ gap and in the risk of the syndrome [28]. We envision that during a difficult burn resuscitation, tonometry may help determine at what point a lot of fluid becomes too much fluid, and to gauge the risks and benefits of clinical interventions in that setting. On the other hand, Andel et al. used tonometry to demonstrate that early duodenal feeding was associated with a decrease in gastric PCO₂ gap, rather than a worsening of supply-demand mismatch in that organ [29]. Because burn patients are vulnerable to intestinal injury [11] or even infarction [30], tonometry may be useful to uncover occult ischemia during burn resuscitation.

Although we would like to recommend intestinal intubation and tonometry based on the results of this study [15], and despite the fact that jejunal feeding is the preferred practice at many centers, we recognize the technical difficulties involved in achieving this within the first hours of admission. Other authors have explored tonometry via other locations. The sublingual route is easier to access and does not require acid-suppressive therapy or discontinuation of enteral feeding. In several studies data obtained from this route has correlated well with that obtained from the stomach [31-33]. Rectal pH measurement and bladder tonometry [34,35] have been evaluated in animal models. The sigmoid route is particularly appealing for patients at risk for ischemia of that organ, such as during repair of abdominal aortic aneurysm [36]. Intraoperative tonometry can be performed [37].

In one hemorrhagic shock study, directly measured pHi reacted more quickly, and to a greater extent, than did pHi measured by tonometers [16]. In order to circumvent the shortcomings of tonometry, other methods of measuring or estimating intramucosal pH or metabolic status have been developed [38,39]. It seems likely that as these technologies improve, it will become desirable to monitor gut perfusion during shock more routinely, in order to provide what has been appropriately termed “Total Splanchnic Resuscitation” [40].

In conclusion, in a porcine model of severe thermal injury and delayed resuscitation, we demonstrated the responsiveness of ileal tonometry to shock and resuscitation. Gastric tonometry responded in a similar fashion, but to a lesser extent. This study suggests that tonometric data may be useful during burn resuscitation, but leave open the question of how best to use the data.

Acknowledgement

Funded by the Combat Casualty Care research program, U.S. Medical Research and Materiel Command, Fort Detrick, Maryland, USA.

REFERENCES

- [1] Kaups KL, Davis JW, Dominic WJ. Base deficit as an indicator or resuscitation needs in patients with burn injuries. *J Burn Care Rehabil* 1998;19(4):346-8.
- [2] Choi J, Cooper A, Gomez M, Fish J, Cartotto R. The 2000 Moyer Award. The relevance of base deficits after burn injuries. *J Burn Care Rehabil* 2000;21(6):499-505.
- [3] Cartotto R, Choi J, Gomez M, Cooper A. A prospective study on the implications of a base deficit during fluid resuscitation. *J Burn Care Rehabil* 2003;24(2):75-84.
- [4] Holm C, Melcer B, Horbrand F, Worl HH, von Donnersmarck GH, Muhlbauer W. Haemodynamic and oxygen transport responses in survivors and non-survivors following thermal injury. *Burns* 2000;26(1):25-33.
- [5] Jeng JC, Jablonski K, Bridgeman A, Jordan MH. Serum lactate, not base deficit, rapidly predicts survival after major burns. *Burns* 2002;28(2):161-6.
- [6] Light TD, Jeng JC, Jain AK, et al. The 2003 Carl A Moyer Award: real-time metabolic monitors, ischemia-reperfusion, titration endpoints, and ultraprecise burn resuscitation. *J Burn Care Rehabil* 2004;25(1):33-44.
- [7] Cancio LC, Galvez Jr E, Turner CE, Kypreos NG, Parker A, Holcomb JB. Base deficit and alveolar-arterial gradient during resuscitation contribute independently but modestly to the prediction of mortality after burn injury. *J Burn Care Res* 2006;27(3):289-96.
- [8] Asch MJ, Meserol PM, Mason Jr AD, Pruitt Jr BA. Regional blood flow in the burned unanesthetized dog. *Surg Forum* 1971;22:55-6.
- [9] Sakurai H, Traber LD, Traber DL. Altered systemic organ blood flow after combined injury with burn and smoke inhalation. *Shock* 1998;9(5):369-74.
- [10] Ramzy PI, Wolf SE, Irtun O, Hart DW, Thompson JC, Herndon DN. Gut epithelial apoptosis after severe burn: effects of gut hypoperfusion. *J Am Coll Surg* 2000;190(3):281-7.
- [11] LeVoyer T, Cioffi Jr WG, Pratt L, et al. Alterations in intestinal permeability after thermal injury. *Arch Surg* 1992;127(1):26-9.
- [12] Venkatesh B, Meacher R, Muller MJ, Morgan TJ, Fraser J. Monitoring tissue oxygenation during resuscitation of major burns. *J Trauma* 2001;50(3):485-94.
- [13] Lorente JA, Ezpeleta A, Esteban A, et al. Systemic hemodynamics, gastric intramucosal PCO₂ changes, and outcome in critically ill burn patients. *Crit Care Med* 2000;28(6):1728-35.
- [14] Holm C, Horbrand F, Mayr M, Handkel von Donnersmarck G, Muhlbauer W. Assessment of splanchnic perfusion by gastric tonometry in patients with acute hypovolemic burn shock. *Burns* 2006;32(6):689-94.
- [15] Walley KR, Friesen BP, Humer MF, Phang PT. Small bowel tonometry is more accurate than gastric tonometry in detecting gut ischemia. *J Appl Physiol* 1998;85(5):1770-7.
- [16] Puyana JC, Soller BR, Parikh B, Heard SO. Directly measured tissue pH is an earlier indicator of splanchnic acidosis than tonometric parameters during hemorrhagic shock in swine. *Crit Care Med* 2000;28(7):2557-62.
- [17] Heard SO, Helsmoortel CM, Kent JC, Shahnarian A, Fink MP. Gastric tonometry in healthy volunteers: effect of ranitidine on calculated intramural pH. *Crit Care Med* 1991;19(2):271-4.
- [18] Marik PE, Lorenzana A. Effect of tube feedings on the measurement of gastric intramucosal pH. *Crit Care Med* 1996;24(9):1498-500.
- [19] Levy B, Gawalkiewicz P, Vallet B, Briancon S, Nace L, Bollaert PE. Gastric capnometry with air-automated tonometry predicts outcome in critically ill patients. *Crit Care Med* 2003;31(2):474-80.
- [20] Schlichtig R, Mehta N, Gayowski TJ. Tissue-arterial PCO₂ difference is a better marker of ischemia than intramural pH (pHi) or arterial pH-pHi difference. *J Crit Care* 1996;11(2):51-6.
- [21] Lebuffe G, Vallet B, Takala J, et al. A European, multicenter, observational study to assess the value of gastric-to-ent tidal PCO₂ difference in predicting postoperative complications. *Anesth Analg* 2004;99(1):166-72.
- [22] Huang YC. Monitoring oxygen delivery in the critically ill. *Chest* 2005;128(5 Suppl. 2):554S-60S.
- [23] Heard SO. Gastric tonometry: the hemodynamic monitor of choice (Pro). *Chest* 2003;123(5 Suppl.):469S-74S.
- [24] Hameed SM, Cohn SM. Gastric tonometry: the role of mucosal pH measurement in the management of trauma. *Chest* 2003;123(5 Suppl.):475S-81S.
- [25] Tisherman SA, Barie P, Bokhari F, et al. Clinical practice guideline: endpoints of resuscitation. *J Trauma* 2004;57(4):898-912.
- [26] Ivy ME, Atweh NA, Palmer J, Possenti PP, Pineau M, D'Aiuto M. Intra-abdominal hypertension and abdominal compartment syndrome in burn patients. *J Trauma* 2000;49(3):387-91.
- [27] Balogh Z, McKinley BA, Holcomb JB, et al. Both primary and secondary abdominal compartment syndrome can be predicted early and are harbingers of multiple organ failure. *J Trauma* 2003;54(5):848-59.
- [28] Balogh Z, McKinley BA, Cocanour CS, et al. Supranormal trauma resuscitation causes more cases of abdominal compartment syndrome. *Arch Surg* 2003;138(6):637-42.
- [29] Andel H, Rab M, Andel D, et al. Impact of early high caloric duodenal feeding on the oxygen balance of the splanchnic region after severe burn injury. *Burns* 2001;27(4):389-93.
- [30] Goodwin Jr CW, McManus WF, Mason Jr AD, Pruitt Jr BA. Management of abdominal wounds in thermally injured patients. *J Trauma* 1982;22(2):92-7.
- [31] Marik PE. Sublingual capnography: a clinical validation study. *Chest* 2001;120(3):923-7.
- [32] Creteur J. Gastric and sublingual capnometry. *Curr Opin Crit Care* 2006;12:272-7.
- [33] Povoas HP, Weil MH, Tang W, Moran B, Kamohara T, Bisera J. Comparisons between sublingual and gastric tonometry during hemorrhagic shock. *Chest* 2000;118(4):1127-32.
- [34] Clavijo-Alvarez JA, Sims CA, Menconi M, Shim I, Ochoa C, Puyana JC. Bladder mucosa pH and PCO₂ as a minimally invasive monitor of hemorrhagic shock and resuscitation. *J Trauma* 2004;57(6):1199-209.
- [35] Chendrasekhar A, Pillai S, Fagerli JC, Barringer LS, Dulaney J, Timberlake GA. Rectal pH measurement in tracking cardiac performance in a hemorrhagic shock model. *J Trauma* 1996;40(6):963-7.
- [36] Donati A, Cornacchini O, Loggi S, et al. A comparison among portal lactate, intramucosal sigmoid Ph, and deltaCO₂ (PaCO₂ - regional PCO₂) as indices of complications in patients undergoing abdominal aortic aneurysm surgery. *Anesth Analg* 2004;99(4):1024-31.
- [37] Koga I, Stiernstrom H, Christiansson L, Wiklund L. Intraperitoneal and sigmoid colon tonometry in porcine

- hypoperfusion and endotoxin shock models. *Acta Anaesthesiol Scand* 1999;43(7):702-7.
- [38] Puyana JC, Soller BR, Zhang S, Heard SO. Continuous measurement of gut pH with near-infrared spectroscopy during hemorrhagic shock. *J Trauma* 1999;46(1):9-15.
- [39] Varela JE, Cohn SM, Diaz I, Giannotti GD, Proctor KG. Splanchnic perfusion during delayed, hypotensive, or aggressive fluid resuscitation from uncontrolled hemorrhage. *Shock* 2003;20(5):476-80.
- [40] Marik PE. Total splanchnic resuscitation, SIRS, and MODS. *Crit Care Med* 1999;27(2):257-8.