

ANALYSIS OF DATA FROM THE ACOUSTIC SURFACE REVERBERATION EXPERIMENT - ASREX

Dr. Harry Deferrari, Principal Investigator
Rosensteil School of Marine and Atmospheric Science
University of Miami
4600 Rickenbacker Causeway
Miami, FL 33149-1098
Phone: 305-361-4644, Fax: 305-361-4701, E-mail: hdeferrari@rsmas.miami.edu

Dr. Neil J Williams, Co-Principal Investigator
Rosensteil School of Marine and Atmospheric Science
University of Miami
4600 Rickenbacker Causeway
Miami, FL 33149-1098
Phone: 305-361-4656, Fax: 305-361-4701, E-mail: nwilliams@rsmas.miami.edu
Award #: N00014 96 10461
Research category: Acoustic Surface Scattering

LONG TERM GOALS

To contribute to a better understanding of the environmental parameters that are most appropriate for use in predicting acoustic surface scattering strengths (SSS) in both shallow and deep-water environments.

SCIENTIFIC OBJECTIVES

To quantify the contribution of environmental parameters to acoustic surface-zone scattering using multivariate analysis techniques and the acoustic and environmental data sets collected during the Acoustic Surface Reverberation Experiment (ASREX).

APPROACH

Time series of acoustic SSS and environmental parameters, including: wind speed and direction, significant wave height, air and sea temperatures, currents, near surface sound speed, and high frequency scattering cross-sections, were put on a common time base and analyzed using both traditional correlation and multivariate Fourier analysis techniques. Time series were also filtered to isolate extreme conditions of parameters to determine what effect, if any, they have in modulating the overall dominant wind speed effect.

WORK COMPLETED

Software, including a multivariate analysis code based on the work of Bendat and Piersol¹ was developed and refined. Time series of acoustic SSS at 100, 200, 400, and 800 Hz and environmental parameters from the ASREX experiment were analyzed using this software

Report Documentation Page

Form Approved
OMB No. 0704-0188

Public reporting burden for the collection of information is estimated to average 1 hour per response, including the time for reviewing instructions, searching existing data sources, gathering and maintaining the data needed, and completing and reviewing the collection of information. Send comments regarding this burden estimate or any other aspect of this collection of information, including suggestions for reducing this burden, to Washington Headquarters Services, Directorate for Information Operations and Reports, 1215 Jefferson Davis Highway, Suite 1204, Arlington VA 22202-4302. Respondents should be aware that notwithstanding any other provision of law, no person shall be subject to a penalty for failing to comply with a collection of information if it does not display a currently valid OMB control number.

| | | | | | |
|--|------------------------------------|---|---|---------------------------------|---------------------------------|
| 1. REPORT DATE 30 SEP 1997 | 2. REPORT TYPE | 3. DATES COVERED 00-00-1997 to 00-00-1997 | | | |
| 4. TITLE AND SUBTITLE Analysis of Data from the Acoustic Surface Reverberation Experiment - ASREX | | 5a. CONTRACT NUMBER | | | |
| | | 5b. GRANT NUMBER | | | |
| | | 5c. PROGRAM ELEMENT NUMBER | | | |
| 6. AUTHOR(S) | | 5d. PROJECT NUMBER | | | |
| | | 5e. TASK NUMBER | | | |
| | | 5f. WORK UNIT NUMBER | | | |
| 7. PERFORMING ORGANIZATION NAME(S) AND ADDRESS(ES) University of Miami, Rosenstil School of Marine and Atmospheric Science, 4600 Rickenbacker Causeway, Miami, FL, 33149 | | 8. PERFORMING ORGANIZATION REPORT NUMBER | | | |
| 9. SPONSORING/MONITORING AGENCY NAME(S) AND ADDRESS(ES) | | 10. SPONSOR/MONITOR'S ACRONYM(S) | | | |
| | | 11. SPONSOR/MONITOR'S REPORT NUMBER(S) | | | |
| 12. DISTRIBUTION/AVAILABILITY STATEMENT Approved for public release; distribution unlimited | | | | | |
| 13. SUPPLEMENTARY NOTES | | | | | |
| 14. ABSTRACT | | | | | |
| 15. SUBJECT TERMS | | | | | |
| 16. SECURITY CLASSIFICATION OF: | | | 17. LIMITATION OF ABSTRACT Same as Report (SAR) | 18. NUMBER OF PAGES 4 | 19a. NAME OF RESPONSIBLE PERSON |
| a. REPORT unclassified | b. ABSTRACT unclassified | c. THIS PAGE unclassified | | | |

and others developed by Drs. Frank Henyey and Jim Grochocinski of the University of Washington, Applied Physics Lab (UW/APL). ASREX data was provided to Dr. Eric Thorsos, also of UW/APL and Drs. Jeff Hanson and Michael Mandelburg of Johns Hopkins University, Applied Physics Lab (JH/APL) for use in their research. An ASREX web site was established at <http://www.rsmas.miami.edu/groups/asrex>.

RESULTS

Wind speed was found to be the dominant environmental parameter at all frequencies above 100 Hz, but significant wave height was found to contribute to an increasing portion of the SSS variance at the lower frequencies (see Figure 1). Acoustic SSS at 100 Hz was found to have little dependence on the wind speed and had levels consistent with rough surface scattering except at the highest wind speeds (i.e. > 18 M/s). Overall maximum coherence values for the wind speed was 0.9 and for the significant wave height was 0.8 for the 200-800 Hz measurements. Wind stress and ambient noise were found to have coherence comparable to the wind and wave height respectively.

Quantities measured and derived from the instruments used to quantify the bubble field during ASREX had strong correlation with the SSS values as well-though not as high as the wind speed or wave parameters. Of these the logarithm of the depth averaged air volume derived from the sound speed measurements made by Dr. Ken Melville's group had the highest correlation, 0.7 and the e-folding depth derived from Dr. David Farmer's instruments was only slightly less correlated, 0.6. The latter data was somewhat undersampled (sample rate = 2 samples/day) which might explain the lower coherence values.

Air-sea temperature difference (AT), which is indicative of the stability of the air column close to the air/sea interface, was found to be a strong modulator of SSS under certain conditions. When results taken at the same wind speeds were compared for extreme values of AT, discrepancies of up to 10 dB in SSS were found. This effect is greatest for 800 Hz at 10-12 deg grazing and decreases with increasing grazing angle disappearing altogether above 28-deg grazing. This is consistent with a review of other experimental data made by Dr. Ken Gilbert of Penn State University² and with observations of bubble clouds made by Dr. S. A. Thorpe.³ Extreme values of rainfall (derived from ASREX ambient noise measurements by Dr. Jeff Nystuen of UW/APL) were also found to effect SSS values, but to a much less extent.

The relationship between SSS and a number of other parameters (i.e. wave age, wave dissipation rate, current, etc.) were investigated, but none was found to be a more significant indicator of the SSS than the aforementioned wind and wave parameters.

IMPACT/APPLICATIONS

The software developed will be used in future shallow water scattering experiments to analyze the environmental dependencies of acoustic parameters such as surface and bottom scattering strengths. The effect of extreme values of air-sea temperature difference on SSS is significant and should be included in the analysis of related data sets such as those from the Critical Sea Test (CST) experiments. The ASREX data set is a large and comprehensive one and should be used in a continuing effort to understand the statistics of the scattering process.

TRANSITIONS

ASREX data was provided to Dr. Eric Thorsos, also of UW/APL and Drs. Jeff Hanson and Michael Mandelburg of Johns Hopkins University, Applied Physics Lab (JH/APL) for use in their research. Dr. Thorsos is studying the statistics of the surface scattering processes⁴ and Drs. Hanson and Mandelburg are analyzing CST data and investigating the relationship between wave dissipation rate and surface scattering⁵. A web page has been established at <http://www.rsmas.miami.edu/groups/asrex>.

RELATED PROJECTS

Proposed research for the upcoming fiscal year will utilize the ASREX instrumentation and new equipment purchased under an ONR-sponsored equipment grant to continue our investigations of acoustic propagation in shallow waters utilizing a new facility to be established at the South Florida Testing Facility of the Naval Surface Warfare Center. Signal analysis software developed in FY97 will be used to analyze data collected in future experiments.

REFERENCES

¹J. S. Bendat and A. G. Piersol, *Random data: Analysis and Measurement Procedures*. Wiley-Interscience, 1971.

²K. Gilbert, April 1997. Personal communication.

³S. A. Thorpe, "On the clouds of bubbles formed by breaking wind-waves in deep water, and their role in air-sea gas transfer," *Phil Trans. R. Soc. Lond. A* 304, 155-210, 1982.

⁴E.I. Thorsos, D. B. Percival and K. M. Bader, "Modeling low frequency surface scatter statistics," *J Acoust. Soc. Am.*, 100, 2799(A), 1996

⁵J. L. Hanson and M. D. Mandelberg, "Surface wave parameters for the prediction of breaking waves and acoustic backscatter," *J Acoust. Soc. Am.*, 100, 2806 (A)

ASREX '93 , bin: 28->30 deg, 35 pt freq avg

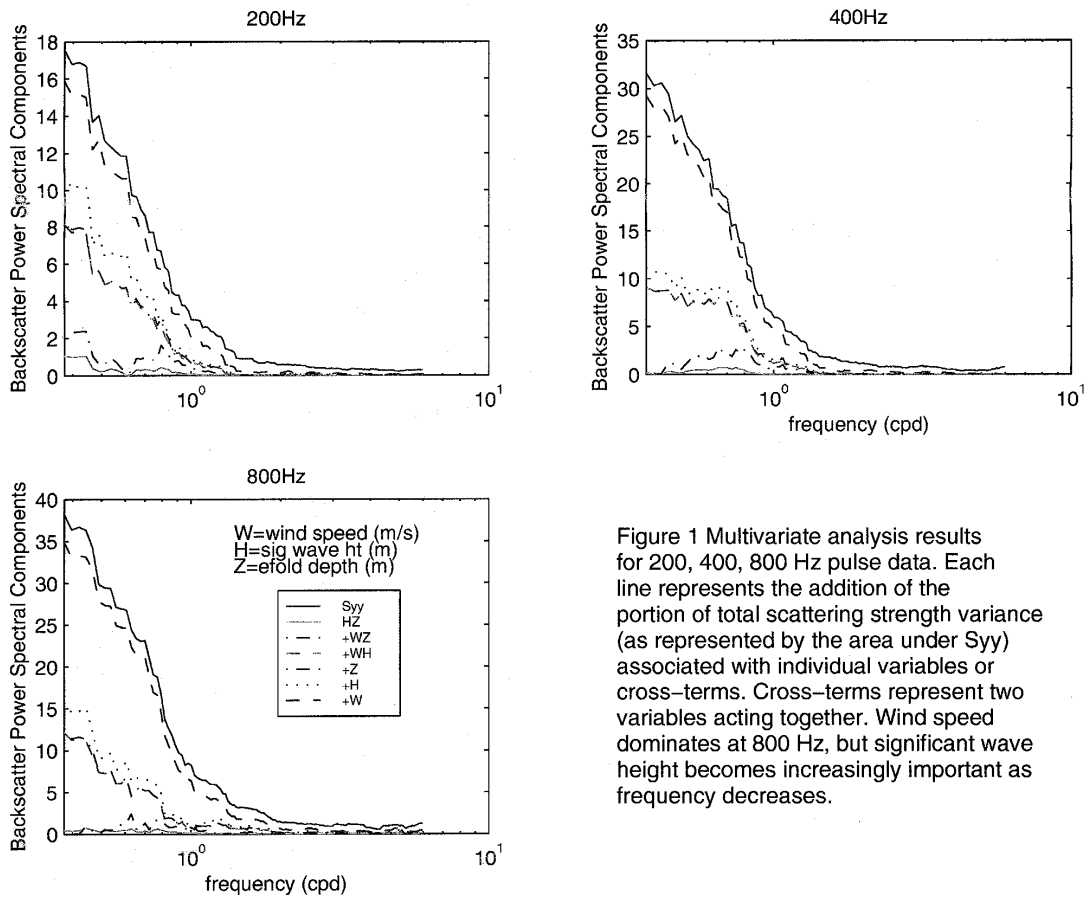


Figure 1 Multivariate analysis results for 200, 400, 800 Hz pulse data. Each line represents the addition of the portion of total scattering strength variance (as represented by the area under Syy) associated with individual variables or cross-terms. Cross-terms represent two variables acting together. Wind speed dominates at 800 Hz, but significant wave height becomes increasingly important as frequency decreases.