

Rough Surface Effects on Microwave Propagation over the Sea

Kenneth D. Anderson
SPAWARSYSCEN San Diego 2858
49170 Propagation Path
San Diego, CA 92152-7385

Phone: 619-553-1420 fax: 619-553-1417 email: kenn@spawar.navy.mil

N0001403WX20540

LONG TERM GOALS

The long-term goals of the research are to understand the effects of marine boundary layer atmospheric mean and turbulence structures on the propagation of microwave signals over the ocean. For wind speeds greater than 10 m s^{-1} , it has been hypothesized that ocean surface waves distort the vertical refractivity profile leading to reduced microwave signal levels. Previous at-sea experiments have shown resonant effects of waves on the momentum flux and turbulence at wind-wave and swell scales. Current research focuses on wave effects on the scalars, temperature and humidity, that affect propagation.

OBJECTIVES

The objective is to obtain accurate mean temperature and humidity profiles over the ocean together with the surface fluxes of momentum, sensible heat, and latent heat. From these mean profiles establish the form of the scalar temperature and humidity profile functions and the resulting vertical refractivity profile. With sea surface elevation measurements and data from three sets of microwave transmitters at two heights, determine the significant factors (e.g., wind speed, significant wave height, wave age) affecting errors in predicting microwave signal strength from in situ meteorological measurements.

APPROACH

The approach is to perform a surface-layer experiment off of the Hawaiian Island of Oahu from the Research Platform Floating Instrument Platform (R/P FLIP). This experiment is called the Rough Evaporation Duct (RED) experiment. R/P FLIP hosted the primary instrumentation suite. The University of California, Irvine, (UCI) provided a vertical array of mean and fast response meteorological sensors (pressure, temperature, humidity, wind speed and direction) and a set of 1D sea surface elevation wave staffs. The Space and Naval Warfare Systems Center, San Diego (SSC SD) provided three sets of microwave transmitters at two heights (4 and 12 m asl), an infrared source, and aerosol particle counters. The Netherlands Physics and Electronics Laboratory (FEL/TNO) provided additional aerosol sensors and a scanning lidar. The Scripps Institution of Oceanography provided optical bubble sensors and an acoustic Doppler profiler. SSC SD established two land sites, one providing a 10 km electrooptical (EO) path and the other a 25.7 km microwave path. The Defense Research Establishment, Valcartier (Canada) provided a mean meteorological buoy, located mid way between R/P FLIP and the microwave receiver site. The Naval Postgraduate School (NPS) provided a

Report Documentation Page

Form Approved
OMB No. 0704-0188

Public reporting burden for the collection of information is estimated to average 1 hour per response, including the time for reviewing instructions, searching existing data sources, gathering and maintaining the data needed, and completing and reviewing the collection of information. Send comments regarding this burden estimate or any other aspect of this collection of information, including suggestions for reducing this burden, to Washington Headquarters Services, Directorate for Information Operations and Reports, 1215 Jefferson Davis Highway, Suite 1204, Arlington VA 22202-4302. Respondents should be aware that notwithstanding any other provision of law, no person shall be subject to a penalty for failing to comply with a collection of information if it does not display a currently valid OMB control number.

1. REPORT DATE 30 SEP 2003		2. REPORT TYPE		3. DATES COVERED 00-00-2003 to 00-00-2003	
4. TITLE AND SUBTITLE Rough Surface Effects on Microwave Propagation over the Sea				5a. CONTRACT NUMBER	
				5b. GRANT NUMBER	
				5c. PROGRAM ELEMENT NUMBER	
6. AUTHOR(S)				5d. PROJECT NUMBER	
				5e. TASK NUMBER	
				5f. WORK UNIT NUMBER	
7. PERFORMING ORGANIZATION NAME(S) AND ADDRESS(ES) SPAWARSYSCEN San Diego 2858,,49170 Propagation Path,,San Diego,,CA,92152				8. PERFORMING ORGANIZATION REPORT NUMBER	
9. SPONSORING/MONITORING AGENCY NAME(S) AND ADDRESS(ES)				10. SPONSOR/MONITOR'S ACRONYM(S)	
				11. SPONSOR/MONITOR'S REPORT NUMBER(S)	
12. DISTRIBUTION/AVAILABILITY STATEMENT Approved for public release; distribution unlimited					
13. SUPPLEMENTARY NOTES					
14. ABSTRACT The long-terms goals of the research are to understand the effects of marine boundary layer atmospheric mean and turbulence structures on the propagation of microwave signals over the ocean. For wind speeds greater than 10 m s-1, it has been hypothesized that ocean surface waves distort the vertical refractivity profile leading to reduced microwave signal levels. Previous at-sea experiments have shown resonant effects of waves on the momentum flux and turbulence at wind-wave and swell scales. Current research focuses on wave effects on the scalars, temperature and humidity, that affect propagation.					
15. SUBJECT TERMS					
16. SECURITY CLASSIFICATION OF:			17. LIMITATION OF ABSTRACT	18. NUMBER OF PAGES	19a. NAME OF RESPONSIBLE PERSON
a. REPORT unclassified	b. ABSTRACT unclassified	c. THIS PAGE unclassified			

mean and flux meteorological buoy that was located mid way between R/P FLIP and the EO receiver site. The CIRPAS Twin Otter aircraft also participated in RED.

WORK COMPLETED

A mission plan was executed for the RED experiment, 20 August to 18 September 2001. In February 2002, we held a first-look data-analysis workshop at Scripps Institution of Oceanography, La Jolla, CA, where we had 17 presentations covering all of the major aspects of the RED experiment. In February 2003, we held the second data-analysis workshop at the University of California, Irvine. This workshop immediately followed a special session on the RED experiment that was held during the 83rd Annual Meeting of the American Meteorological Society. The Rough Surface Effects on Microwave Propagation over the Sea project is complete at the end of FY 03.

RESULTS

Figure 1 shows the excellent agreement between modeled results, derived from in situ meteorology, and the measured signal strength (shown as propagation loss) for the X-band (9600 MHz) transmitters. The data (black dots) show that the evaporation duct (the vertical refractive profile) enhances the received signal levels by two to four orders of magnitude (100 to 10000) times the levels expected in a standard or normal atmosphere, which is shown as the dashed line labeled *troposcatter*. The mean error is -0.17 dB for the high-sited antenna and 4.27 dB for the low-sited antenna.

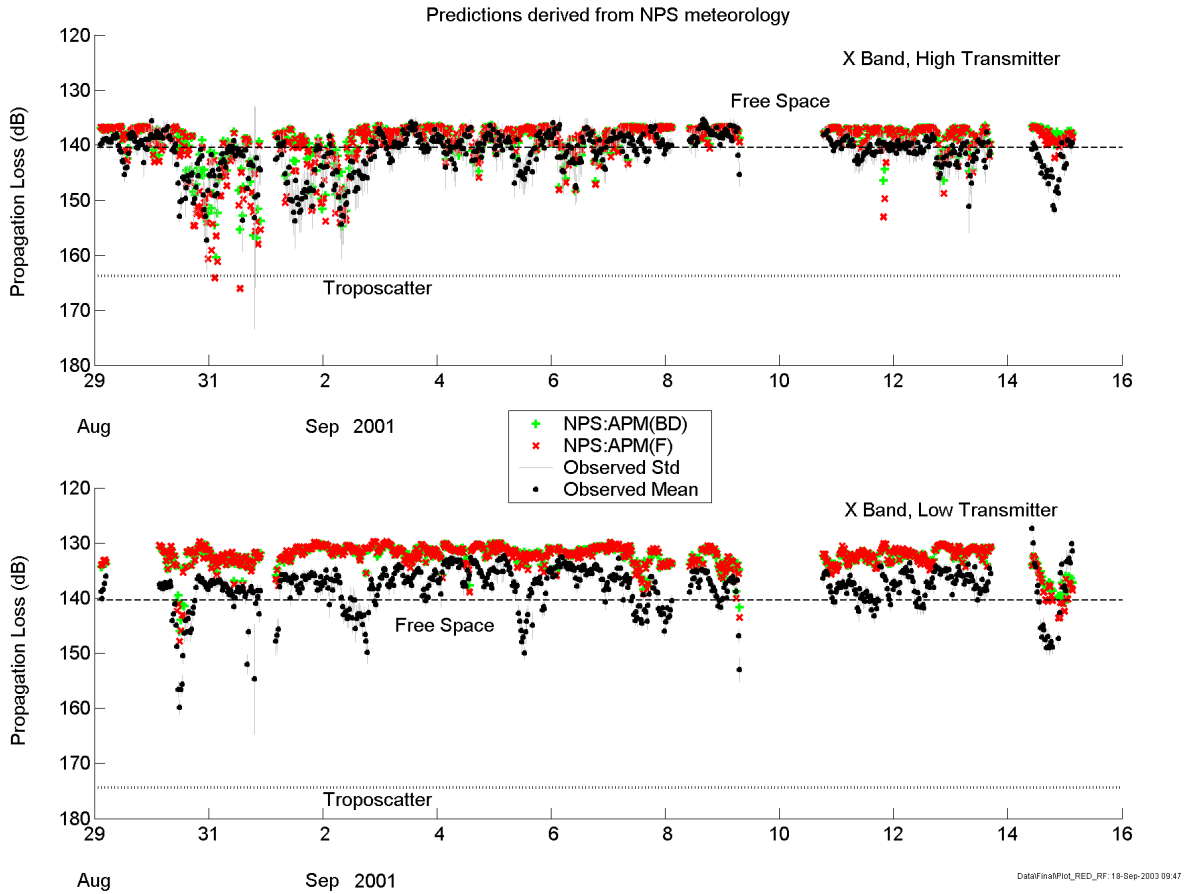


Figure 1. A comparison of predicted (red and green symbols) to measured signal levels at X-band (9600 MHz).

During the RED experiment, we did not get the high winds and high evaporation duct heights that we had anticipated. There was only one Eastern Pacific tropical cyclone that developed but it had minimal impact on the sea-state in Hawaii. However, comparison of 5 minute averaged observed-to-modeled propagation data for all 6 sets of transmitters are very good. In the generation of the modeled propagation data we used meteorological and surface inputs from the NPS buoy, which was located approximately 5 km westward (downwind) from R/P FLIP, and inputs derived from the UCI vertical array on R/P FLIP. Both of these data sets were used to drive the NPS “bulk model” that generated the refractive profiles needed by the Advanced Propagation Model (APM) to generate the modeled propagation data. The comparisons of observed-to-modeled propagation data are statistically better using meteorological inputs from the UCI array than using inputs from the NPS buoy. In addition, the NPS bulk model was modified to use both the standard Businger-Dyer profile functions of T and Q and a new form of the functions suggested by C. Friehe that were derived from UCI vertical array sensors during the RED experiment. Statistically, there is a slight improvement in the comparisons of modeled-to-observed propagation data using the new profile functions. However, additional work is needed to confirm the new profile functions and to understand their effects on microwave propagation over the sea.

IMPACT/APPLICATIONS

The impact of this research is the improvement of the basic understanding of temperature and humidity fluctuation and mean profiles in the atmospheric surface layer over the ocean. These scalars affect the vertical refractivity profile and therefore strongly affect microwave signal transmission over the sea. These results are readily incorporated into propagation models, such as APM. In addition, the data obtained will aid our understanding of wind-wave interaction.

TRANSITIONS

This work directly supports the ONR sponsored SSC SD Advanced Propagation Model (APM). APM Version 1.3.1 was transitioned into the Tactical EM/EO Propagation Models Project (PE 0603207N) under PMW 155, which has produced the Advanced Refractive Effects Prediction System (AREPS).

RELATED PROJECTS

This project is closely related to the ONR sponsored Coastal Boundary Layer Air-Sea Transfer project.

SUMMARY

The highlights of the RED experiment are:

- RED RF data analysis confirms that Monin-Obukhov Similarity Theory combined with a high-fidelity propagation model is a very good predictor of RF propagation in a homogeneous unstable marine boundary layer.
- RF, EO, and meteorological data collected during RED provide a high-quality benchmark data set that will be useful for validation of new models (*e.g.*, a periodic refractivity profile in both range and height).
- RED confirmed observations made during the 1996 MBL experiment that height variations in scalars (air temperature, humidity, etc.) are related to sea waves and supports Miles' critical layer theory.
- RED provided the first direct evidence that the specific humidity profile function over the sea is not equivalent to the heat profile function (results from CBLAST may confirm this observation).

PUBLICATIONS

Anderson K., B. Brooks, P. Caffrey, A. Clarke, L. Cohen, K. Crahan, K. Davidson, A. De Jong, G. De Leeuw, D. Dion, S. Doss-Hammel, P. Frederickson, C. Friehe, T. Hristov, D. Khelif, M. Moerman, J. Reid, S. Reising, M. Smith, E. Terrill, and D. Tsintikidis, 2004: The Rough Evaporation Duct (RED) Experiment: An Assessment of Boundary Layer Effects in a Trade Winds Regime on Microwave and Infrared Propagation over the Sea, *BAMS* [refereed]

Anderson K., S. Doss-Hammel, P. Frederickson, 2003: Microwave and Infrared Propagation over the Sea during the Rough Evaporation Duct (RED) Experiment, *MilCom 2003*, 13-16 Oct., Boston, MA [in publishing, refereed]

- Anderson K., S. Doss-Hammel, P. Paulus, 2003: The Rough Evaporation Duct (RED) Experiment: Microwave and electro-optical transmission experiments in the air-sea boundary layer, *SSC SD Biennial Review* [in publishing, refereed]
- Anderson, K, 2002: Microwave and electro-optical transmission experiments in the air-sea boundary layer, Fall *AGU Meeting*, 6-10 December 2002, San Francisco, CA
- Anderson, K, P. Frederickson, E. Terrill, 2003: Air-Sea Interaction Effects on Microwave Propagation over the Sea during The Rough Evaporation Duct (RED) Experiment, *AMS Proceedings 12th Conference on Interactions of the Sea and Atmosphere*, Long Beach, CA.
- Clarke, A., V. Kapustin, S. Howell, and K. Moore, 2003: The contribution of coastal aerosol from breaking waves to visible and IR light-extinction over a 10km optical path during RED, *AMS Proceedings 12th Conference on Interactions of the Sea and Atmosphere*, Long Beach, CA.
- Crahan, K.K., D. Hegg, D. Covert, and H. Johnson, 2003: Speciation of aerosol organics and their relationship to light-scattering during RED, *AMS Proceedings 12th Conference on Interactions of the Sea and Atmosphere*, Long Beach, CA.
- De Leeuw, G., M. Moerman, L. Cohen, B. Brooks, M. Smith and E. Vignati, 2003: Aerosols, bubbles and sea spray production studies during the RED experiment, *AMS Proceedings 12th Conference on Interactions of the Sea and Atmosphere*, Long Beach, CA.
- Frederickson, P., K. Davidson, K. Anderson, S. Doss-Hammel, and D. Tsintikidis, 2003: Air-sea interaction processes observed from buoy and propagation measurements during the RED experiment, *AMS Proceedings 12th Conference on Interactions of the Sea and Atmosphere*, Long Beach, CA.
- Friehe, C.A., and T. Hristov, 2003: Scalar flux-profile relations over the open ocean, *AMS Proceedings 12th Conference on Interactions of the Sea and Atmosphere*, Long Beach, CA.
- Hristov, T., C. Friehe, 2003: EM Propagation over the ocean: Analysis of RED experiment data, *AMS Proceedings 12th Conference on Interactions of the Sea and Atmosphere*, Long Beach, CA.
- Nilsson, E.D., M. Mårtensson, S. van Ekeren, G. de Leeuw, M. Moerman, C. O'Dowd, R. Flanagan, and M. Geever, 2003: Eddy correlation measurements of the primary marine aerosol source, *AMS Proceedings 12th Conference on Interactions of the Sea and Atmosphere*, Long Beach, CA.
- Tsintikidis, D., S. Doss-Hammel, P. Frederickson, and K. Davidson, 2003: Infrared propagation in the marine atmospheric surface layer: Extinction and refraction, *AMS Proceedings 12th Conference on Interactions of the Sea and Atmosphere*, Long Beach, CA