

Modeling Of Selected Continental Slope Processes

Lincoln F. Pratson
Division of Earth and Ocean Sciences
Duke University
Durham, NC 27708-0230
phone: (919) 681-8077 fax: (919) 684-5833 e-mail: pratson@eos.duke.edu
Award No.: N00014-99-0044
<http://www.geo.duke.edu/faculty/pratson.htm>

LONG-TERM GOALS

My long-term goals are to improve our understanding of the physical evolution of continental slope morphology and stratigraphy, and enhance our ability to extract stratigraphic information from geophysical data.

OBJECTIVES

The objectives of this project are to:

- (1) Characterize the effect of spatial variations in deposition and erosion on the fluid flow, pore pressures and thus the stability of continental slope sediments.
- (2) Constrain the impact of individual turbidity currents on seafloor evolution.
- (3) Develop a technique for correlating stratigraphy complicated by spatial variations in sedimentation, erosion and post-depositional processes.
- (4) Assess the fidelity to which various seismic sources image stratigraphy.

APPROACH

I am exploring the linkages between sedimentation/erosion, fluid flow, pore-pressure evolution and slope stability with M. Tice (Stanford) using numerical modeling. I am also using numerical modeling in collaboration with J. Imran (U. S. Caro.), G. Parker (U. Minn.) and J. Syvitski (U. Colo.) to simulate the dynamics of turbidity currents and their role in seafloor evolution. Correlation of any two series of down-core measurements of stratigraphy (e.g., lithology, physical properties or log response) is being done with D. Martinson (L-DEO) and is being automated on the basis of variations in measurement amplitude. And I am investigating the stratigraphic content of seismic reflection data with W. Gouveia (Mobil), C. Paola (U. Minn.) and D. Herrick (Duke) by simulating seismograms of experimental stratigraphy formed in a new laboratory basin at St. Anthony Falls Laboratory (Univ. Minn.).

WORK COMPLETED

- (1) A 2D finite-element model has been developed that solves for the evolution of both stresses and hydraulic head in a slope composed of saturated sediments (Figure 1). The model builds on the 2D analytical model of slope stability by Mello and Pratson (1999).

Report Documentation Page

Form Approved
OMB No. 0704-0188

Public reporting burden for the collection of information is estimated to average 1 hour per response, including the time for reviewing instructions, searching existing data sources, gathering and maintaining the data needed, and completing and reviewing the collection of information. Send comments regarding this burden estimate or any other aspect of this collection of information, including suggestions for reducing this burden, to Washington Headquarters Services, Directorate for Information Operations and Reports, 1215 Jefferson Davis Highway, Suite 1204, Arlington VA 22202-4302. Respondents should be aware that notwithstanding any other provision of law, no person shall be subject to a penalty for failing to comply with a collection of information if it does not display a currently valid OMB control number.

1. REPORT DATE 30 SEP 1999		2. REPORT TYPE		3. DATES COVERED 00-00-1999 to 00-00-1999	
4. TITLE AND SUBTITLE Modeling Of Selected Continental Slope Processes				5a. CONTRACT NUMBER	
				5b. GRANT NUMBER	
				5c. PROGRAM ELEMENT NUMBER	
6. AUTHOR(S)				5d. PROJECT NUMBER	
				5e. TASK NUMBER	
				5f. WORK UNIT NUMBER	
7. PERFORMING ORGANIZATION NAME(S) AND ADDRESS(ES) Duke University ,Division of Earth and Ocean Sciences,Durham,NC,27708-0230				8. PERFORMING ORGANIZATION REPORT NUMBER	
9. SPONSORING/MONITORING AGENCY NAME(S) AND ADDRESS(ES)				10. SPONSOR/MONITOR'S ACRONYM(S)	
				11. SPONSOR/MONITOR'S REPORT NUMBER(S)	
12. DISTRIBUTION/AVAILABILITY STATEMENT Approved for public release; distribution unlimited					
13. SUPPLEMENTARY NOTES					
14. ABSTRACT					
15. SUBJECT TERMS					
16. SECURITY CLASSIFICATION OF:			17. LIMITATION OF ABSTRACT	18. NUMBER OF PAGES	19a. NAME OF RESPONSIBLE PERSON
a. REPORT unclassified	b. ABSTRACT unclassified	c. THIS PAGE unclassified			

- (2) A 1D numerical model of turbidity current dynamics has been developed (Pratson et al., in press (a)) and compared to a similar model of debris flow dynamics (Pratson et al., in press (b)). These 1D models have now been extended to 2D, though the latter versions are still being refined.
- (3) A model has also been developed for simulating sediment physical properties from digital photographs of experimental stratigraphy (Pratson et al., 1998a, 1998b; Pratson et al., 1999; Pratson and Gouveia, in review). This simulation is then input to algorithms that generate synthetic seismic data ranging from idealistic, vertical-incident seismograms to realistic 2D multichannel seismic data. The physical-property model is being improved (Herrick et al., in press) and now yields synthetic core data (Figure 2), which will be used to test the correlation algorithm.

RESULTS

- (1) The 2D finite-element model reproduces the steady-state solution for fluid flow in a saturated slope as presented by Iverson and Reid (1992) (Figure 1). This confirms that the model works and is ready to be exercised on transient problems related to non-uniform sedimentation/erosion on seafloor slopes.
- (2) The modeling comparison of debris flows versus turbidity currents demonstrates that the tendency of debris flows to conserve their mass relative to turbidity currents, which change theirs through erosion/deposition and the entrainment of ambient water, leads to fundamental differences in the distributions, shapes and stacking of their deposits.
- (3) The modeling of synthetic seismograms from experimental stratigraphy illustrates the filtering effect of different seismic sources on stratigraphic resolution. It also shows that seismic artifacts such as diffractions, multiples and side echoes introduce lower frequencies into seismic data that mask important stratal geometries used to interpret the data.

IMPACT/APPLICATIONS

With further use, the 2D finite element model coupling stress and hydraulic head should improve our understanding of fluid flow within passive continental slopes and its potential role in slope destabilization. The numerical modeling of turbidity current dynamics is presenting new ideas on how an important marine process forms seafloor morphology and stratigraphy, a central goal of STRATAFORM. And the synthetic seismic modeling of experimental stratigraphy is offering a novel approach for constraining what is and isn't retained of stratigraphy in seismic reflection data.

TRANSITIONS

The 1-D turbidity current model has been incorporated into the 2D basin evolution model, SEDFLUX, which is being developed by James Syvitski (Univ. Colorado) and other STRATAFORM researchers. The model is also being tested by a number of oil companies (e.g., Mobil, Texaco, Exxon, and Shell). Additionally, several of these companies are using the synthetic seismic modeling of the experimental stratigraphy for teaching and research purposes.

RELATED PROJECTS

Over the past year, I've aided in two regional to global-scale quantitative analyses involving continental slope morphologies: (i) an analysis of the shapes of continental margins around the world

(O'Grady et al., in review), and (ii) an analysis of the shapes, sizes and distributions of seafloor failures along the US margins (McAdoo et al., in review). I am also involved in an analysis of the relation between the dynamics of internal waves and the gradients of the continental slopes within the STRATAFORM study areas (Cacchione et al., in review).

REFERENCES

- Cacchione, D., Pratson, L., and Ogston, A., in review (abs.). Internal Tides, Sedimentation, and Seafloor Slopes: *AGU*, 2000 OSLO convention.
- Herrick, D., Gouveia, W., and L.F. Pratson, in review (abs.). Building a lithology-based elastic model from digitized photographs of stratigraphy: AAPG 2000 annual convention
- Iverson, R.M., and Reid, M.E., 1992. Gravity-driven groundwater flow and slope failure potential; 1. Elastic effective-stress model: *Water Resources Research*, v. 28, p. 925-938.
- McAdoo, B., Pratson, L., and Orange, D., in review. Submarine landslide geomorphology, US Continental Slope: *Marine Geology*.
- Mello, U., and L.F. Pratson, 1999. Regional slope stability and slope failure mechanics from the two-dimensional state of stress in a semi-infinite slope: *Marine Geology*, v. 154, p. 339-356.
- O'Grady, D., Syvitski, J., Pratson, L.F., and Sarg, J.F., in review. Categorizing the morphologic variability of siliciclastic passive continental margins: *Geology*.
- Pratson, L.F., J. Imran, E. Hutton, G. Parker and J. Syvitski, in press (a). BANG1D: A one-dimensional Lagrangian model of turbidity current mechanics: *Computers & Geosciences*.
- Pratson, L.F., J. Imran, G. Parker, J. Syvitski and E. Hutton, in press (b). Debris flows versus turbidity currents: a modeling comparison of their dynamics and deposits, in Bouma et al. (eds), *Turbidites: AAPG/SEG* special publication.
- Pratson, L., Gouveia, W., Courtney, R., Syvitski, J.P., Paola, C., and Parker, G., 1998 (a) (abs.). Constraining the stratigraphic information content of seismic data. *SEPM-IAS* Research Conference: "Strata and Sequences on Shelves and Slopes, Sept. 15-19, Sicily, Italy.
- Pratson, L., Gouveia, W., Courtney, R., Syvitski, J.P., Paola, C., and Parker, G., 1998 (b) (abs.). Constraining the stratigraphic information in seismic reflection data: *AGU* 1998 Fall meeting EOS suppliment, v. 79(45), p. F468.
- Pratson, L., Herrick, D., Gouveia, W., and Sarg, J.F., 1999 (abs.). Seismic modeling of experimental stratigraphy: 6th International Congress of the Brazilian Geophysical Society 15-19 August, 1999, Rio de Janeiro, Brazil
- Pratson, L., and Gouveia, W., in review. Linking stratigraphic and seismic modeling: *AAPG Bulletin*.

FY99 PUBLICATIONS

Cacchione, D., Pratson, L., and Ogston, A., in review (abs.). Internal Tides, Sedimentation, and Seafloor Slopes: *AGU*, 2000 OSLO convention.

Herrick, D., Gouveia, W., and L.F. Pratson, in review (abs.). Building a lithology-based elastic model from digitized photographs of stratigraphy: AAPG 2000 annual convention

McAdoo, B., Pratson, L., and Orange, D., in review. Submarine landslide geomorphology, US Continental Slope: *Marine Geology*.

Mello, U., and L.F. Pratson, 1999. Regional slope stability and slope failure mechanics from the two-dimensional state of stress in a semi-infinite slope: *Marine Geology*, v. 154, p. 339-356.

O'Grady, D., Syvitski, J., Pratson, L.F., and Sarg, J.F., in review. Categorizing the morphologic variability of siliciclastic passive continental margins: *Geology*.

Pratson, L.F., J. Imran, E. Hutton, G. Parker and J. Syvitski, in press (a). BANG1D: A one-dimensional Lagrangian model of turbidity current mechanics: *Computers & Geosciences*.

Pratson, L.F., J. Imran, G. Parker, J. Syvitski and E. Hutton, in press (b). Debris flows versus turbidity currents: a modeling comparison of their dynamics and deposits, in Bouma et al. (eds), *Turbidites: AAPG/SEG special publication*.

Pratson, L., Gouveia, W., Courtney, R., Syvitski, J.P., Paola, C., and Parker, G., 1998 (a) (abs.). Constraining the stratigraphic information content of seismic data. *SEPM-IAS Research Conference: "Strata and Sequences on Shelves and Slopes*, Sept. 15-19, Sicily, Italy.

Pratson, L., Gouveia, W., Courtney, R., Syvitski, J.P., Paola, C., and Parker, G., 1998 (b) (abs.). Constraining the stratigraphic information in seismic reflection data: *AGU 1998 Fall meeting EOS supplement*, v. 79(45), p. F468.

Pratson, L., Herrick, D., Gouveia, W., and Sarg, J.F., 1999 (abs.). Seismic modeling of experimental stratigraphy: 6th International Congress of the Brazilian Geophysical Society 15-19 August, 1999, Rio de Janeiro, Brazil

Pratson, L., and Gouveia, W., in review. Linking stratigraphic and seismic modeling: *AAPG Bulletin*.
Pratson, L.F., J. Imran, E. Hutton, G. Parker and J. Syvitski, in review. Debris flows versus turbidity currents: a modeling comparison of their dynamics and deposits, in Bouma et al. (eds), *Turbidites: AAPG/SEG special volume*.

Syvitski, J.P.M., Pratson, L. O'Grady, D., 1999. Stratigraphic Predictions of Continental Margins for the Navy. In: L. Whatney et al (eds.) *Numerical Experiments in Stratigraphy*. SEPM Special Publication No. 62, p. 219-236.

Syvitski, J.P., Hutton, E., and Pratson, L., 1999 (abs.). Numerical simulation of debris flows and turbidity currents with longterm feedback from evolving boundary conditions: *AGU 1998 Fall meeting EOS suppliment*, v. 79(45), p. F330.

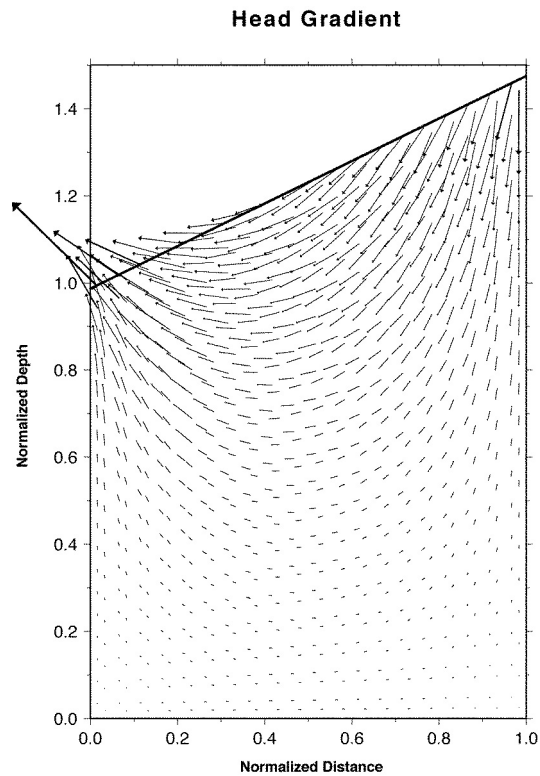


Figure 1. *Steady-state head gradient within a subaerial slope of saturated sediments dipping 30° . This result agrees with the solution of Iverson and Reid (1992), verifying that the 2D model coupling the evolution of stresses and fluid flow within a sedimented slope is working.*

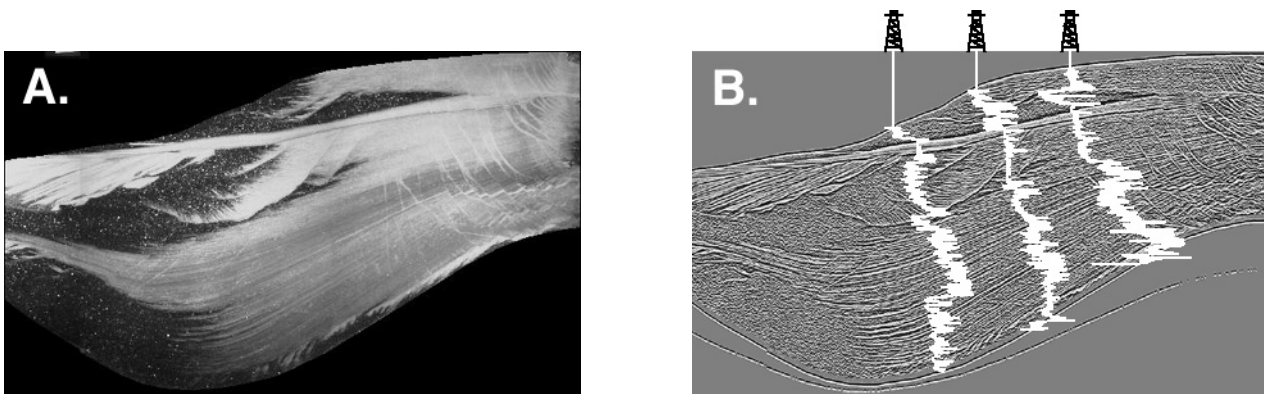


Figure 2. *A. Digital photograph of experimental stratigraphy formed in the XS Basin at St. Anthony Falls Laboratory (Univ. Minn.). B. Idealistic, vertical-incident seismogram of stratigraphy (peak frequency = 400 Hz) overlain by three simulated well logs.*