

2004-27

## FINDING OF NO SIGNIFICANT IMPACT

**1.0 NAME OF ACTION:** Construction of School Age Program Facility at Davis-Monthan Air Force Base (DMAFB), Arizona.

**2.0 DESCRIPTION OF PROPOSED ACTION AND ALTERNATIVES:** The 355 CES, through a private construction contractor, will construct a new facility on Quijota Blvd. to serve as activity space, additional office space, restrooms, and hallways for training at DMAFB. The addition will consist of approximately 15,500 square feet with an additional 5,000 square feet of land to be covered by an addition to an existing parking lot. Under the preferred option, construction would be on a vacant area immediately northwest of existing Bldg. 6000. Under Alternate Option One, an addition totaling approximately 15,500 square feet would be constructed as an addition to the west side of existing Bldg. 6000, occupying an area now a parking lot. Under Alternate Option Two, construction of an addition would be on an area now a playground north of Bldg. 6000 and would also occupy approximately 15,500 square feet.

**3.0 SUMMARY OF ANTICIPATED ENVIRONMENTAL IMPACTS:** Implementing the proposed action at the preferred option would have the following impacts on the local environment:

**3.1 Land Use.** The facility will cover an approximately 15,500 square feet of undeveloped lands with an additional 5,000 square feet of area added to an existing parking lot.

**3.2 Air Quality.** The action will have a limited impact on air quality as construction equipment is used.

**3.3 Health and Safety.** The availability of the additional activity, storage, and office space will remedy an identified shortfall of space for after school activities as identified in official inspections. The additional space will allow activities for younger children to be isolated from those of teenagers, which are ongoing in the existing Youth Center. However, construction presents some risk of injuries.

**3.4 Geology and Soils.** The proposed action will cover areas now covered by asphalt and gravels with some landscaping.

**3.5 Water.** The proposed action will have no impact on groundwater or surface water resources.

**3.6 Solid Waste.** Construction will generate some solid waste from building materials, but these will be removed and deposited in landfills or recycled.

**3.7 Cultural Resources.** The proposed action will have no impact on cultural resources.

# Report Documentation Page

*Form Approved*  
*OMB No. 0704-0188*

Public reporting burden for the collection of information is estimated to average 1 hour per response, including the time for reviewing instructions, searching existing data sources, gathering and maintaining the data needed, and completing and reviewing the collection of information. Send comments regarding this burden estimate or any other aspect of this collection of information, including suggestions for reducing this burden, to Washington Headquarters Services, Directorate for Information Operations and Reports, 1215 Jefferson Davis Highway, Suite 1204, Arlington VA 22202-4302. Respondents should be aware that notwithstanding any other provision of law, no person shall be subject to a penalty for failing to comply with a collection of information if it does not display a currently valid OMB control number.

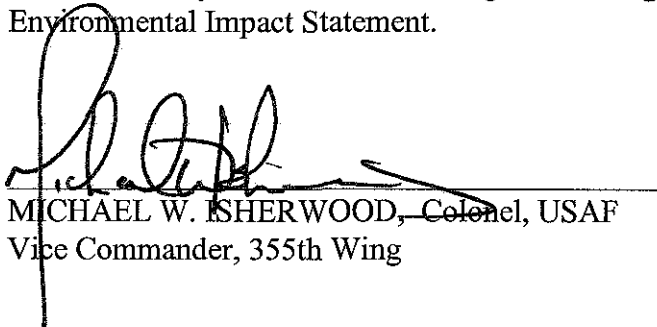
1. REPORT DATE <b>26 SEP 2004</b>	2. REPORT TYPE	3. DATES COVERED <b>00-00-2004 to 00-00-2004</b>			
4. TITLE AND SUBTITLE <b>Environmental Assessment for Construction of School Age Program Facility 355th Civil Engineer Squadron Davis-Monthan</b>		5a. CONTRACT NUMBER			
		5b. GRANT NUMBER			
		5c. PROGRAM ELEMENT NUMBER			
6. AUTHOR(S)		5d. PROJECT NUMBER			
		5e. TASK NUMBER			
		5f. WORK UNIT NUMBER			
7. PERFORMING ORGANIZATION NAME(S) AND ADDRESS(ES) <b>355th Civil Engineer Squadron (CES/CEVA),710 Third Street,Davis-Monthan AFB,AZ,85707</b>		8. PERFORMING ORGANIZATION REPORT NUMBER			
9. SPONSORING/MONITORING AGENCY NAME(S) AND ADDRESS(ES)		10. SPONSOR/MONITOR'S ACRONYM(S)			
		11. SPONSOR/MONITOR'S REPORT NUMBER(S)			
12. DISTRIBUTION/AVAILABILITY STATEMENT <b>Approved for public release; distribution unlimited</b>					
13. SUPPLEMENTARY NOTES					
14. ABSTRACT					
15. SUBJECT TERMS					
16. SECURITY CLASSIFICATION OF:			17. LIMITATION OF ABSTRACT	18. NUMBER OF PAGES	19a. NAME OF RESPONSIBLE PERSON
a. REPORT <b>unclassified</b>	b. ABSTRACT <b>unclassified</b>	c. THIS PAGE <b>unclassified</b>	<b>Same as Report (SAR)</b>	<b>25</b>	

**3.8 Biological Resources.** Several Saguaro Cacti and at least two Barrel Cacti would be relocated, as required by law. Several ornamental Palo Verde trees and several Yucca plants would be removed.

**3.9 Social, Economic, and Quality of Life.** The facility, painted in earth tone colors matching surroundings, will improve after school programs at DMAFB. No additional demand for housing, schools, or support services would occur.

**4.0 CONCLUSION:**

Based on the findings of the Environmental Assessment titled "Construction of School Age Program Facility at Davis-Monthan Air Force Base (DMAFB), Arizona" for the 355th Civil Engineering Squadron, Davis-Monthan Air Force Base, Arizona" (2004), and adherence to standard operating procedures with regard to site preparation and construction, operation, and maintenance, no significant impacts are expected from the proposed action. No negative cumulative impacts are identified with this project as associated with any other nearby activities. An issuance of a Finding of No Significant Impact is thus warranted. This action does not constitute a major federal action of significant magnitude to warrant preparation of an Environmental Impact Statement.



MICHAEL W. ISHERWOOD, Colonel, USAF  
Vice Commander, 355th Wing

28 Oct 04  
Date

ENVIRONMENTAL ASSESSMENT  
FOR  
CONSTRUCTION OF SCHOOL AGE  
PROGRAM FACILITY  
355TH CIVIL ENGINEER SQUADRON  
DAVIS-MONTHAN AFB

26 September 2004  
C.W. Miller, Ph.D.

## SUMMARY OF CONTENTS BY SECTION

1.0 Outlines the purpose and need for the action and the process used to identify relevant environmental issues.

2.0 Provides a description of the proposed action and alternatives identified as well as provides a comparative summary table regarding the effects of each alternative on the environment.

3.0 Describes the affected environment under baseline conditions, providing a basis for analyzing the impacts of alternatives.

4.0 Discusses the results of the environmental analysis (summary in section 2.2 derives from this).

Appendix A includes maps of the general locale of the project within Davis-Monthan Air Force Base (DMAFB) and more detailed maps of the particular project, including the preferred and alternative locations.

Appendix B includes project approval and coordination for undertaking the project and other items of importance for coordination of the effort among various entities.

## ENVIRONMENTAL ASSESSMENT

### 1.0 PURPOSE OF AND NEED FOR ACTION

The National Environmental Policy Act of 1969 (NEPA) requires preparation of an Environmental Assessment (EA) by the responsible federal agency for certain projects. The Council of Economic Quality (CEQ) mandates details of the preparation of this EA. The project under consideration is of sufficient magnitude to require an EA. The 355th Civil Engineer Squadron (355 CES) proposes construction of a new facility on Quijota Blvd., approximately 250 feet northwest of the existing Youth Center. The new facility would provide some 15,500 square feet of classroom, activity, and office space to allow dependent children to participate in after school programs. The new activity space will supplement existing space and improve efficiency in maintaining existing programs while allowing organization of new activities. Further, the addition would improve mission efficiency by allowing consolidation in one building of several functions currently ongoing at different locations. The 355 CES has designated a preferred alternative for the separate new facility of 15,500 square feet, based on the utility of consolidating functions in one building. In addition, approximately 5,000 square feet of additional parking space would be constructed. However, the 355 CES has also designated two Alternatives as additions to existing Bldg. 6000, the Youth Center. Alternative Option One is identified as an addition to existing Bldg. 6000 of approximately 15,500 square feet, but attached to the east side. Alternative Option Two is designated as an addition of approximately 15,500 square feet on the north side of existing Bldg. 6000. The 355 WG/PA will announce the availability of the EA for public review, probably with an item in *The Desert Airman* and possibly other sources. (A Finding of No Significant Impact dated 3 October 1997 which was based on an Environmental Assessment of 26 September 1997 addressed additions to the existing Youth Center. However, this document is required since the plans have changed to construct an entirely new building.)

### 1.1 PURPOSE AND NEED

The existing Youth Center has been used for a wide range of activities by dependents in age groups from kindergarten through high school. A space deficiency of approximately 4,500 square feet has been identified. In addition, construction of a new facility would allow activities of various age groups to be more controlled in separate locations. (Hence the preferred alternative is identified as compared to Alternate Options One or Two or other approaches.)

### 1.2 DECISIONS TO BE MADE

The Chairman of the Environmental Protection Committee, DMAFB, will make a decision based on review of this Environmental Assessment (EA). The decision will

be to issue a Finding of No Significant Impact (FONSI) or to require preparation of an Environmental Impact Statement (EIS) prior to approval of this project, or to disapprove the project.

The preferred alternative location for the new facility is identified on the map in Appendix A which will occupy a vacant space totaling approximately 15,500 square feet north of Quijota Blvd. approximately 250 feet northwest of the existing Youth Center, Bldg. 6000. Further, the existing parking lot on the west side of Bldg. 6000 would be expanded toward the new facility to cover an additional 5,000 square feet.

However, two other alternatives are also shown. Under Alternate Option One, an addition to the existing Youth Center, Bldg. 6000, of approximately 15,500 square feet would cover most of the existing facility's parking lot on the west side. Under Alternate Option Two, an addition to the existing Youth center of approximately 15,500 square feet would be added to the north side but would require removal of some playground equipment.

Finally, a "no action" alternative will be considered. A final executive decision will ultimately be made selecting one of these for actual construction of the proposed project; the designation of a preferred location represents a tentative decision that is already on record. However, a final decision between the preferred alternative and Alternate Option One or Alternate Option Two will be made at DMAFB.

### 1.3 LOCATION OF PROPOSED ACTION

The preferred alternative and Alternate Options One and Two for the addition of space to supplement Bldg. 6000 are in the north central area of DMAFB, in a portion of the base primarily set aside for residential housing personnel support. The address of existing Bldg. 6000 is 5915 E. Quijota Blvd., Davis-Monthan AFB AZ 85707. Maps in Appendix A show the preferred alternative and both Alternative Option One and Two.

### 1.4 SCOPING AND ENVIRONMENTAL ISSUES

#### 1.4.1 SCOPING PROCESS

An environmental issue is defined as the effect of an unresolved conflict for physical, biological, social, or economic resources. An interdisciplinary team identified a range of environmental issues potentially relevant to the decision to be made. The team examined these issues and eliminated the non-relevant items from detailed study while analyzing all relevant environmental issues in detail for potential environmental impacts.

#### 1.4.2 RELEVANT ENVIRONMENTAL ISSUES

The team identified the following issues to be applicable to this particular project: air quality, land use, soils, health and safety, solid waste, biological resources, and quality of life (including visual and noise).

#### 1.4.3 NON-RELEVANT ENVIRONMENTAL ISSUES

The team considered other environmental issues, but determined that they were associated with factors having limited or no impact in this particular case.

The planned construction will have no effect on geology.

No Environmental Restoration Program (ERP) sites are in the area.

The planned construction will have no impact on water quality since the proposed activities have little or no potential for disturbance in areas related to surface water drainage or recharge of groundwater aquifers.

No prehistoric sites are known in the area. No buildings or other sites of historic significance more than 50 years old (hence eligible for the National Register of Historic Places), are present. (Bldg. 6000 dates from 1988, but has been modified several times.)

#### 1.5 PERMITS, LICENSES, AND ENTITLEMENTS

A Pima County Air Quality Permit is required for ground disturbances during construction. The Arizona Native Plant Law requires a permit before certain species may be relocated.

### 2.0 ALTERNATIVES INCLUDING THE PROPOSED ACTION AND NO ACTION

#### 2.1 PREFERRED ACTION

Under the preferred alternative, the new facility with additional parking space as shown on the map in Appendix A would be constructed. The building, in a general "L" shape but somewhat irregular, would be approximately 15,500 square feet, with approximately 5,000 square feet added to an existing parking lot between the new facility and existing Bldg. 6000 to the east. The new facility would include activity space, storage space for various athletic equipment, office space, a conference room and restrooms. The site is currently unoccupied but covered by desert landscaping and includes several Saguaro and Barrel cacti, Yucca plants, and Palo Verde trees. The facility would include fire protection, electrical, communication, and other utility connections.

##### 2.1.1 NO ACTION

Under the No Action alternative, the 355 CES would not construct the new facility supplementing Bldg. 6000. Without the new additions, the lack of sufficient activity space, the identified deficiency in after school activities would continue.

### 2.1.2 DESCRIPTION OF ALTERNATIVES

Under Alternate Option One, an addition of approximately 15,500 square feet would cover most of the existing parking area just west of existing Bldg. 6000 and would provide all the additional space.

Under Alternate option Two, an addition of approximately 15,500 square feet would cover the area now occupied by a fenced playground immediately north of existing Bldg. 6000. Fencing and playground equipment would be removed.

Maps in Appendix A show all the Alternatives for the additions.

### 2.2 SUMMARY OF ENVIRONMENTAL IMPACTS

#### Comparative Matrix

<b>RELEVANT ISSUES</b>	<b>NO ACTION</b>	<b>PREFERRED ALTERNATIVE (New FACILITY)</b>	<b>ALTERNATE OPTIONS ONE and TWO (Additions to Bldg. 6000)</b>
<b>LAND USE</b>	Site remains covered with gravel and desert landscaping.	New facility occupies 15,500 square feet and existing parking lot is expanded by 5,000 square feet. Landscaping in unoccupied area would be removed.	Addition of 15,500 square feet is made to existing Bldg. 6000. Option One would occupy much of an existing parking lot but Option Two would cover land now a fenced playground and would require removal of playground equipment and several major utility lines
<b>AIR QUALITY</b>	No increase in air emissions.	Short-term increases in carbon monoxide, particulate, and nitrogen oxide emissions.	Short-term increases in carbon monoxide, particulate, and nitrogen oxide emissions.
<b>SOILS</b>	Area remains gravel covered with some landscaping.	After construction, soils covered by new facility of 15,500 square feet and parking lot addition of 5,000 square feet.	No impact at Option One which would cover an area already asphalt covered. Option Two would cover a playground which consists of exposed soils and is gravel covered.

<b>SOLID WASTE</b>	No increase in current volumes.	Waste generated, collected, and disposed off base by contractor in local municipal/county-approved or contractor operated landfill.	Waste generated, collected, and disposed off base by contractor in local municipal/county-approved or contractor operated landfill.
<b>SOCIO-ECONOMIC</b>	No change from present conditions.	Short term employment of approximately 15 workers will be required during construction. Subsequently, activities for school aged dependents will be ongoing in the new facility.	Short term employment of approximately 15 workers will be required during construction. Subsequently, activities for school aged dependents will be ongoing in the new facility.
<b>HEALTH and SAFETY</b>	No impact.	Brief increase in possibility of accidents during construction. Long-term use of the facility will provide activities for school aged dependents thus decreasing health and safety problems from unsupervised youth after school.	Brief increase in possibility of accidents during construction. Long-term use of the facility will provide activities for school aged dependents thus decreasing health and safety problems from unsupervised youth after school.
<b>BIOLOGICAL RESOURCES</b>	No impact.	Preferred alternative would require removal of several trees and other landscaping.	No impact since resources are not present in these areas.

### 3.0 AFFECTED ENVIRONMENT

DMAFB occupies a portion of the Tucson Valley between the Tucson Mountains and the Rincon and Santa Catalina Mountains with several other ranges marking the more distant boundaries of the valley. These features are within an even larger geographic unit known as the Sonoran Desert which encompasses Southern Arizona and adjacent Northern Mexico, specifically in the Mexican State of Sonora, from which the name of the desert is taken. The designation of the region as a desert is based on climatological and biological factors. Rainfall here averages only 10 to 11 inches per year. Even so, it is sufficient to support a wide variety of hardy cactus and other forms of vegetation which are adapted to the climate. In fact, a number of species, including the Giant Saguaro Cactus, are unique to the Sonoran Desert. A number of animal species have also adapted to this environment in an ecology based on the unusual plant life and low water availability.

Physiographic and geologic characteristics place the locale in a larger region known as the Basin and Range Province which extends from west Texas through southern New Mexico, southern Arizona, adjacent Mexico, Nevada, western Utah, and part of southern California. The Basin and Range province is exactly what its name states: a series of mountain ranges of relatively small geographical extent, with basins between. The Tucson Valley is a typical basin between ranges.

### 3.1 LAND USE

The preferred option site for a new building as well as Alternate Options One and Two, additions to Bldg. 6000 are in the north central portion of DMAFB in an area generally reserved for residential and family support facilities. The preferred option site is vacant but covered by desert landscaping. Alternate Option One is an asphalt covered parking lot. Alternate Option Two is a fenced playground with some playground equipment present. Also, underground utility lines are present in this area.

### 3.2 AIR QUALITY

Vehicles, aircraft, and other urban sources of pollution locally impact air quality at the preferred option location, as well as Alternate Options One and Two.

### 3.3 HEALTH AND SAFETY

No particular hazards to health and safety are present in the areas of the preferred option, or Alternates One or Two.

### 3.4 GEOLOGY AND SOILS

Though the proposed action would have no impact on subsurface geology and resources, it has some potential impact on soils. DMAFB lies on a bajada, a generally flat or slightly rolling surface of confluent alluvial fans which constitute the piedmont slopes of the Tucson Basin. The proposed facilities will be on Mohave soils, whether the preferred option or Alternate Options One or Two is chosen. Such soils include a yellowish brown loam surface layer approximately three inches thick, though the surface layer can be a gravely sandy loam. The subsurface is sandy loam also approximately three inches thick. Subsoils are sandy clay loam and clay loam, present to a depth of 60 inches or more. In some places the soil is effervescent to the surface. Permeability of Mohave soils is moderately slow and runoff is also slow. Susceptibility to water and wind erosion is moderate. Available water capacity is high and the effective rooting depth is 60 inches or more.

### 3.5 SOLID WASTE

The sites are not associated with solid waste in any form.

### 3.6 BIOLOGICAL ENVIRONMENT

The natural environment of the extended region of southern Arizona, as noted in section 3.0, is part of the Sonoran Desert which includes several species of cacti and other vegetation. Many species which are common in this area are found nowhere else in the world.

The area of the preferred option, though landscaped, includes several Saguaro and Barrel Cacti and several Palo Verde trees and Yucca plants. (A survey in September 2004 revealed no burrowing owls residing in or near the preferred option area.) Alternate Option One is already covered by an asphalt parking lot. Alternate Option Two is a fenced playground area with only exposed soils and lightly covered gravel areas.

### 3.7 SOCIAL, ECONOMIC, AND QUALITY OF LIFE

#### 3.7.1 BUILDING, EQUIPMENT, ETC.

All three options are essentially vacant. The preferred option includes desert landscaping. Alternate Option One is covered by an asphalt parking lot. Alternate Option Two is a fenced playground with some playground equipment.

#### 3.7.2 VISUAL

Nearby facilities to the preferred option, and both Options One and Two include housing and residential support facilities. Just southeast of the existing Youth center, Bldg. 6000, is a swimming pool.

#### 3.7.3 NOISE

All three options are below the 65 LDN noise contour.

### 4.0 ENVIRONMENTAL IMPACTS

#### 4.1 NO ACTION

No further impacts can be identified from the alternative of No Action since the preferred option site and Alternates Options One and Two would all remain in their present condition.

#### 4.2 PROPOSED ACTION

##### 4.2.1 LAND USE

Placement of the new facility under the preferred option would cover approximately 15,500 square feet of lands not otherwise utilized for the building itself and 5,000 square feet as an addition to an existing parking lot. Alternate Options One and Two would cover 15,500 square feet of additional lands as addition to existing Bldg. 6000. At Alternate Option Two, a playground would be eliminated and major utility lines would be relocated.

#### 4.2.2 AIR QUALITY

Some particulates and vehicle emissions would be generated during construction. If more than 300 feet of trenching is needed for utility connections or other purposes, a special permit will be required by Pima County. If monitoring procedures of dust raised show particulates have exceeded defined limits, suppression actions such as watering will be employed. This impact would be the same at any of the Alternatives.

#### 4.2.3 HEALTH AND SAFETY

Some possibility of an accident or other incident will be ongoing during construction and subsequent usage, but no more than construction of any other project of this size. Noise levels would increase from construction but this would be of limited duration. Overall, availability of the new facility would improve health and safety by reducing crowding in the existing Youth Center.

#### 4.2.4 GEOLOGY AND SOILS

The proposed facility would have no impact on geology or most soils at the preferred option or Alternate Options one since soils are now covered by gravel or asphalt. At Alternate Option Two, soils now exposed to weathering would be covered.

#### 4.2.5 SOLID WASTE

The site is not associated with solid waste. During construction and subsequent use, any additional waste will be removed as with any residential or business location.

#### 4.2.6 BIOLOGICAL ENVIRONMENT

At the preferred option site, four Saguaro Cacti and two Barrel Cacti are present which would be relocated to a suitable environment as required by the Arizona Native Plant Law for those species. Several Palo Verde trees and Yucca plants, which are not protected, would be removed. No plants or animal habitats are identified in the area of Alternative Options One or Two.

#### 4.2.7 SOCIAL, ECONOMIC, AND QUALITY OF LIFE

The new facility at the preferred option or the addition to existing Bldg. 6000 at Alternate Options One or Two will be consistent with other nearby buildings and will be painted in "earth tone" colors consistent with the surrounding native environment as well as existing buildings.

The short term presence of construction personnel would not be sufficient to require construction of new housing or school facilities regardless of selection of the preferred option, or Alternates Options One or Two. Existing housing facilities and schools will be sufficient for the inclusion of these personnel and their dependents.

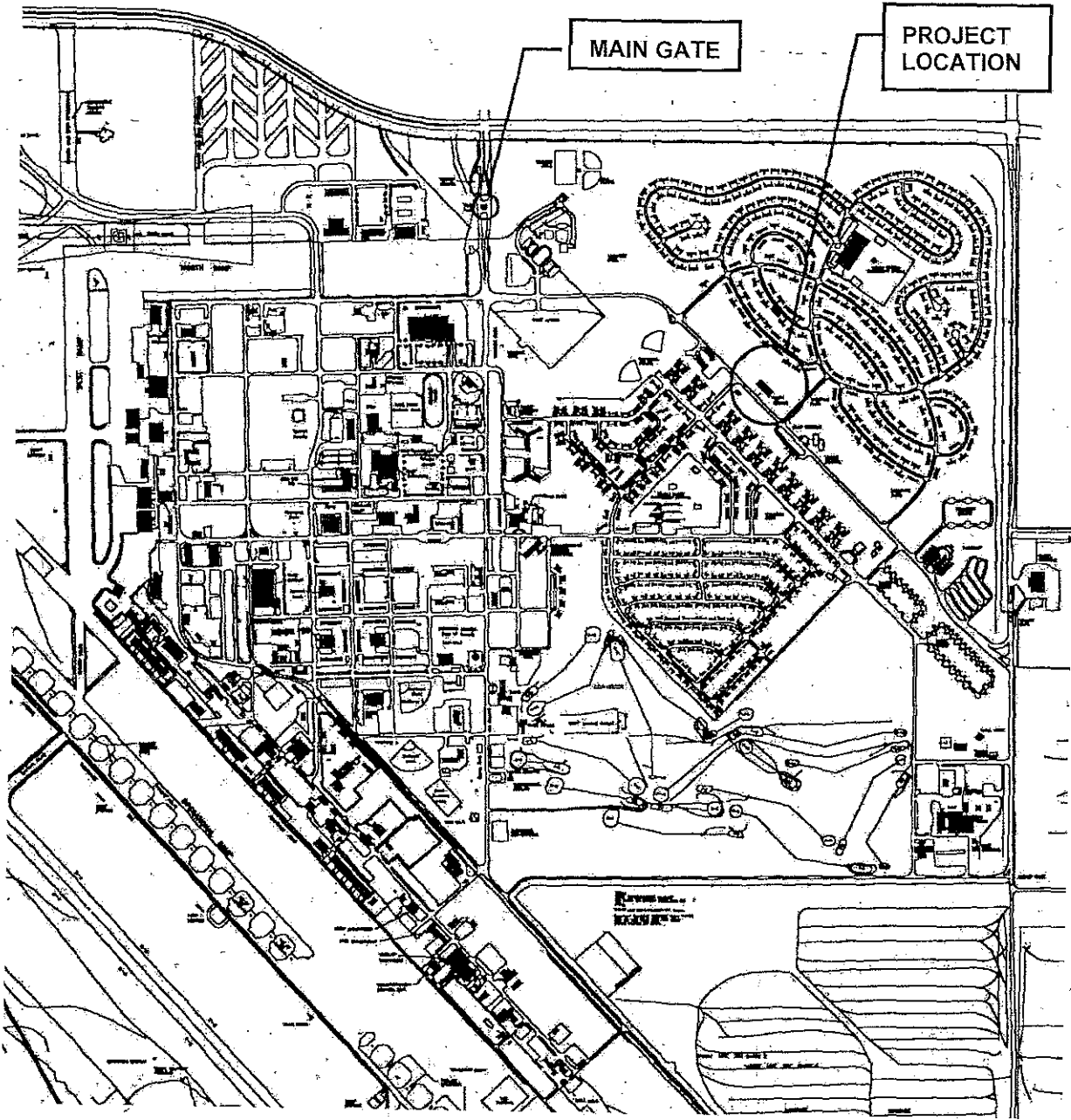
#### 5.0 CONCLUSION

A review of this environmental document and coordination with the appropriate agencies indicates that the project, as proposed, would have no significant impacts upon the existing environment regardless of selection of construction of a new facility, the preferred alternative, or Alternates Options One or Two which would construct an addition to existing Bldg. 6000. Further, there have been no other projects in this locale which have required Environmental Assessments since NEPA was passed in 1970, though nearby facilities date from prior to that date. Thus, the proposed project does not add to any cumulative negative impacts from other recent nearby activities, but will make an overall positive contribution to protection of the environment.

Therefore, preparation of an Environmental Impact Statement (EIS) is not required.

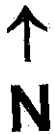
APPENDIX A

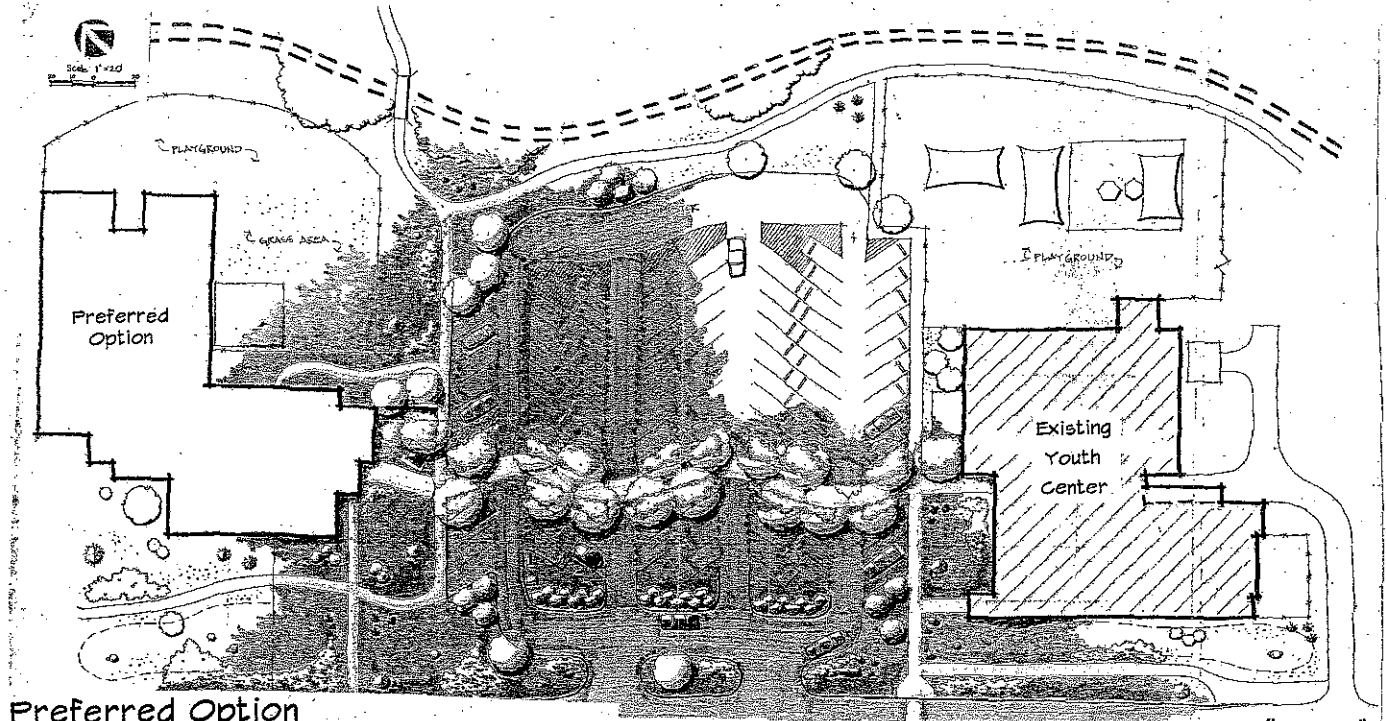
MAPS



# Project Location Map

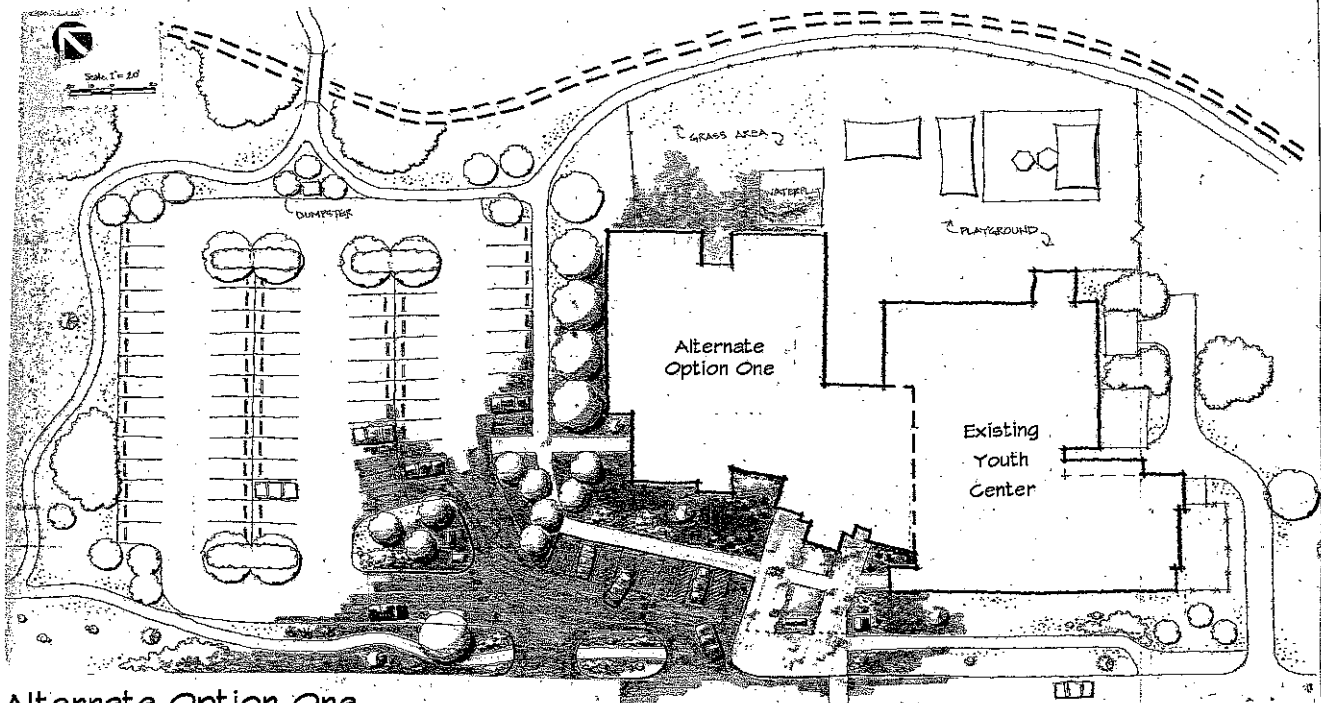
FBNV 064003 Construct School Age Program (SAP) Facility





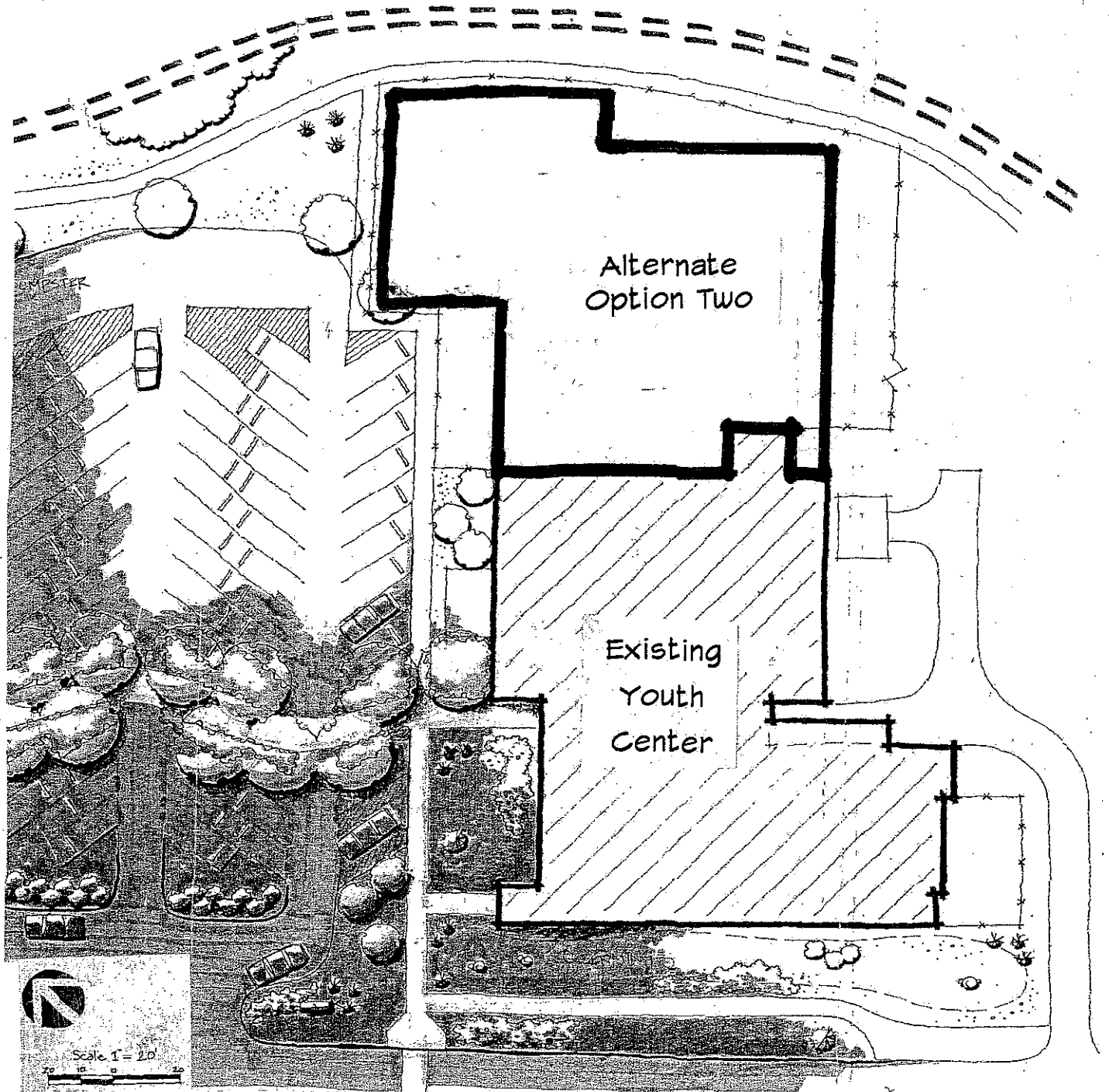
**Preferred Option**

FBNV 064003 Construct School Age Program (SAP) Facility



**Alternate Option One**

FBNV 064003 Construct School Age Program (SAP) Facility

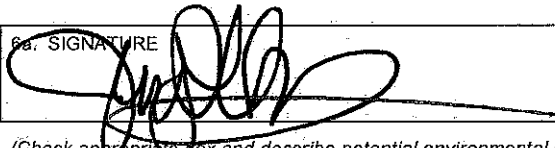
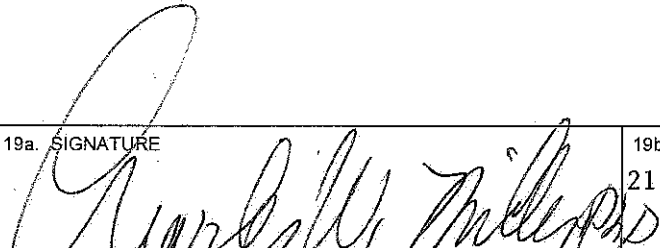


# Alternate Option Two

FBNV 064003 Construct School Age Program (SAP) Facility

APPENDIX B

DOCUMENTATION AND COORDINATION

REQUEST FOR ENVIRONMENTAL IMPACT ANALYSIS		Report Control Symbol RCS:
INSTRUCTIONS: Section I to be completed by Proponent; Sections II and III to be completed by Environmental Planning Function. Continue on separate sheet as necessary. Reference appropriate item number(s).		
<b>SECTION I - PROPONENT INFORMATION</b>		
1. TO (Environmental Planning Function)	2. FROM (Proponent organization and functional address symbol)	2a. TELEPHONE NO.
355CES/CEV (Mr. Thompson / Dr. C.W. Miller)	355CES/CECP (Mr. Jerry L. Sorensen, RA)	228-5141
3. TITLE OF PROPOSED ACTION FBNV 064003 Construct School Age Program (SAP) Facility		
4. PURPOSE AND NEED FOR ACTION (Identify decision to be made and need date) Determine, if any, environmental issues that may effect the project to construct a new facility to the northwest of the existng Youth Center, Building 6000. Environmental survey needed by November 2004.		
5. DESCRIPTION OF PROPOSED ACTION AND ALTERNATIVES (DOPAA) (Provide sufficient details for evaluation of the total action.) Construct a 15,500 square foot facility to the northwest side of the existng Yoith Center parking lot. The new facility will share the existng parking area.		
6. PROPONENT APPROVAL (Name and Grade)	6a. SIGNATURE	6b. DATE
Mr. Jerry L. Sorensen, RA GS-11		20220904
<b>SECTION II - PRELIMINARY ENVIRONMENTAL SURVEY.</b> (Check appropriate box and describe potential environmental effects including cumulative effects.) (+ = positive effect; 0 = no effect; - = adverse effect; U= unknown effect)		+   0   -   U
7. AIR INSTALLATION COMPATIBLE USE ZONE/LAND USE (Noise, accident potential, encroachment, etc.)		<input type="checkbox"/> + <input checked="" type="checkbox"/> 0 <input type="checkbox"/> - <input type="checkbox"/> U
8. AIR QUALITY (Emissions, attainment status, state implementation plan, etc.)		<input type="checkbox"/> + <input checked="" type="checkbox"/> 0 <input type="checkbox"/> - <input type="checkbox"/> U
9. WATER RESOURCES (Quality, quantity, source, etc.)		<input type="checkbox"/> + <input checked="" type="checkbox"/> 0 <input type="checkbox"/> - <input type="checkbox"/> U
10. SAFETY AND OCCUPATIONAL HEALTH (Asbestos/radiation/chemical exposure, explosives safety quantity-distance, bird/wildlife aircraft hazard, etc.)		<input checked="" type="checkbox"/> + <input type="checkbox"/> 0 <input type="checkbox"/> - <input type="checkbox"/> U
11. HAZARDOUS MATERIALS/WASTE (Use/storage/generation, solid waste, etc.)		<input type="checkbox"/> + <input checked="" type="checkbox"/> 0 <input type="checkbox"/> - <input type="checkbox"/> U
12. BIOLOGICAL RESOURCES (Wetlands/floodplains, threatened or endangered species, etc.)		<input type="checkbox"/> + <input type="checkbox"/> 0 <input checked="" type="checkbox"/> - <input type="checkbox"/> U
13. CULTURAL RESOURCES (Native American burial sites, archaeological, historical, etc.)		<input type="checkbox"/> + <input checked="" type="checkbox"/> 0 <input type="checkbox"/> - <input type="checkbox"/> U
14. GEOLOGY AND SOILS (Topography, minerals, geothermal, Installation Restoration Program, seismicity, etc.)		<input type="checkbox"/> + <input checked="" type="checkbox"/> 0 <input type="checkbox"/> - <input type="checkbox"/> U
15. SOCIOECONOMIC (Employment/population projections, school and local fiscal impacts, etc.)		<input checked="" type="checkbox"/> + <input type="checkbox"/> 0 <input type="checkbox"/> - <input type="checkbox"/> U
16. OTHER (Potential impacts not addressed above.)		<input type="checkbox"/> + <input checked="" type="checkbox"/> 0 <input type="checkbox"/> - <input type="checkbox"/> U
<b>SECTION III - ENVIRONMENTAL ANALYSIS DETERMINATION</b>		
17. <input type="checkbox"/> PROPOSED ACTION QUALIFIES FOR CATEGORICAL EXCLUSION (CATEX) # _____ ; OR <input checked="" type="checkbox"/> PROPOSED ACTION DOES NOT QUALIFY FOR A CATEX; FURTHER ENVIRONMENTAL ANALYSIS IS REQUIRED.		
18. REMARKS  Construction will require an Environmental Assessment.		
19. ENVIRONMENTAL PLANNING FUNCTION CERTIFICATION (Name and Grade)	19a. SIGNATURE	19b. DATE
Charles W. Miller PhD GS-11		21 Sept. 2004

1. COMPONENT <b>Air Force</b>		FY 2006 MILITARY CONSTRUCTION PROJECT DATA		2. DATE	
3. INSTALLATION AND LOCATION <b>Davis-Monthan Air Force Base, Arizona (ACC)</b>			4. PROJECT TITLE <b>Construct School Age Program (SAP) Facility</b>		
5. PROGRAM ELEMENT <b>NAF</b>		6. CATEGORY <b>740-883</b>	7. PROJECT NUMBER <b>FBNV 064003</b>	8. PROJECT COST (\$000) <b>4,600.0</b>	
9. COST ESTIMATES					
ITEM		UM	QUANTITY	UNIT COST	COST (\$000)
<b>PRIMARY FACILITIES</b>					<b>3,421</b>
Construct School Age Program Facility		SM	1,440	2,376	(3,421)
<b>SUPPORTING FACILITIES</b>					<b>717</b>
Utilities		SM	1,440	249	(358)
Pavements		SM	1,440	75	(108)
Site Improvements		SM	1,440	113	(162)
Communications Support		SM	1,440	17	(24)
Fire Protection Systems		SM	1,440	44	(64)
<b>SUBTOTAL</b>					<b>4,138</b>
Contingency		(5%)			207
<b>TOTAL CONTRACT PRICE</b>					<b>4,345</b>
SIOH		(5.7%)			248
<b>TOTAL REQUESTED (\$000)</b>					<b>4,593</b>
<b>TOTAL REQUESTED ROUNDED</b>					<b>4,600</b>
Unfunded Design		(10%)			(460)
10. DESCRIPTION OF PROPOSED WORK: Construct a stand alone 1,440 SM facility in support of the Youth Center's School Age Program (SAP). Includes site improvements and desert (xeriscape) landscaping. Area Cost Factor = 0.97 Air Conditioning = 45 tons					
11. REQUIREMENT: 2,960 SM Adequate: 1,038 SM Substandard: 456 SM					
<u>PROJECT:</u> Construct new facility to provide required activity rooms, food service, and administration space for the School Age Program (SAP) to relocate these functions from the existing facility jointly used in conjunction with other Youth Center programs.					
<u>REQUIREMENT:</u> Adequate space is required to accommodate the youth activities, youth support, and School Age Program (SAP) for young members of military and DoD civilian families, as allowed in AFH 32-1084, paragraph 16.15. Youth programs are essential to the mission by allowing military and civilian members to accomplish their jobs with less anxiety over quality child care. The project will not only eliminate 1,440 SM of the current space deficiency restricting current activities but also vacate space in the existing Youth Center facility required for appropriate Youth Center operations.					
<u>CURRENT SITUATION:</u> The Youth Center programs share space with one another to meet the needs of the youth on Davis-Monthan AFB. The space sharing with self-directed pre-teen and teen programs drastically interfere with the school age programs (SAP). The joint use of the existing facility limits the set-up opportunities for school age children (child care) and their programs. In addition, the lack of adequate storage severely hampers all programs. To help eliminate operating in an insufficient area and inefficiently shared space, a stand-alone SAP facility is required. A companion project (FBNV064004 ADAL Youth Center) to alter the vacated Youth Center space as been programmed to meet the remaining space requirements for all current functions. These issues were identified, in detail, in an October 1996 inspection in which Davis-Monthan AFB was tasked to remedy this situation. A December 2002 Needs Assessment Study was conducted and established the space allocation requirement for all DMAFB Youth Center operations and activities.					
<u>IMPACT IF NOT PROVIDED:</u> The Youth Center and associated activities will continue to violate DoD requirements for space and program criteria. Each program suffers and potential revenue is lost due to space constraints, ultimately effecting base morale.					

1. COMPONENT <b>Air Force</b>	<b>FY 2006 MILITARY CONSTRUCTION PROJECT DATA</b>	2. DATE
3. INSTALLATION AND LOCATION: <b>Davis-Monthan Air Force Base, Arizona (ACC)</b>		
4. PROJECT TITLE: <b>Construct School Age Program (SAP) Facility</b>		5. PROJECT NUMBER <b>FBNV 064003</b>

**Existing Facilities Deficiency Detail Data Sheet (D3)**

1. Requirements and Assets: Category Code 740-883

(1) Scope of Request: 1,440 SM

(2) Mission:

355 Wing, 355 Operations Group, 355 Maintenance Group, 355 Mission Support Group, 355 Medical Group, Headquarters 12th Air Force, 41 and 43 Electronics Combat Squadron (ECS), 55 Electronic Combat Group, 755th Aircraft Maintenance Squadron, 755th Operations Support Squadron, Aerospace Maintenance and Regeneration Center (AFMC), 305th Rescue Squadron (AFRC), Detachment 3, ACC Training Support Squadron (ACC), 305th Rescue Squadron (AFRC), 162nd Fighter Wing (Arizona Air National Guard), 372nd Training Squadron, Detachment 11 (AETC), U.S. Customs Service, Defense Investigative Service, Naval Inventory Control Point,

(3) Requirement

Requirements are based on the HQ AFSVA/SVP Oct 1996, Youth Flight Program inspection findings, HQ AFSVA Needs Assessment Study Dec 2002, AFH 32-1084, and special user requirements. Total base requirements in the category code is 2960 SM.

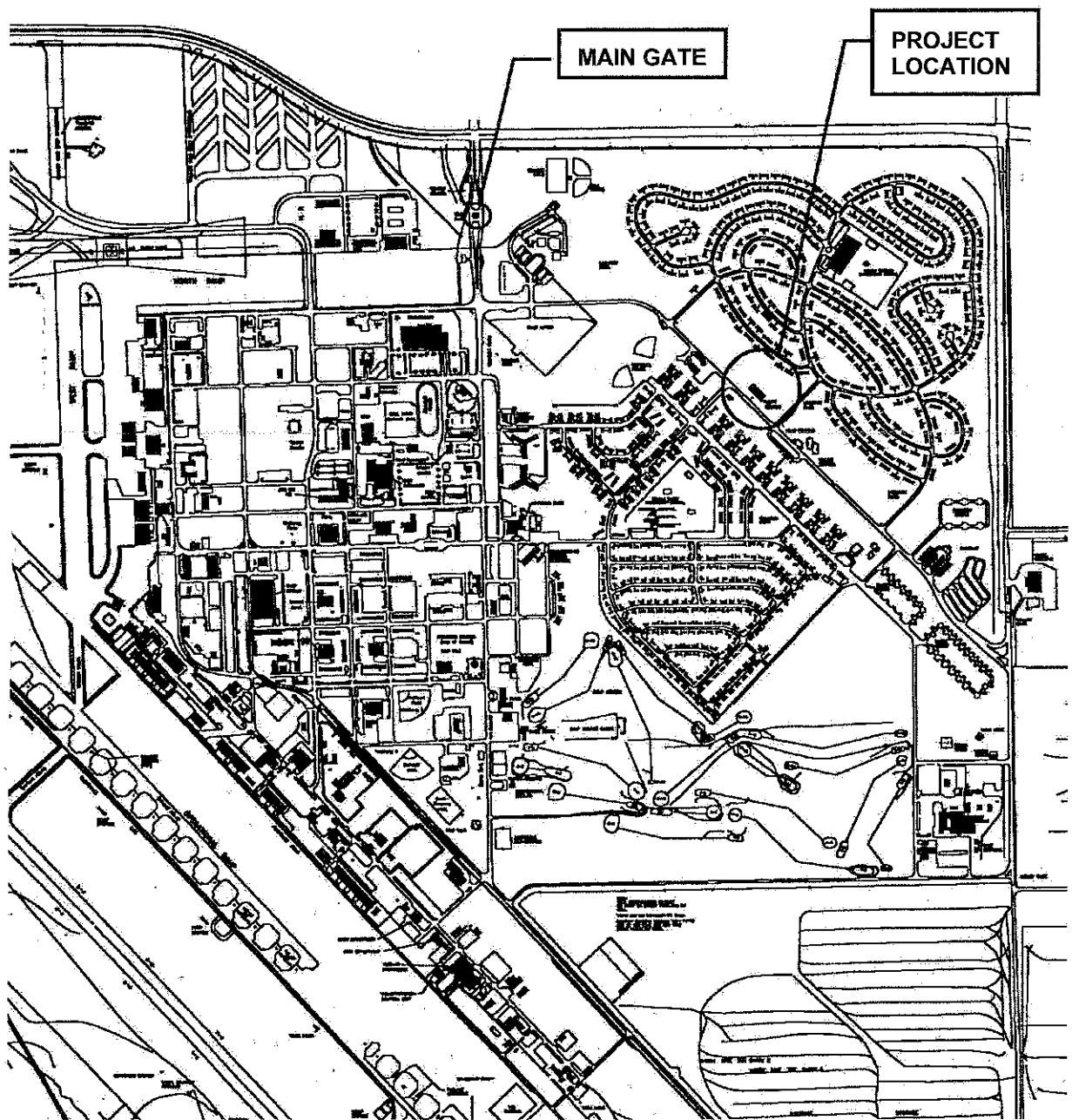
(4) <u>Functional Breakout of Proposed Project Scope:</u>	<u>Area (SM)</u>
School Age Program	1,415
Administrative Space	25

(5) <u>Requirements/Assets Category Code 740-883:</u>	<u>SM</u>	<u>No. of Facs</u>
a. Total requirement	2,960	2
b. Existing substandard	456	1
c. Existing adequate	1,038	1
d. Funded, not in inventory	-0-	0
e. Adequate assets(c+d)	1,038	1
f. Included in prior program	-0-	0
g. Deficiency (a-e-f)	1,922	1

Facility Summary: Category Code 740-883

<u>Nomenclature</u>	<u>Fac #</u>	<u>Scope (SM) Used/Total</u>	<u>Yr</u>	<u>Code</u>	<u>Const</u>	<u>Remarks</u>
<u>Adequate:</u>						
Youth Center	6000	1,038/1,494	1988	1	Exisitng Block	Retain
Total Adequate:		1,038 SM				
<u>Substandard:</u>						
Youth Center	6000	456/1,494	1988	1	Exisitng Block	Retain and Alter
Total Substandard:		456 SM				
<u>Deficiency:</u>						
SAP Facility (Youth Center)		1,440/1,440	2006	1	New Block	This Project Request FBNV 064003
ADAL Youth Center	6000	482/1,494	2006		ADAL Block	Companion Project FBNV 064004
Total Deficiency Programmed:		1,922 SM				Both projects executed, no deficiency remains

1. COMPONENT <b>Air Force</b>	<b>FY 2006 MILITARY CONSTRUCTION PROJECT DATA</b>	2. DATE
3. INSTALLATION AND LOCATION: <b>Davis-Monthan Air Force Base, Arizona (ACC)</b>		
4. PROJECT TITLE: <b>Construct School Age Program (SAP) Facility</b>	5. PROJECT NUMBER <b>FBNV 064003</b>	



**LOCATION PLAN**

NTS



## BIBLIOGRAPHY

Altschul, Jeffrey H. 1988. "Life Away from the River: A Cultural Resources Class II Survey of Davis-Monthan A.F.B., Arizona," Statistical Research, Tech. Series No. 14.

Higginbotham/Briggs & Associates. "The General Plan." Davis-Monthan Air Force Base, Tucson, Arizona." October 1996.

James M. Montgomery, Consulting Engineers for US Army Corps of Engineers, Omaha Dist., April 1990. "Installation Restoration Program Advance Draft Remedial Investigation Report."

Sept. 1992.

---

"Draft Site Investigation Report."

US Air Force. May 1995. *Cornerstone 2020, a Long Range Planning Document, Davis-Monthan Air Force Base.*

US Air Force. 23 August 2000. *The Davis-Monthan General Plan. A Planning Summary Document Davis-Monthan Air Force Base.*

US Air Force. 26 September 1997. "Environmental Assessment, Expansion of the Youth Center, Davis-Monthan Air Force Base."

## INTERDISCIPLINARY TEAM

C.W. Miller, Team Leader

Gwen Lisa, Natural/Cultural resources

Jennifer Meyer, Community Planning

Janie McLaury, Public Affairs

Lt. Mario F. Murray, Bioenvironmental

Capt. Thomas Collick, Legal Issues

Mike Barnes, Safety

Patrick Ross, Air Pollution Issues

Jerry Sorensen, 355 CES/CEVC

WG# 1410

STAFF SUMMARY SHEET

	TO	ACTION	SIGNATURE (Surname), GRADE AND DATE		TO	ACTION	SIGNATURE (Surname), GRADE AND DATE
1	355 MSG/CC	Coord	<i>[Signature]</i> COL 15 OCT 04	6	355 WG/CV	Sign	<i>[Signature]</i> COL USAF 28 OCT
2	355 WG/JA	Coord	COLLIER/CAPT 21 OCT 04 SEE ENCLOSED COMMENTS	7			
3	355 WG/CCA	Process	GONZALEZ SGT 21 OCT 04	8			
4	355 WG/CCE	Coord	<i>[Signature]</i> MAJ 21 OCT 04	9			
5	355 WG/CS	Coord		10			

SURNAME OF ACTION OFFICER AND GRADE	SYMBOL	PHONE	TYPIST'S INITIALS	SUSPENSE DATE
C.W. Miller, GS-11	355 CES/CEVA	8-4035	cwm	

SUBJECT: Environmental Assessment (EA) and Finding of No Significant Impact (FONSI) documents for construction of School Aged Program Facility at Davis-Monthan AFB (DMAFB) DATE: OCT 06 2004

**SMMARY**

1. **PURPOSE:** Obtain 355 WG/CV signature on the EA and FONSI documents on a proposed facility for School Aged Children to supplement the existing Youth Center at DMAFB.

2. **BACKGROUND:** A deficiency of space has been identified in Bldg 6000, the existing Youth Center. In addition, removal of school aged children's programs to a separate facility, leaving the Youth Center for teenagers is suggested. Construction of a new facility of 15,500 square feet, with an additional 5,000 feet of parking space, is identified as necessary to meet this deficiency.

3. **DISCUSSION:** The National Environmental Policy Act of 1969 requires preparation of an EA for each project (Tab 2). A FONSI document is also included for the project (Tab 1). The FONSI document summarizes the EA document and states that the project is too small to constitute a "major federal action resulting in significant impacts to the environment," and therefore does not require preparation of an Environmental Impact Statement (EIS).

4. **RECOMMENDATION:** 355 WG/CV sign the FONSI document at Tab 1.

*[Signature]*  
 MICHAEL R. TORIELLO, GM-14  
 Base Civil Engineer

- 2 Tabs
1. FONSI on School Aged Facility
  2. EA on School Aged Facility

Final 28 Oct 04 JAS

MSG 2862