

Low Impact Development Strategies

Infrastructure for Sustainable Communities

Catherine Broad
WHS ETSD SEMB
May 7, 2009

Report Documentation Page

Form Approved
OMB No. 0704-0188

Public reporting burden for the collection of information is estimated to average 1 hour per response, including the time for reviewing instructions, searching existing data sources, gathering and maintaining the data needed, and completing and reviewing the collection of information. Send comments regarding this burden estimate or any other aspect of this collection of information, including suggestions for reducing this burden, to Washington Headquarters Services, Directorate for Information Operations and Reports, 1215 Jefferson Davis Highway, Suite 1204, Arlington VA 22202-4302. Respondents should be aware that notwithstanding any other provision of law, no person shall be subject to a penalty for failing to comply with a collection of information if it does not display a currently valid OMB control number.

| | | | | | |
|--|------------------------------------|-------------------------------------|---|---|---------------------------------|
| 1. REPORT DATE 07 MAY 2009 | | 2. REPORT TYPE | | 3. DATES COVERED 00-00-2009 to 00-00-2009 | |
| 4. TITLE AND SUBTITLE Low Impact Development Strategies: Infrastructure for Sustainable Communities | | | | 5a. CONTRACT NUMBER | |
| | | | | 5b. GRANT NUMBER | |
| | | | | 5c. PROGRAM ELEMENT NUMBER | |
| 6. AUTHOR(S) | | | | 5d. PROJECT NUMBER | |
| | | | | 5e. TASK NUMBER | |
| | | | | 5f. WORK UNIT NUMBER | |
| 7. PERFORMING ORGANIZATION NAME(S) AND ADDRESS(ES) Washington Headquarters Service, Engineering & Technical Services Division, 1155 Defense Pentagon, Washington, DC, 20301-1155 | | | | 8. PERFORMING ORGANIZATION REPORT NUMBER | |
| 9. SPONSORING/MONITORING AGENCY NAME(S) AND ADDRESS(ES) | | | | 10. SPONSOR/MONITOR'S ACRONYM(S) | |
| | | | | 11. SPONSOR/MONITOR'S REPORT NUMBER(S) | |
| 12. DISTRIBUTION/AVAILABILITY STATEMENT Approved for public release; distribution unlimited | | | | | |
| 13. SUPPLEMENTARY NOTES Presented at the NDIA Environment, Energy Security & Sustainability (E2S2) Symposium & Exhibition held 4-7 May 2009 in Denver, CO. | | | | | |
| 14. ABSTRACT | | | | | |
| 15. SUBJECT TERMS | | | | | |
| 16. SECURITY CLASSIFICATION OF: | | | 17. LIMITATION OF ABSTRACT Same as Report (SAR) | 18. NUMBER OF PAGES 72 | 19a. NAME OF RESPONSIBLE PERSON |
| a. REPORT unclassified | b. ABSTRACT unclassified | c. THIS PAGE unclassified | | | |

Today's talk covers...

Natural Systems, Engineered Systems, Potential Impacts of Development

LID overview: goal of these sustainable practices, and strategies

LID materials, methods, systems and technologies, and Case Studies

Costs & Benefits

Policies

Resources

Ecosystems and society

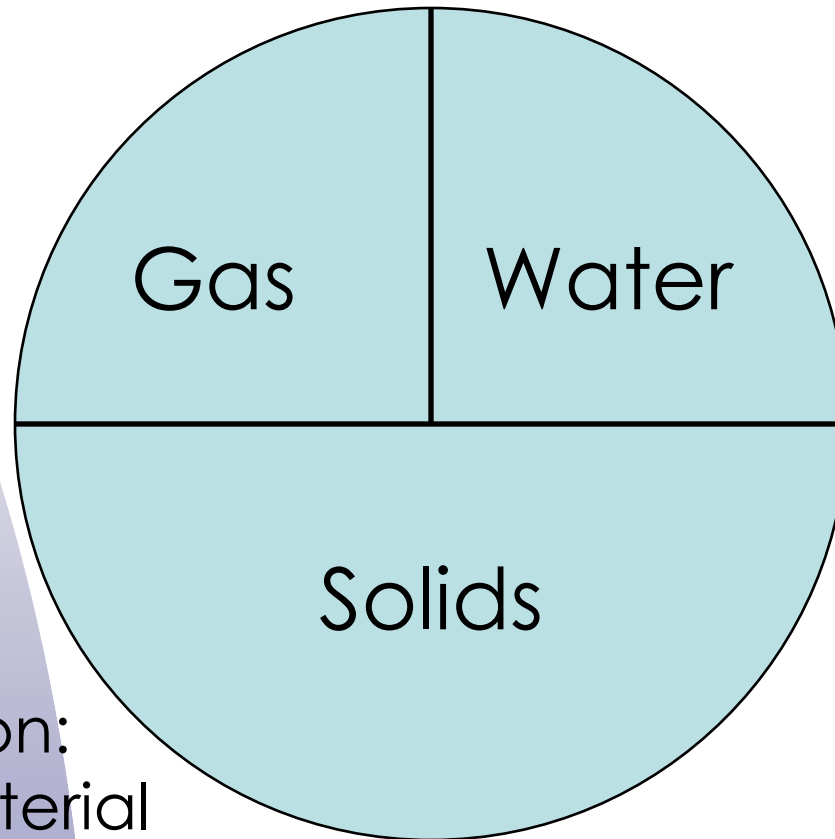
In urban, suburban, and rural communities, structures / infrastructure serve -

- Government
- Commerce
- Recreation areas
- Industry
- Schools
- Residences

Society relies upon both Natural and Engineered systems for -

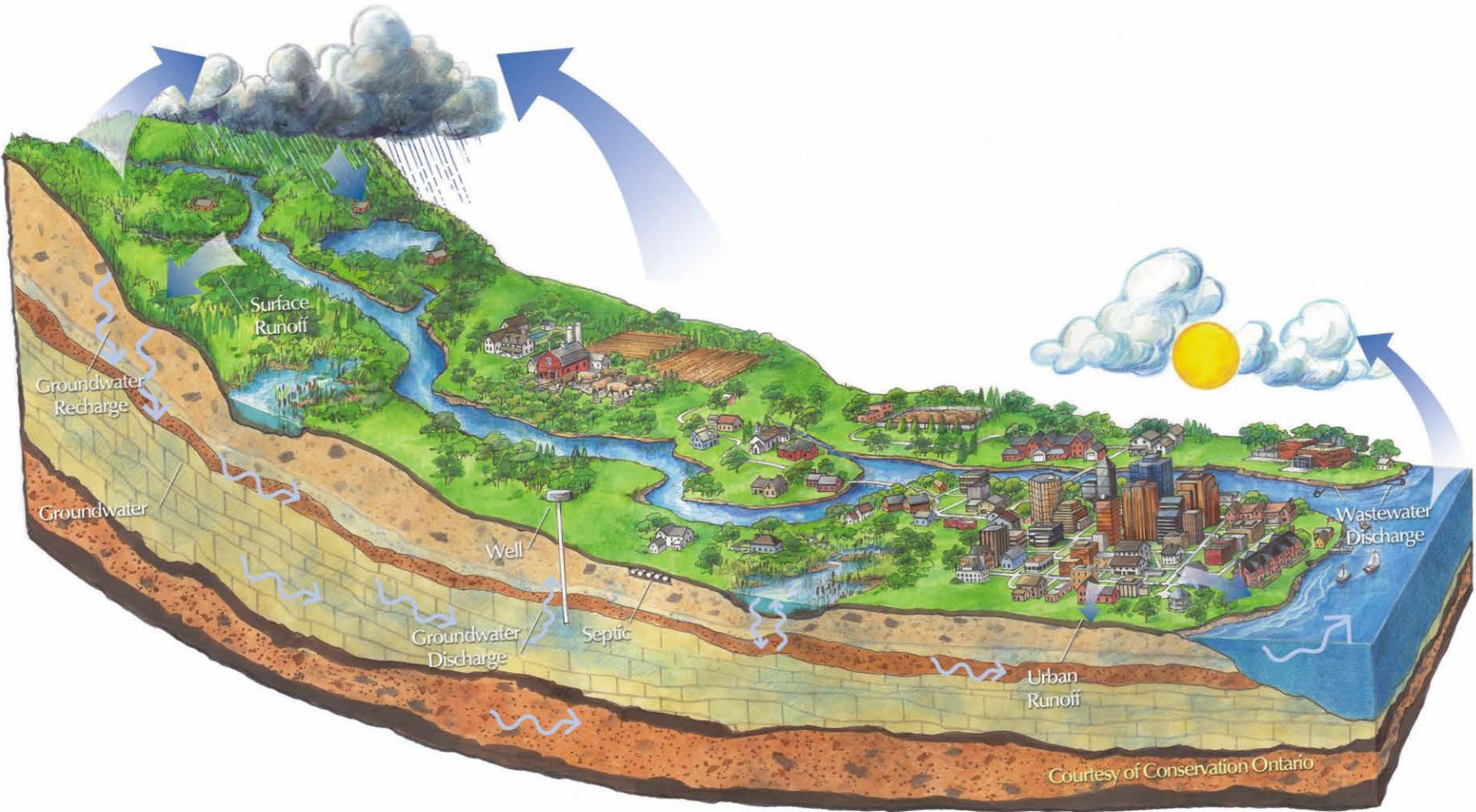
- energy
- moderate temperatures
- earth resources, and
- contact with nature
- air, water, food

What is soil?

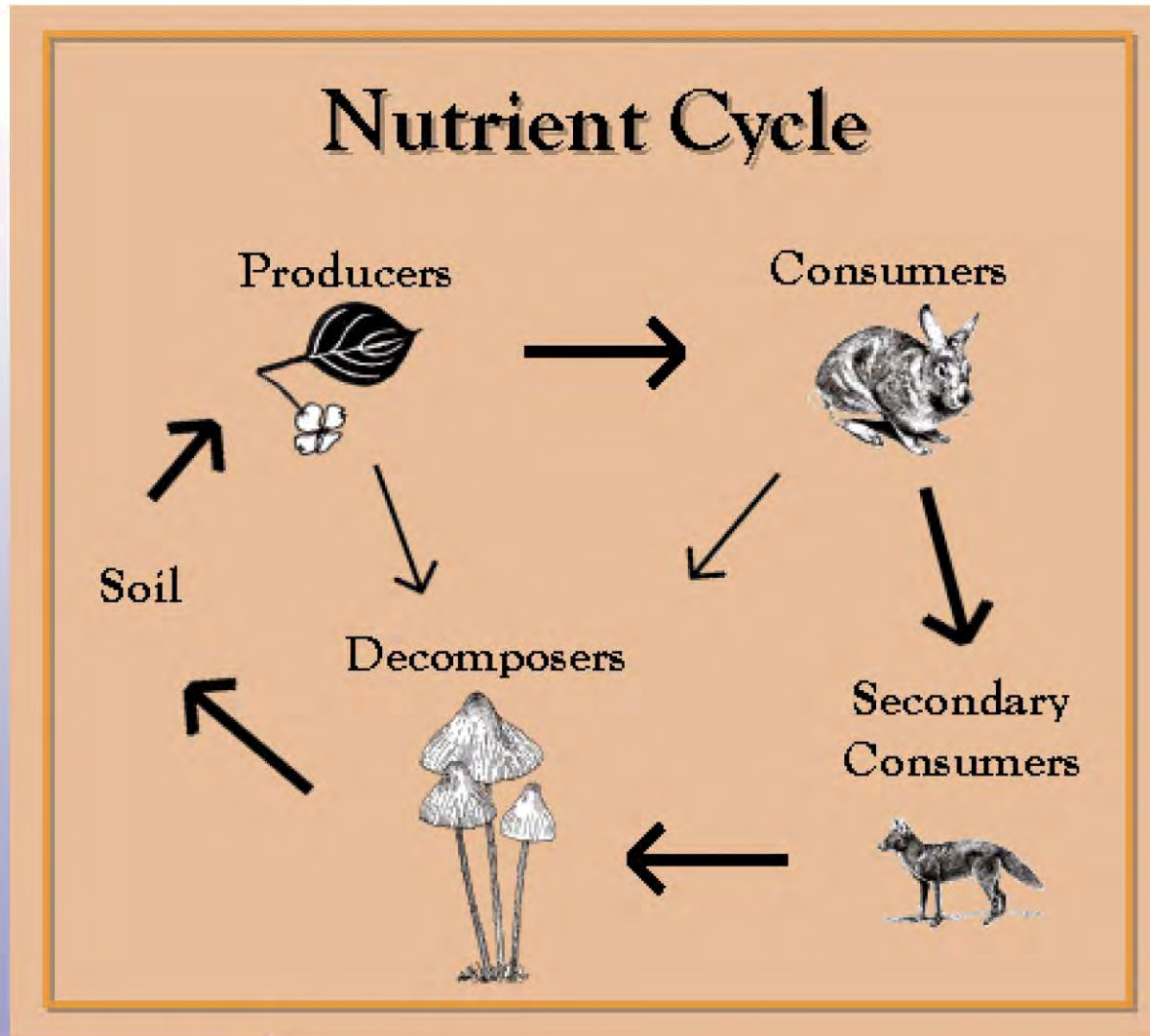


Soil's composition:
50% solid material
25% water
25% gas

The water cycle



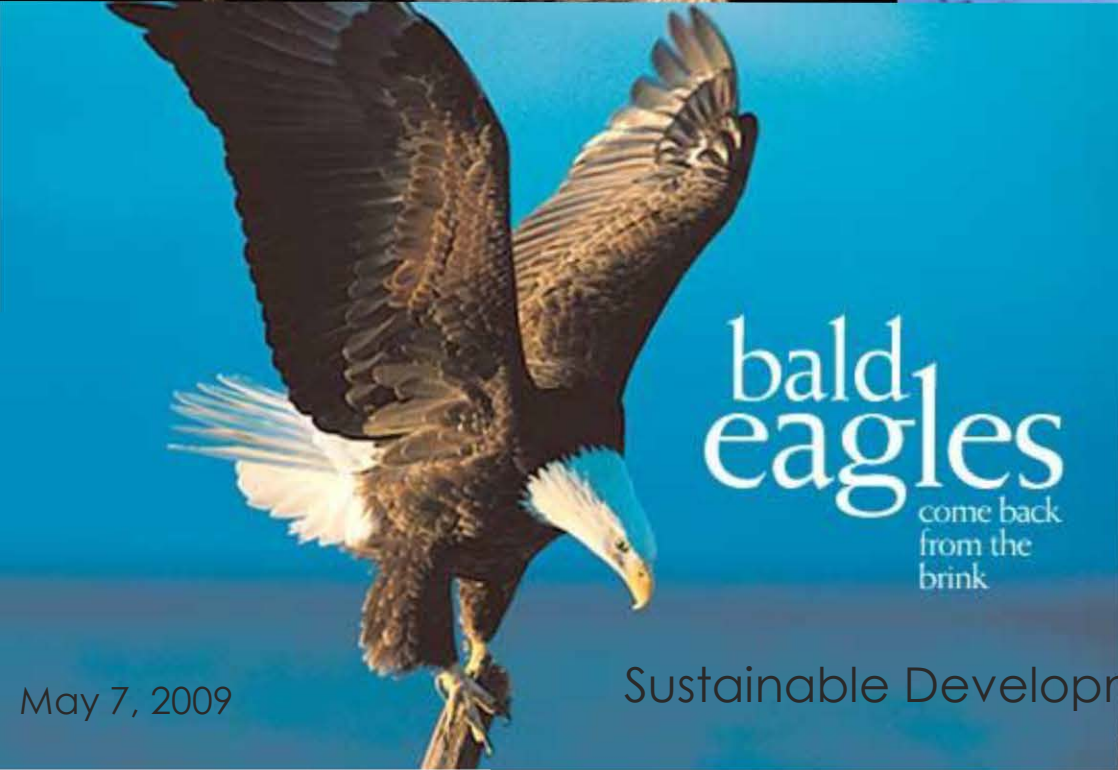
The Nutrient Cycle



U.S. Migratory Shorebirds



Raptors



May 7, 2009

Sustainable Development

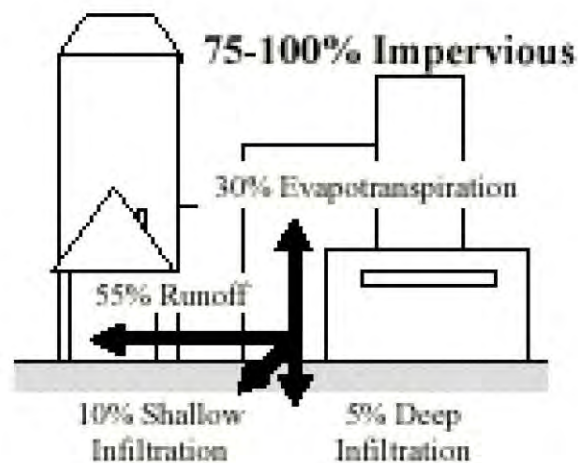
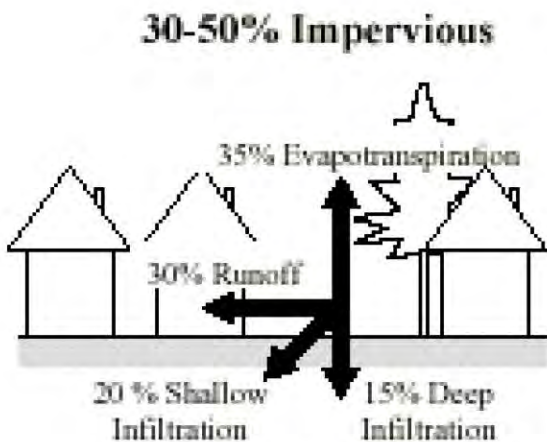
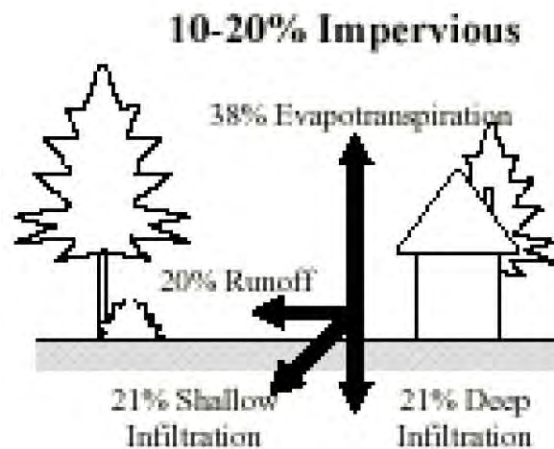
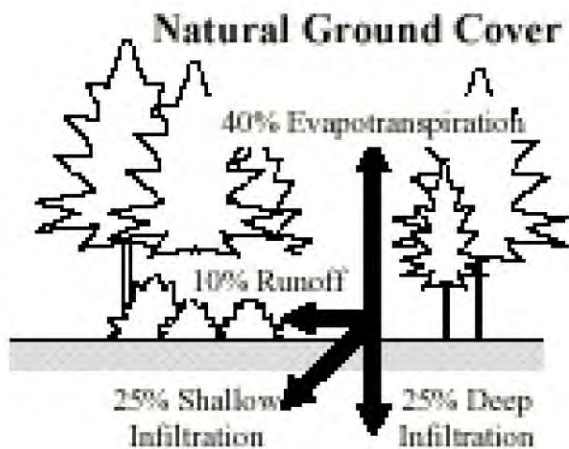
Mammals – Washington DC region



Land Development components

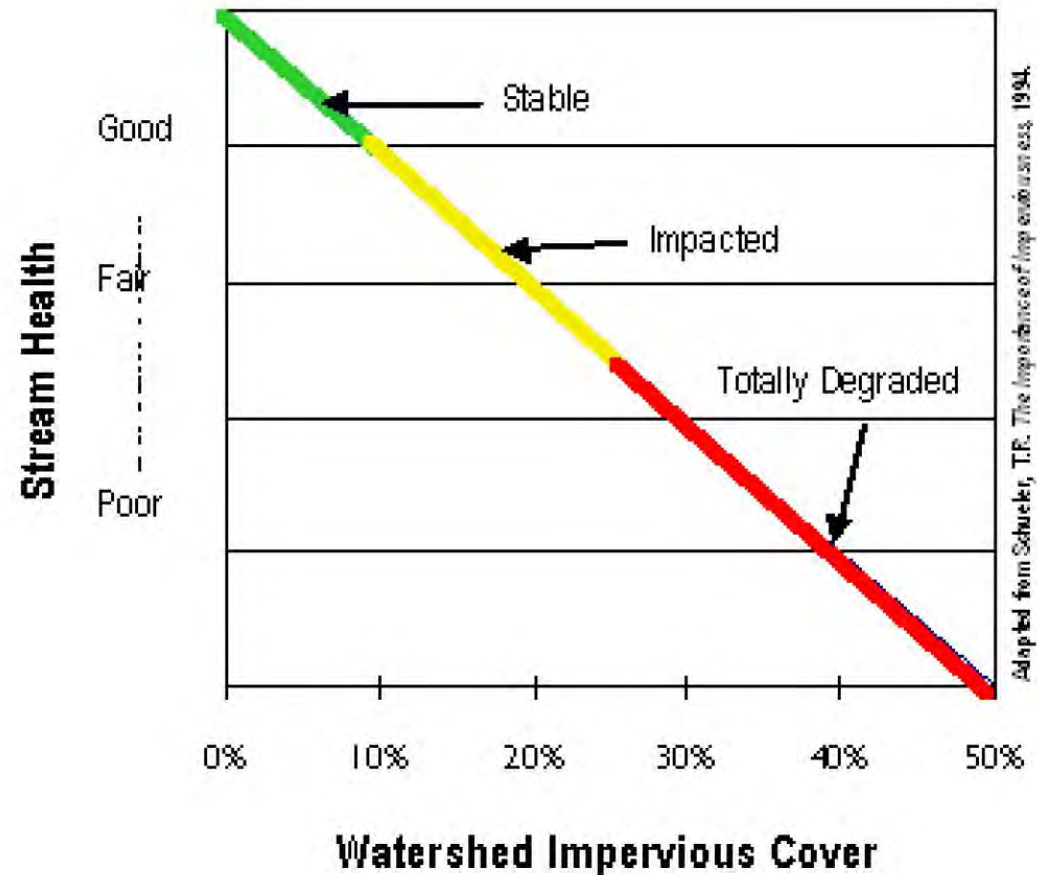
- Groundwater conditions / soil stability
To maintain structural integrity,
primary principle: keep water out of buildings
- Water systems serving buildings – rivers and streams,
water treatment
- Agriculture – water affects land, agricultural
processes affects land
- Roads – mobility and
severe weather
- Electrical power lines, and
- Communication:
Telephone and internet lines.





Source: Adapted from Arnold and Gibbons, 1996

Relationship between Impervious Cover and Stream Health



Impervious cover in Arlington VA

Arlington's
Impervious cover
~ 40%



Arlington VA storm sewer network



watershed managers deal with holistic effects...

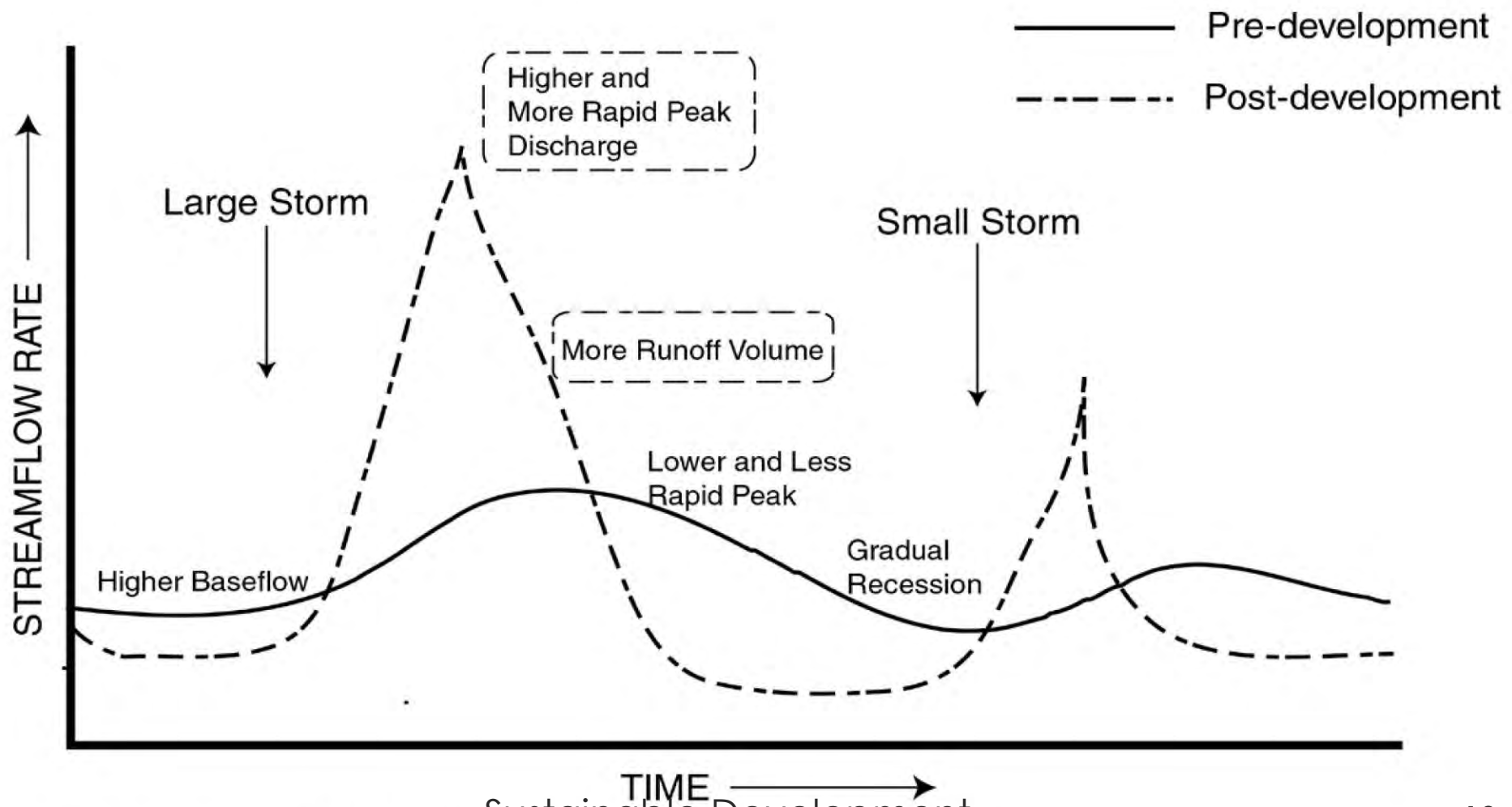
lower densities create more run-off and consume 2/3 more land than the higher densities





What's the Problem?

Post-development Feast or Famine



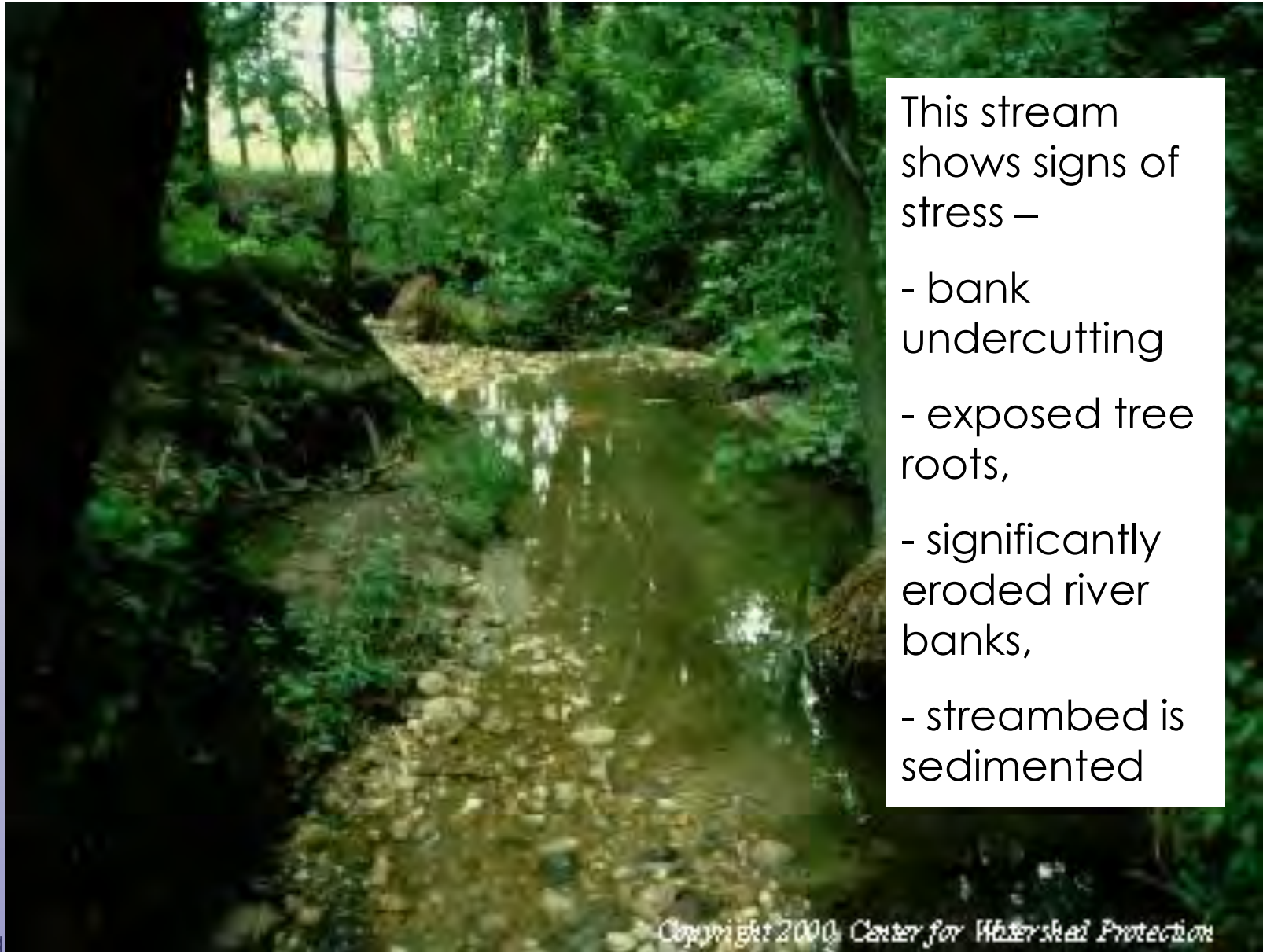
Healthy Watershed

In watersheds with 5% impervious cover or less, streams remain stable and connected to floodplains –

- maintains good pool and riffle structure
- large, wetted perimeter in low flow times
- good riparian canopy coverage.



5% to 10% Imperviousness



This stream shows signs of stress –

- bank undercutting
- exposed tree roots,
- significantly eroded river banks,
- streambed is sedimented

10% Imperviousness

At 10% impervious cover, the stream has more visibly impacts –

- approximately double original size

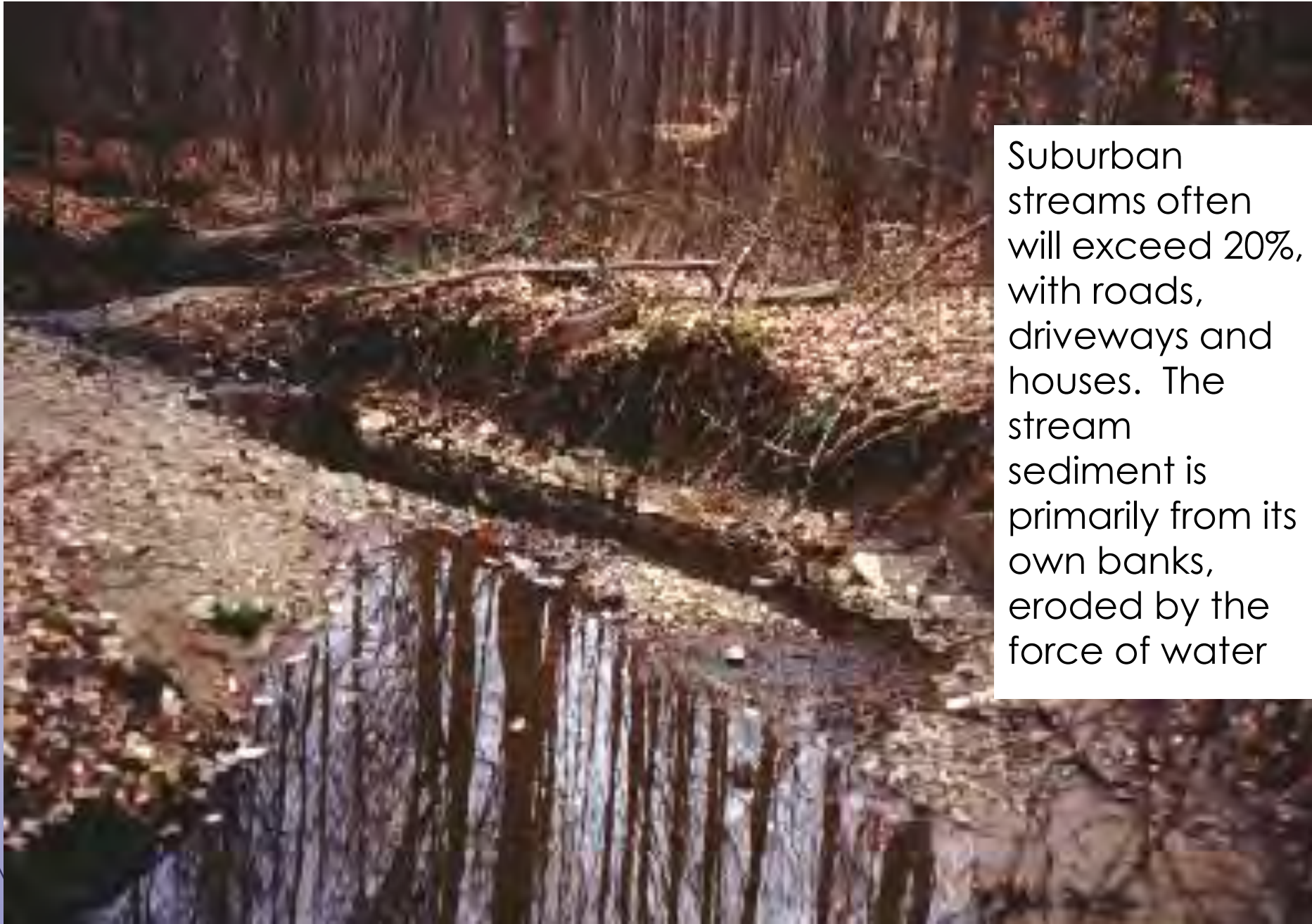
- Exposed tree roots are

- Lost the pool and riffle structure belonging to sensitive streams



Copyright 2000 Center for Watershed Protection

20% Imperviousness



Suburban streams often will exceed 20%, with roads, driveways and houses. The stream sediment is primarily from its own banks, eroded by the force of water

Also 20% Imperviousness



The surrounding area of this stream is approximately 20% impervious cover. The stream shows erosion that is worsened, due to an absence of vegetation to hold together bank structure.





What needs to change?

Paradigm Shift: Rain is a Resource

- Drinking water
- Ground water recharge
- Stream baseflow
- Trees & other plants
- Aesthetic qualities



Development

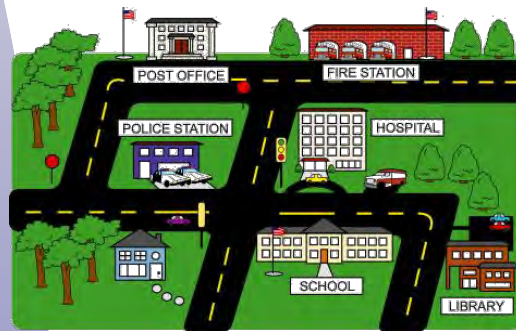
Source: EPA Office of Water, 2008

Paradigm Shift: Trifocal Approach to Stormwater Management

Region or
Watershed



Neighborhood



Site



Sustainable Development

Keep Water out of Pipes

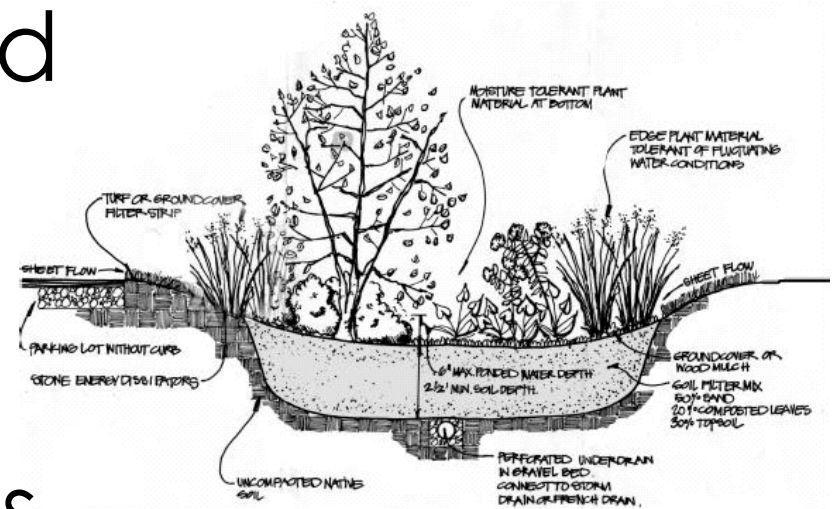


Bioretention



Bioretention

- Soil and plant-based
- Used to filter and infiltrate runoff
- Mimics the natural vegetation's infiltrative properties
- Reduces runoff rates and volumes
- Reduce CSO/SSO volume and frequency



Comparison - Removal Efficiencies for Detention and Biofiltration

| Parameter | Dry Detention Basins | Biofiltration Basins |
|-----------|----------------------|----------------------|
| TSS | 70% - 90% | 90% |
| TP | 10% - 60% | 70% - 83% |
| TKN | 20% - 60% | 68% - 80% |
| BOD | 30% - 40% | 60% - 80% |
| Lead | 20% - 60% | 93% - 98% |
| Zinc | 40% - 60% | 93% - 98% |
| TPHC | 60% - 77% | 90% |

Open Swales



Sustainable Development

Grassed Swale Pollutant Removal Efficiencies

| Removal Efficiencies (% Removal) | | | | | | | |
|--|------|-----|----|-----------------|----------|----------|-----------------|
| Study | TSS | TP | TN | NO ₃ | Metals | Bacteria | Type |
| Caltrans 2002 | 77 | 8 | 67 | 66 | 83-90 | -33 | dry swales |
| Goldberg 1993 | 67.8 | 4.5 | - | 31.4 | 42-62 | -100 | grassed channel |
| Seattle Metro and Washington Department of Ecology 1992 | 60 | 45 | - | -25 | 2-16 | -25 | grassed channel |
| Seattle Metro and Washington Department of Ecology, 1992 | 83 | 29 | - | -25 | 46-73 | -25 | grassed channel |
| Wang et al., 1981 | 80 | - | - | - | 70-80 | - | dry swale |
| Dorman et al., 1989 | 98 | 18 | - | 45 | 37-81 | - | dry swale |
| Harper, 1988 | 87 | 83 | 84 | 80 | 88-90 | - | dry swale |
| Kercher et al., 1983 | 99 | 99 | 99 | 99 | 99 | - | dry swale |
| Harper, 1988. | 81 | 17 | 40 | 52 | 37-69 | - | wet swale |
| Koon, 1995 | 67 | 39 | - | 9 | -35 to 6 | - | wet swale |

Parking Lot Island Infiltration Areas

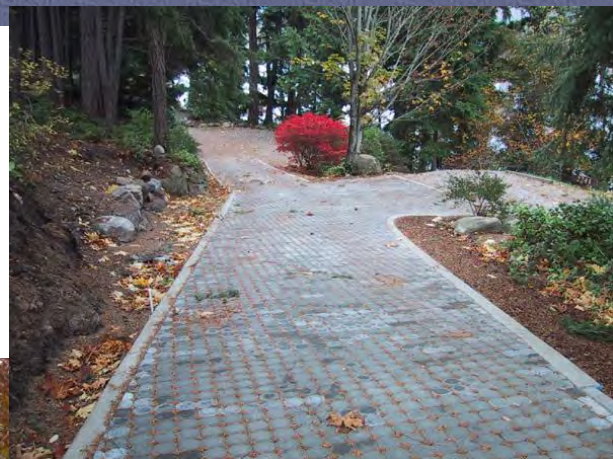


Rain Gardens



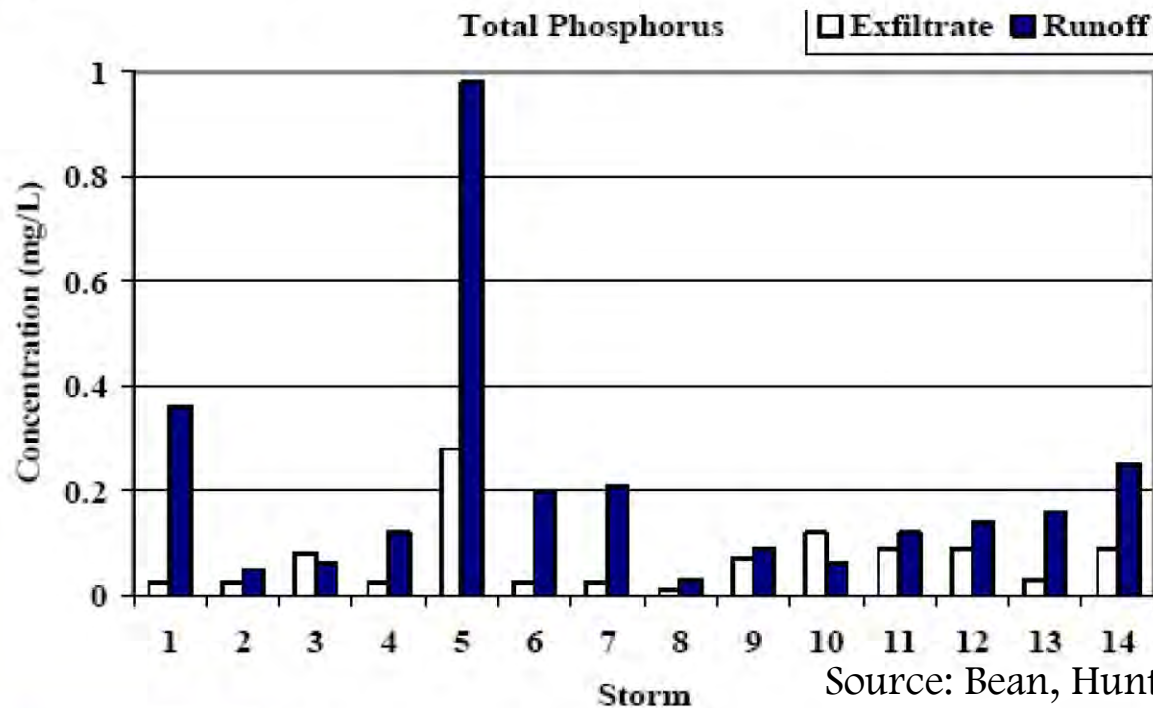
Sustainable Development

Permeable and Porous Pavements



Infiltration of Permeable Pavements

| Date | Rainfall Totals (cm) | Volume Attenuation % | Peak Attenuation % | Delay to Peak (hrs) |
|-------------|----------------------|----------------------|--------------------|---------------------|
| 7/22/2004 | 1.5 | 88 | 81 | 1.3 |
| 7/29/2004 | 1.6 | 53 | 44 | 1.5 |
| 8/5/2004 | 1.7 | 57 | 75 | 1.1 |
| Mean | 1.6 | 66 | 67 | 1.3 |



Source: Bean, Hunt & Bidelspach, 2005



Porous
Asphalt

Standard
Asphalt



Pervious Pavers: concrete blocks or grids

- Turfstone and Eco-Stone: Virtually all precip. infiltrated over 6 years; another study showed 72% reduction for Eco-Stone (Dietz 2007).
- Unilock pavers: No surface runoff for events measured up to 1 1/4"/hr.
- Plastic Grids: Virtually no runoff from 2 products.

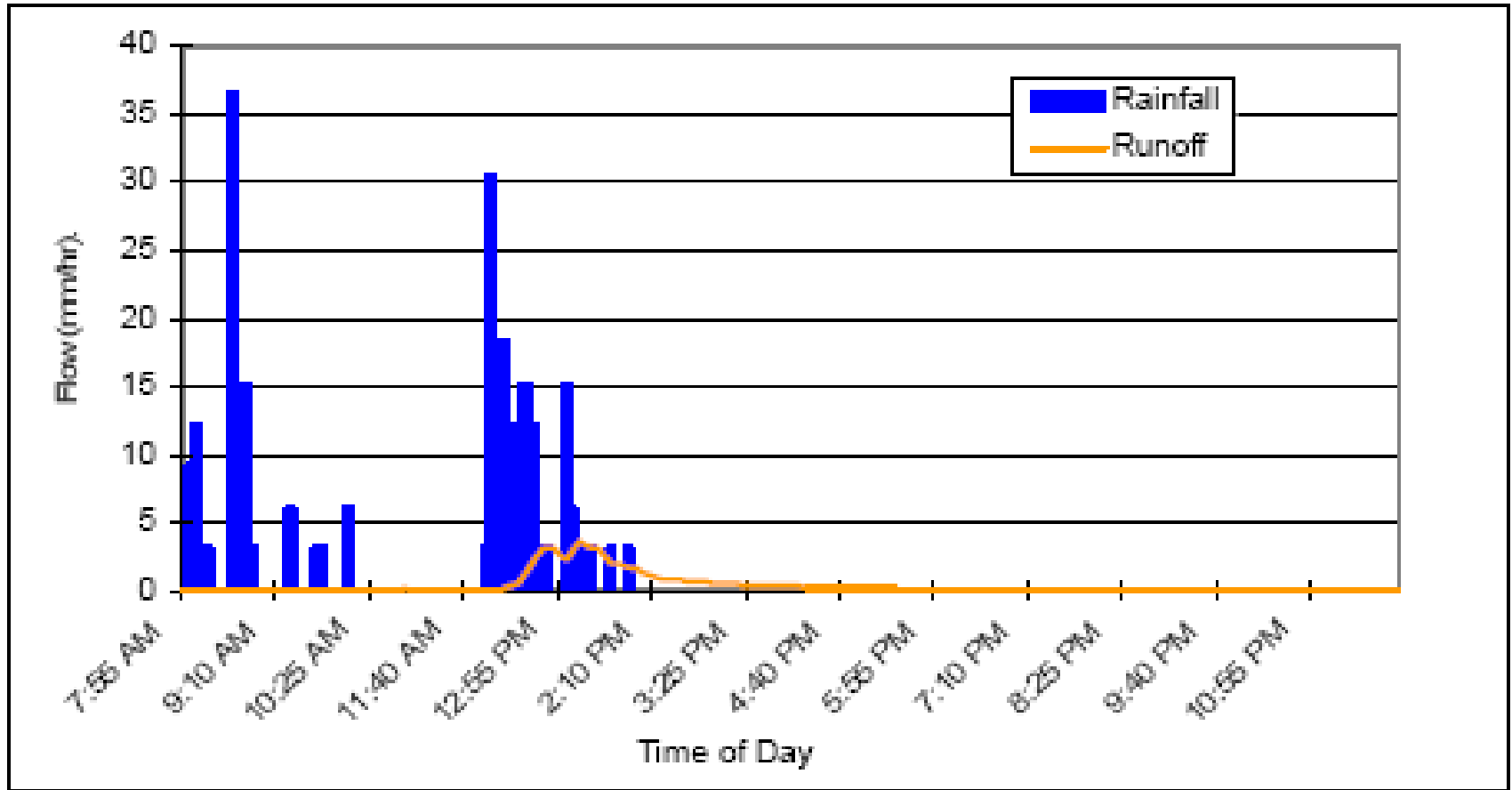
Source: EPA Office of Water, 2007

Runoff quantity and quality from driveways were monitored from water exiting slot drains.

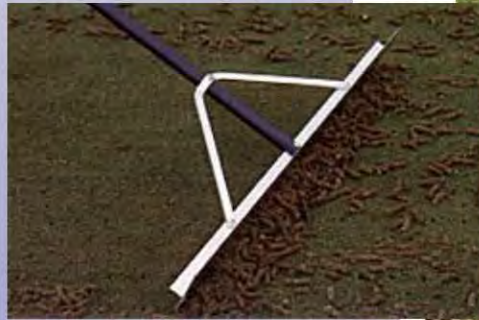
Green Roofs



Peak Flow Reduction of Green Roof Runoff



Soil Amendment & Structuring



Planters



Rainwater Harvesting & Use



Infill Development

- Sites already served by transportation and infrastructure
- Couple with site design practices such as green roofs to effectively manage stormwater



Innovative Parking

- Parking structures use less land;
- Reduce number of spaces, reduce perviousness:
 - Share parking
 - Use parking lifts
 - Use unpaved overflow lots



Street Design

- Connectivity to reduce car trip lengths
- Multiple modes of transportation
- Narrower roads/ less pavement
- Sidewalks to facilitate more walking



Tree & Canopy Programs

- Trees intercept, and evapotranspire significant amounts of water
- Trees filter pollutants
- Canopies shade and cool paved surfaces



Water Conservation

- High efficiency fixtures and appliances, e.g., low-flow toilets, urinals, showerheads, faucets;
- Recycle and reuse water of wastewater from sinks, kitchens, tubs, washing machines, and dishwaters for landscaping, flushing toilets, etc.;
- Waterless technologies, e.g., composting toilets, waterless urinals;
- Rain harvesting (rain barrels, cisterns)

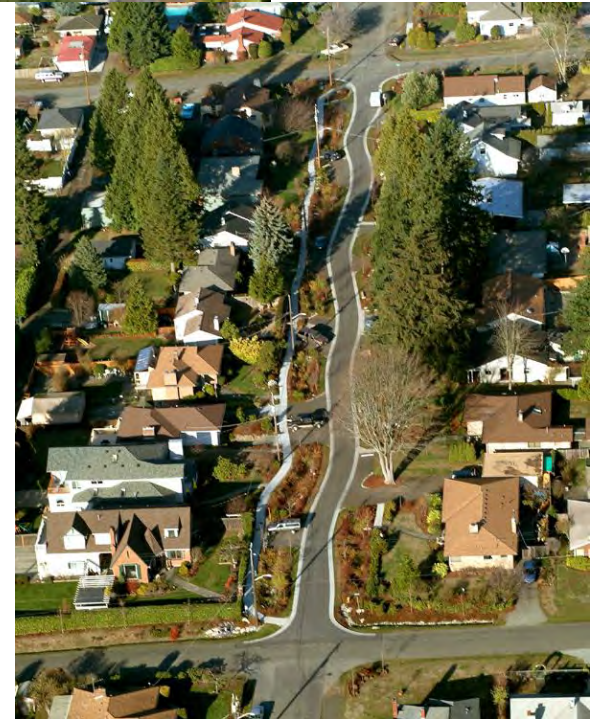


Integrate Practices on Neighborhood Scale

- Jordan Cove, Connecticut , monitored for 10 years: 17 traditional lots; 12 green infrastructure lots; swales, bioretention (rain gardens), pervious pavements
- High Point, Seattle: www.thehighpoint.com, replaces 716 dilapidated public housing units with 1600 units on 120 acres; large income range; swales, porous pavement, gravel, rain gardens, landscaped shaped for absorption, detention pond down-slope for “rare events”

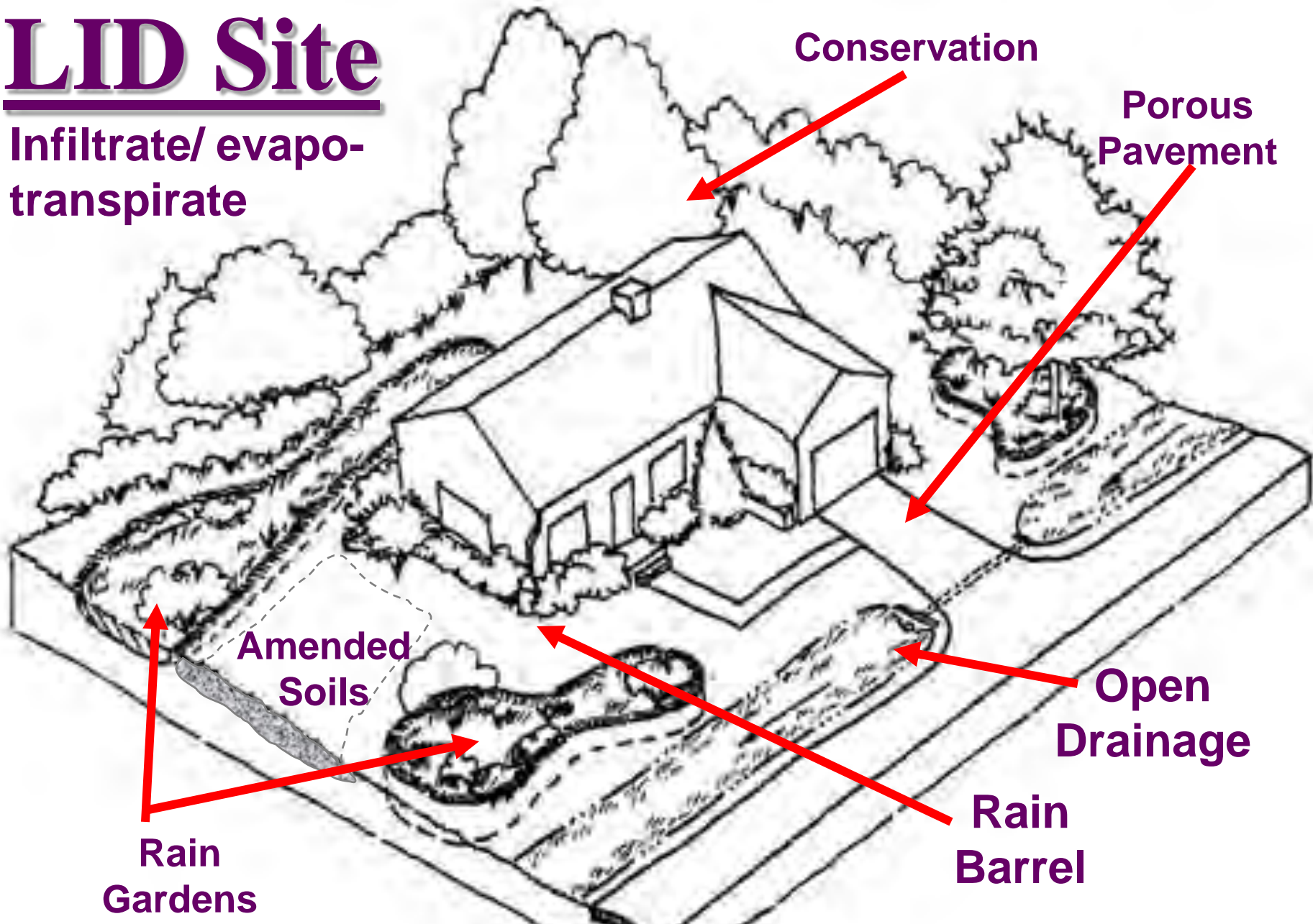
Seattle Street Edge Alternative (SEA) Street Project

- Reduced impervious surfaces to 11% less than traditional street
- Surface detention swales
- 100 evergreen trees
- 1100 shrubs
- Volume of stormwater discharge reduced 99%



LID Site

Infiltrate/ evapo-
transpirate



Cost Comparisons

Table 2. Summary of Cost Comparisons Between Conventional and LID Approaches^a

| Project | Conventional Development Cost | LID Cost | Cost Difference ^b | Percent Difference ^b |
|-----------------------------------|-------------------------------|-------------|------------------------------|---------------------------------|
| 2 nd Avenue SEA Street | \$868,803 | \$651,548 | \$217,255 | 25% |
| Auburn Hills | \$2,360,385 | \$1,598,989 | \$761,396 | 32% |
| Bellingham City Hall | \$27,600 | \$5,600 | \$22,000 | 80% |
| Bellingham Bloedel Donovan Park | \$52,800 | \$12,800 | \$40,000 | 76% |
| Gap Creek | \$4,620,600 | \$3,942,100 | \$678,500 | 15% |
| Garden Valley | \$324,400 | \$260,700 | \$63,700 | 20% |
| Kensington Estates | \$765,700 | \$1,502,900 | -\$737,200 | -96% |
| Laurel Springs | \$1,654,021 | \$1,149,552 | \$504,469 | 30% |
| Mill Creek ^c | \$12,510 | \$9,099 | \$3,411 | 27% |
| Prairie Glen | \$1,004,848 | \$599,536 | \$405,312 | 40% |
| Somerset | \$2,456,843 | \$1,671,461 | \$785,382 | 32% |
| Tellabs Corporate Campus | \$3,162,160 | \$2,700,650 | \$461,510 | 15% |

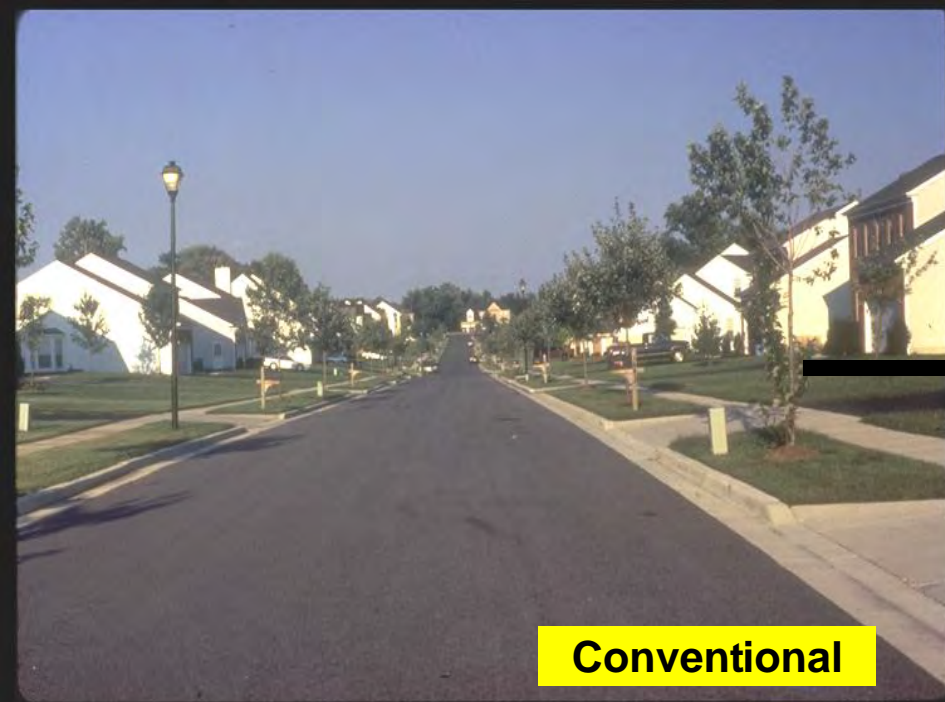
^a The Central Park Commercial Redesigns, Crown Street, Poplar Street Apartments, Prairie Crossing, Portland Downspout Disconnection, and Toronto Green Roofs study results do not lend themselves to display in the format of this table.

^b Negative values denote increased cost for the LID design over conventional development costs.

^c Mill Creek costs are reported on a per-lot basis.

LID is a System

- LID is a set of BMP's that are tailored to collectively achieve the runoff-reduction objective.
- E.g., (1) Disconnect downspouts, (2) store some runoff in a barrel or cistern, (3) infiltrate the remainder into a rain garden, & (4) use pervious asphalt in the driveway.



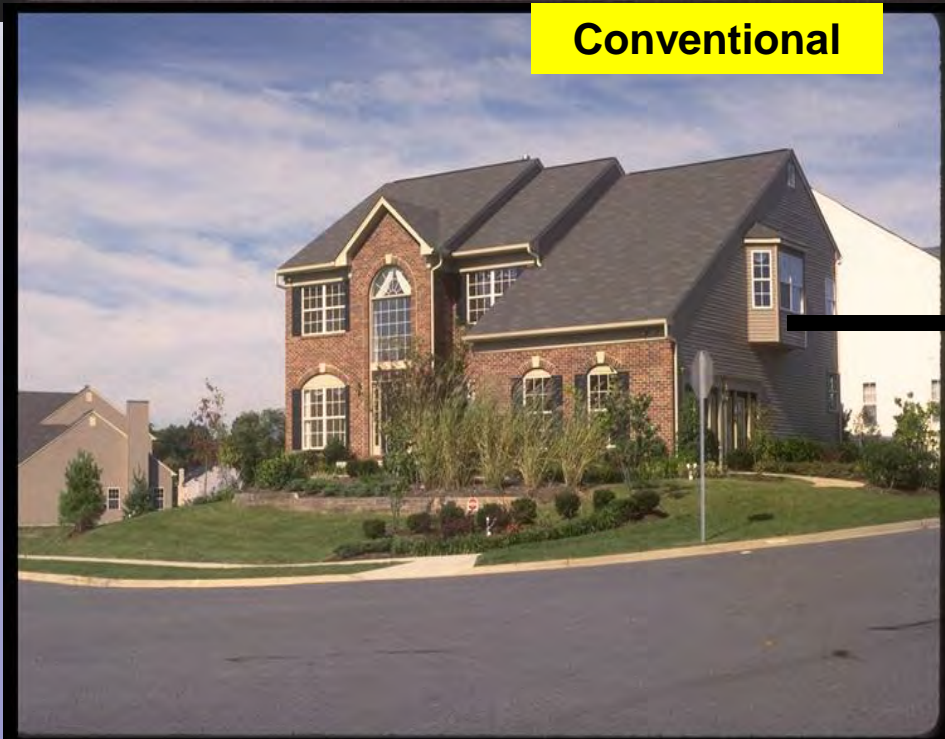
Conventional

Conventional



Low Impact

Functional Landscape Design



Energy Independence & Security Act of 2007

“Sec. 438. Storm Water Runoff Requirements for Federal Development Projects:

The sponsor of any development or redevelopment project involving a Federal facility with a footprint that exceeds 5,000 square feet shall use site planning, design, construction, and maintenance strategies for the property to maintain or restore, to the maximum extent technically feasible, the predevelopment hydrology of the property with regard to the temperature, rate, volume, and duration of flow.”

Clean Water Act Sec. 101

- **Chemical impairment** – sediment; low dissolved Oxygen; additional problems include temperature and nutrients
- **Physical impairment** – streambank erodes; bed fills with silt, and
- **Biological impairment** – depleted fish and macro-invertebrate populations; the habitat for spawning is compromised or absent
- Not **Fishable** – no fish!
- Not **Swimmable**– very low flow except when raining



Rain Gardens



May 7, 2009



MAY 25 2001

May 7, 2009

Source: EPA Office of Water, 2008

Sustainable Development

Scuppers into Stormwater Planter



May 7, 2009

Sustainable Development Source: EPA Office of Water, 2008







Cost-Saving Example

Pembroke Woods (Frederick County, MD)

- Eliminated curbs, gutters, sidewalks, 2 ponds.
- Narrower streets reduced imperviousness and reduced paving costs by 17 percent.
- Eliminating 2 SW ponds saved \$200K and added space for 2 developable lots (\$45K each).
- Saved \$160K of land clearing costs; & added 2.5 acres of open space, reducing 404 mitigation.

LID Cost-saving Ideas

- Disconnecting downspouts rapidly saved money for Flint, MI's SW/CSO programs:
 - Reduced flows across all precipitation events by 26%
 - cost recovered in 2 months.
- Portland is funding a huge downspout disconnection program (reducing CSO's by 4.2M cu. m. (=1 billion gallons) annually).

Portland's CSO Program Progress Report, 2006

- Combine street-edge programs with street traffic-calming programs (e.g., Portland).

"We've got to do things smarter throughout the Air Force. And this is one of those simple ways that we can conserve energy and save money."
Randy Hawke, Facilities Excellence Architect



Equipment is unloaded to construct a green roof at Peterson Air Force Base. (USAF, Steve Brady)

What are Benefits of LID?

- Positive impacts on stream hydrology and streambank structure
- Reduce pollutant discharge
- Connect to floodplain and reduce flooding
- Increased groundwater recharge
- Reduce energy consumption
- Reduced urban heat island impacts

Benefits of LID

- Aesthetics -- rain gardens and green roofs add beauty --
- Enhance property values
- Community benefits from green space
- Trees and green roofs benefit air quality by sequestering pollutants
- Green roofs last longer than traditional roofs, conserve natural resources

The Way Ahead from here...

- DoD is participating with EPA / Office of Water to develop flexible and site-specific technical Section 438 guidance on green infrastructure tools, practices, and approaches;
- EPA's Green Infrastructure "Strategy" has 7 categories: Research; Outreach & Communication; Tools; CWA Regulatory Support; Economic Viability & Funding; Demonstrations & Recognition; and Partnerships;
- Key Priority: Assembling and organizing data on LID effectiveness, costs, cost savings, and benefits to society and the environment.
- EPA is developing a library of good model ordinances as develop good info on model permit language for MS4 permits. We're providing tech assistance to several States.

Conclusion

- LID is not rocket science; runoff volume reduction can be estimated within reasonable range for rain barrels, cisterns, rain gardens, porous pavements, green roofs, trees, and for general reduction of impervious surfaces;
- A rapidly increasing pool of experience is verifying that LID works and is affordable;
- Sustainable development offers the opportunity to treat water as a resource – offering community benefits –

Resources

The Center for Watershed Protection website:

<http://www.cwp.org/>

Low Impact Development Center:

www.lowimpactdevelopment.org

LEED-ND Website's Stormwater Provision:

www.usgbc.org/ShowFile.aspx?DocumentID=2845, p. 115-17

EPA's Green Infrastructure website:

www.epa.gov/npdes/greeninfrastructure

EPA's NPS and LID Websites:

www.epa.gov/nps and www.epa.gov/nps/lid

An excellent commercial green roof website:

www.greenroofs.com

Wisconsin DNR Rain Garden Manual

www.dnr.state.wi.us/org/water/wm/nps/rg/index.htm

WERF Stormwater Whole Life Cost Model

More Resources

“The Economics of Low Impact Development: A Literature Review”

www.muddywaterwatch.org/images/Economics_of_LID.pdf

“Green Values Stormwater Toolbox” LID Calculator

<http://greenvalues.cnt.org>

“Sustainable Raindrops”, by Hudson Riverkeeper

http://www.riverkeeper.org/campaign.php/pollution/the_facts/986

“Reducing Stormwater Costs through LID Strategies and Practices”

www.epa.gov/nps/lid

“Better Site Design”, by Center for Watershed Protection

www.cwp.org

Abby Hall’s LID Slides (currently includes 391 slides from 11 cities)

<http://picasaweb.google.com/buildgreeninfrastructure>

Cathy Broad
Environmental Protection Specialist
Washington Headquarters Service
Engineering & Technical Services Division
Safety & Environmental Management
(703) 614-3185 office

until May 8th catherine.broad@whs.mil
as of May 11th catherine.broad@da.usda.gov