

Operational Range Assessment Program (ORAP) Phase II Overview

Andrea Graham

USACE, Baltimore District

andrea.a.graham@usace.army.mil



Solutions for Life™

Report Documentation Page

Form Approved
OMB No. 0704-0188

Public reporting burden for the collection of information is estimated to average 1 hour per response, including the time for reviewing instructions, searching existing data sources, gathering and maintaining the data needed, and completing and reviewing the collection of information. Send comments regarding this burden estimate or any other aspect of this collection of information, including suggestions for reducing this burden, to Washington Headquarters Services, Directorate for Information Operations and Reports, 1215 Jefferson Davis Highway, Suite 1204, Arlington VA 22202-4302. Respondents should be aware that notwithstanding any other provision of law, no person shall be subject to a penalty for failing to comply with a collection of information if it does not display a currently valid OMB control number.

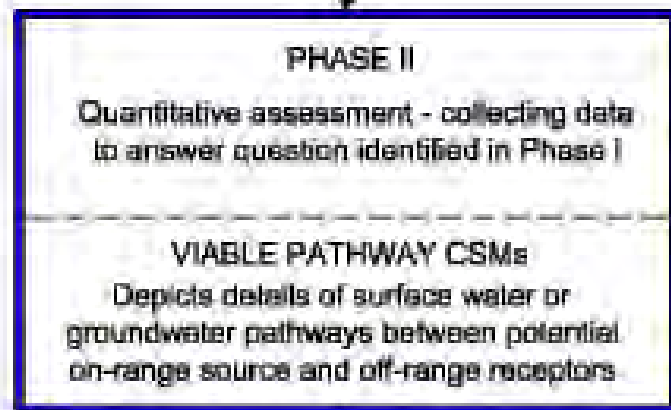
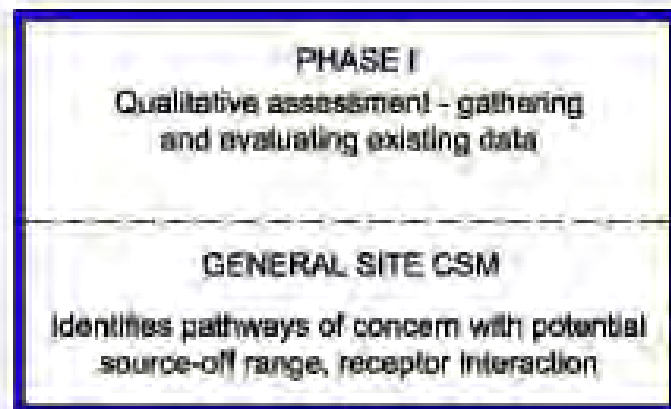
1. REPORT DATE MAY 2009	2. REPORT TYPE	3. DATES COVERED 00-00-2009 to 00-00-2009		
4. TITLE AND SUBTITLE Operational Range Assessment Program (ORAP) Phase II Overview		5a. CONTRACT NUMBER		
		5b. GRANT NUMBER		
		5c. PROGRAM ELEMENT NUMBER		
6. AUTHOR(S)		5d. PROJECT NUMBER		
		5e. TASK NUMBER		
		5f. WORK UNIT NUMBER		
7. PERFORMING ORGANIZATION NAME(S) AND ADDRESS(ES) US Army Corps of Engineers, Baltimore District ,10 South Howard Street, Baltimore, MD, 21201		8. PERFORMING ORGANIZATION REPORT NUMBER		
9. SPONSORING/MONITORING AGENCY NAME(S) AND ADDRESS(ES)		10. SPONSOR/MONITOR'S ACRONYM(S)		
		11. SPONSOR/MONITOR'S REPORT NUMBER(S)		
12. DISTRIBUTION/AVAILABILITY STATEMENT Approved for public release; distribution unlimited				
13. SUPPLEMENTARY NOTES Presented at the NDIA Environment, Energy Security & Sustainability (E2S2) Symposium & Exhibition held 4-7 May 2009 in Denver, CO.				
14. ABSTRACT				
15. SUBJECT TERMS				
16. SECURITY CLASSIFICATION OF:			17. LIMITATION OF ABSTRACT Same as Report (SAR)	
a. REPORT unclassified	b. ABSTRACT unclassified	c. THIS PAGE unclassified		
			18. NUMBER OF PAGES 20	19a. NAME OF RESPONSIBLE PERSON

Army Environmental Military Munitions Programs

- ORAP is part of the Sustainable Range Program (SRP), which also includes Operational Range Inventory Sustainment (ORIS)
 - ORAP is a comprehensive effort to identify and evaluate off-range munitions constituents (MC) impacts from operational ranges (as defined in TC 25-8), and to ensure continuity of training missions at these ranges
 - SRP Tenet: Information Excellence – Ensure the Army has the best available data to support operational ranges
- MMRP is a program element of DERP (September 2001)
 - Documents MC impacts from other than operational military ranges and munitions sites
 - MMRP includes FUDS, BRAC, and CTT sites

Coordination efforts are underway between the two programs to reduce burden to installations



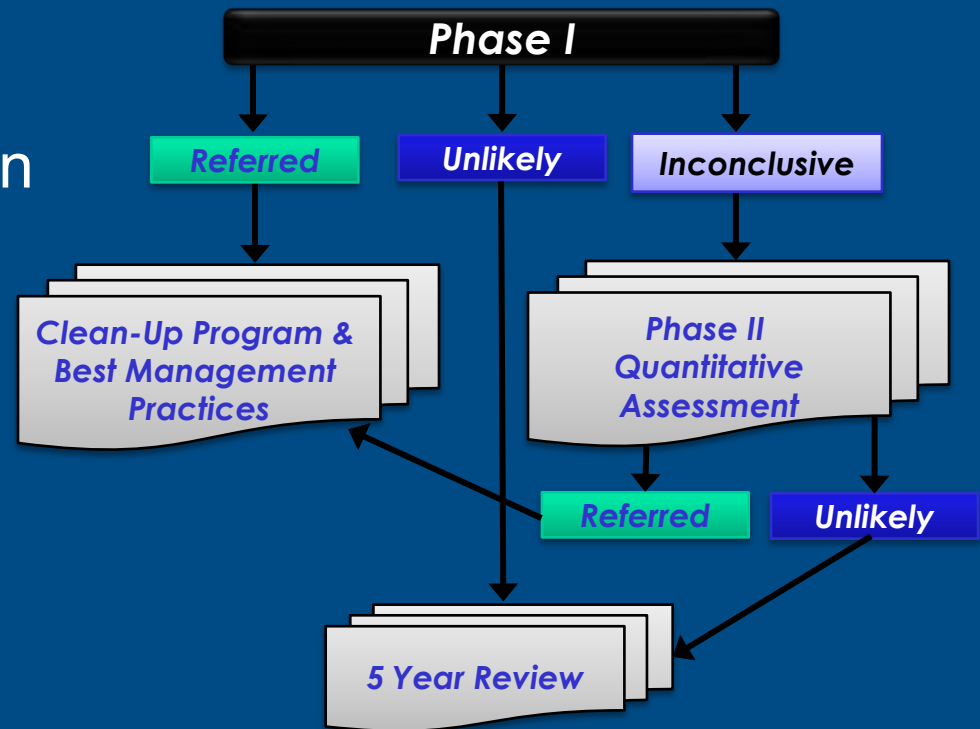


This leads to sampling in pathway between receptor and potential source to determine if off-range risk is really present.

ORAP Assessments use a phased approach and are based on Source – Receptor Interactions

Phase II Assessment Overview

- Phase II Assessments will occur where Phase I Assessments indicate *Inconclusive* categorization
- Phase II is planned to start in FY10
- Sample and analyze migration pathway media
 - Use accepted processes to determine the number and locations of samples
 - Analyze for MCOC using approved analytical methods



Phase II Quantitative Assessment – Pilot Studies

- USACHPPM's Recommended Phase II Approach
 - Develop installation-specific HSPs
 - Develop DQOs using EPA guidance
 - Develop QAPPs using UFP-QAPP
 - Address SW and GW pathways only
 - Develop detailed Viable Pathway CSMs (discussion and illustration)
 - Incorporate non-range influences and degradation
 - Select effective sample locations
 - GW sampling at/near sources (not on Impact Areas) or exposure points
 - SW sampling
 - Account for temporal variability (wet/dry seasons, high/low flow events)
 - Use SW decision flow chart

Phase II Quantitative Assessment – Pilot Studies

- USACHPPM's Recommended Phase II Approach (continued)
 - Ecological Risk Assessments – aquatic receptors only
 - Background and 95% UCL of mean results vs. screening levels comparison
 - Benthic macroinvertebrate surveys – false Positive / Negative
 - Human Health Risk Evaluations
 - Initial data screening – direct comparison to screening levels
 - Quantitative data screening – determine need for HHRA
 - Installation-specific Phase II reports categorizing each formerly Inconclusive range as either Unlikely or Referred
 - Referred categorization must be based on Risk Assessment results – not just on Phase II data

Phase II ORAP Roles & Responsibilities

- ISE has overall Army responsibility for Range Assessment Program including funding and guidance
- G3 provides HQDA level operator input
- AEC and NGB are the Program Managers for Phase II Assessments with responsibility for:
 - Upward and downward reporting
 - Disburse funding
 - Implement protocol as guidance
 - Data repository
 - Scheduling
- USACHPPM provides technical oversight
- Contract mechanism for Phase II Assessments will consist of AE IDQ and Multiple Award Military Munitions contracts



ORAP Phase II Pilot USAG Fort Jackson / McCrady Training Center

Rhonda Stone
Malcolm Pirnie, Inc.
rstone@pirnie.com

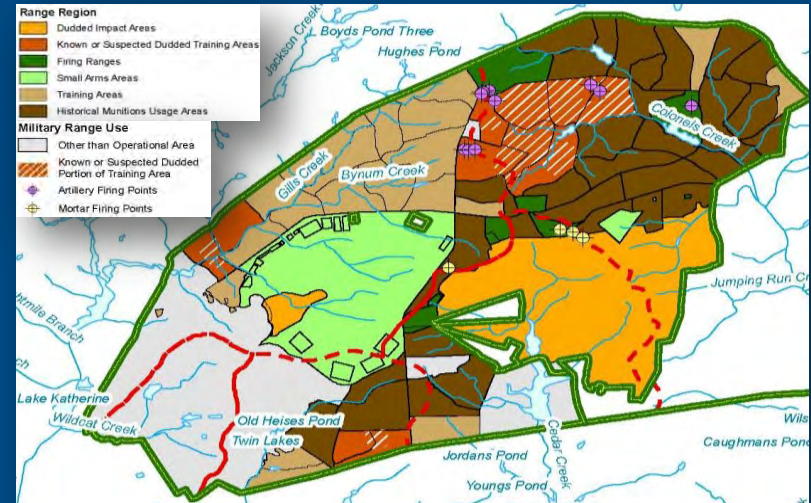


Solutions for Life™

Installation Overview / Fast Facts

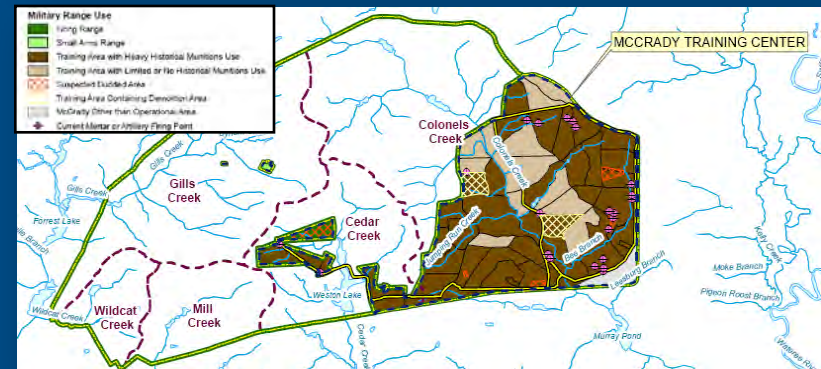
Fort Jackson -

- Army owned/operated 36,971 acres (+15,267 acres operated by SCARNG)
- Used 1917 to present for Basic & Advanced Infantry Training
- 29,475 operational acres / 16,471 categorized as Inconclusive
- 104 operational ranges / 51 categorized as Inconclusive



McCrary Training Center -

- Army owned/NGB operated
- 15,267 acres in total
- Used by SCARNG since 1943
- 14,895 operational acres / 12,243 categorized as Inconclusive
- 62 operational ranges / 48 categorized as Inconclusive

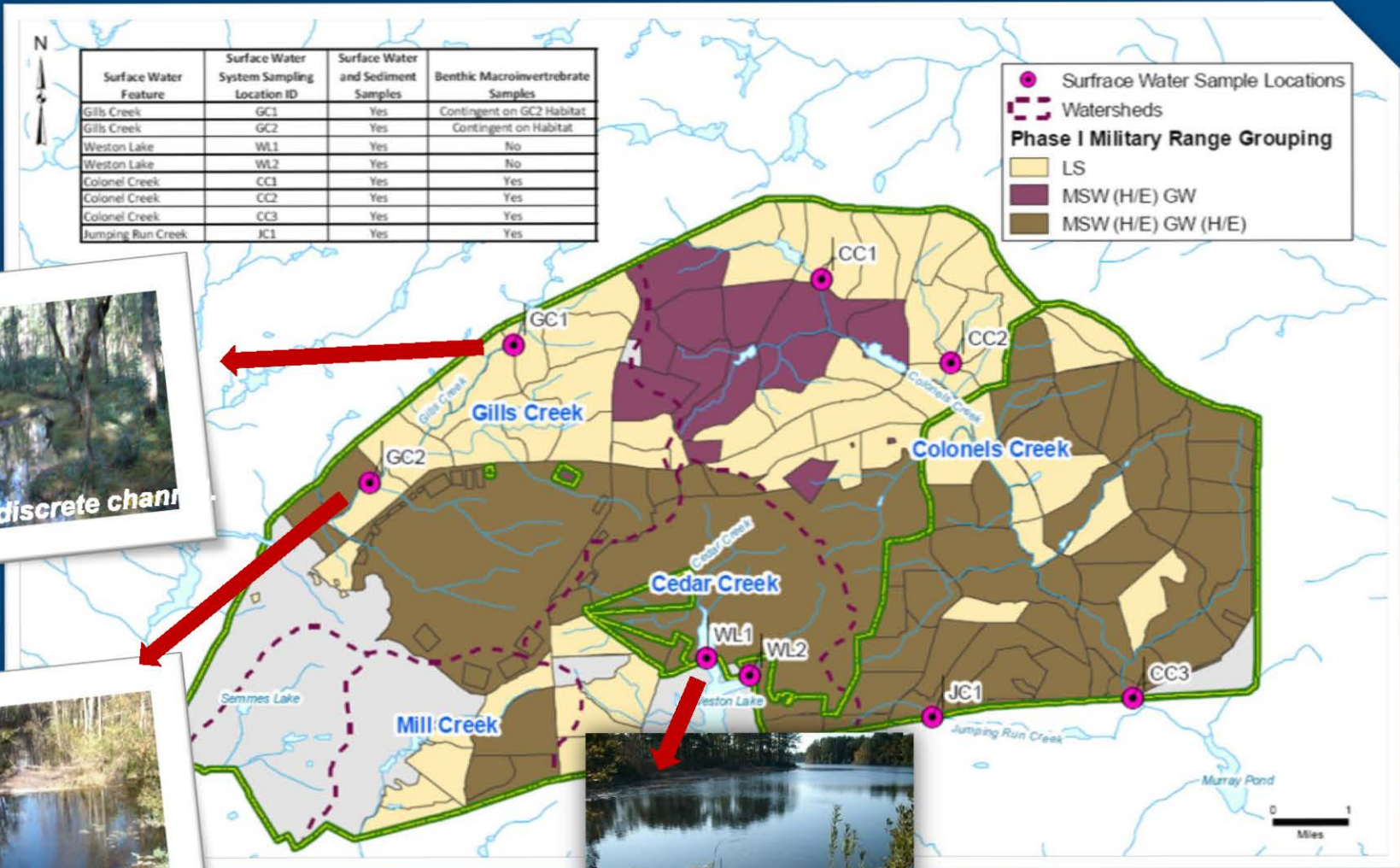


Combined Installation Phase II

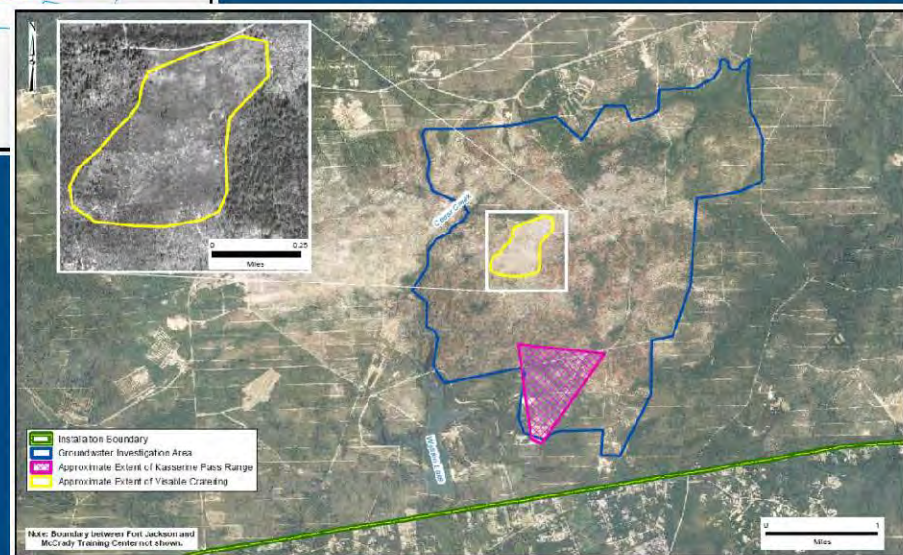
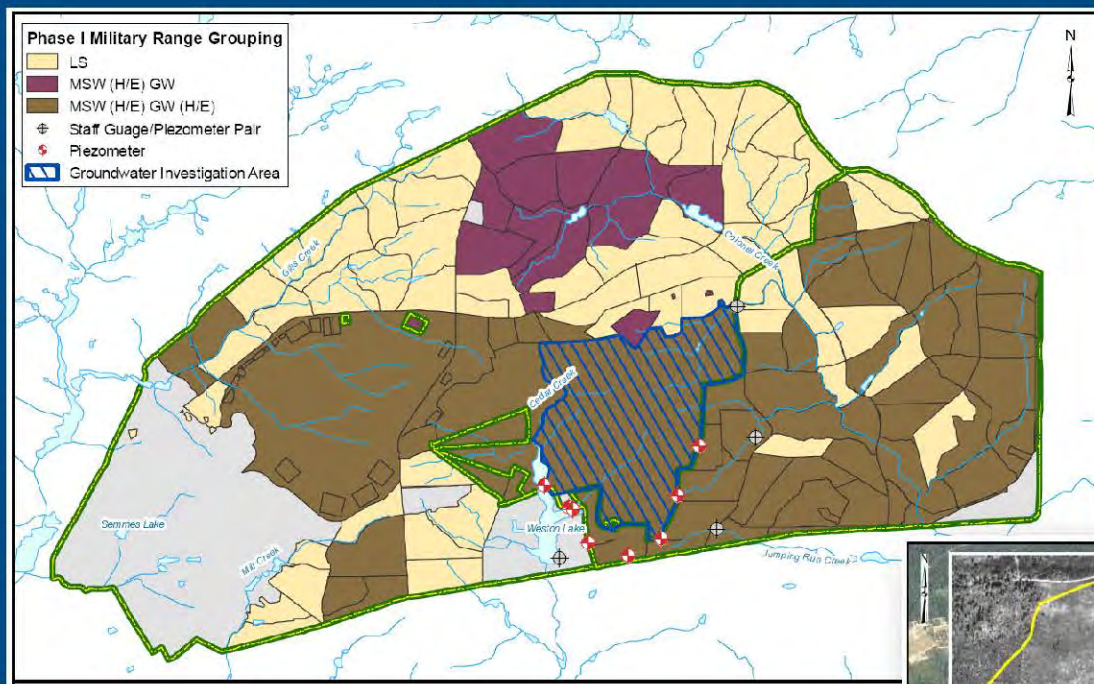
Pilot Study Advantages

- Able to obtain additional surface water/sediment data for both installations with minimal added effort - better determine if a source area is up-stream within each watershed
- Same up-stream (background) and down-stream surface water/sediment sample locations used for both installations - additional McCrady TC only locations no longer needed
- Able to add piezometers to better determine groundwater direction, depth, and subsurface geology (= better groundwater sample location siting)
- Additional down-gradient groundwater sample locations can be used for both installations
- Provide information on potential impacts migrating off the combined installation boundary rather than just the Fort Jackson or McCrady TC boundary
- Combined sampling effort decreases impacts to training activities

Surface Water Pathway Sampling Locations



Groundwater Pathway Sampling Locations - Multi-Phase Groundwater Approach



Pilot Technologies

Glacier® Portable Refrigerated Sampler

X-50 Mobile XRF



Specifications:

- 50kV, 200µA x-ray tube for up to 25X power over a handheld instrument
- High resolution Si PIN diode detector that delivers < 190 eV resolution (FWHM Mn K-alpha line) in a proven, field-rugged package
- Rugged, injection molded, sealed carrying case and sealed test platform
- Powerful Pentium processor, embedded XP and sealed, field-hardened color touchscreen
- Multiple analysis modes including Fundamental Parameters, Compton Normalization, Empirical Calibration models, Spectral Matching
- 6-position primary beam filters for optimal performance across the periodic table
- Sample platform with interlocked testing cover
- AC Power or 3 hours Li-ion battery power with optional battery pack (typical duty cycles)
- Total weight 20 lbs/9 kg
- Dimensions (approx.) 12" x 13" x 8" in. / 30 x 33 x 20 cm
- Sample chamber dimensions 12" x 8" x 5" / 30 x 20 x 12.5 cm

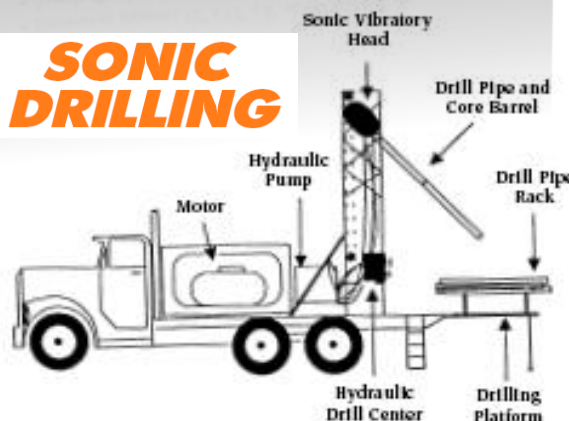


Active cooling in a portable sampler!

Isco's Glacier® Sampler combines the small size, light weight, and mobility of a portable with an exclusive active temperature control system. Its revolutionary design gives you the best of all worlds: easy transport, quick setup, and accurate sample preservation – without reliance on ice or utility power!

Glacier can be powered by 12V DC or AC line voltage. In the field, Glacier delivers 48 hours or more of refrigeration from a 12 volt deep cycle battery. Its power-saving cooling system stands by until the first sample is drawn. Glacier can wait patiently for days or weeks to collect event-triggered samples, and then preserve them until a convenient pickup time.

SONIC DRILLING



Pilot Schedule

Activity	Anticipated Schedule
Kick-off Meeting	September 2008
Reconnaissance Walk/Coordination Meeting	October 2008
Work Plan Preparation	October 2008 - February 2009
Review Period	February 2009
Final Work Plan (with UFP-QAPP)	March 2009
Field Sampling	March 2009 - July 2009
Data Validation / Quantitative Assessment Report Preparation	May 2009 - December 2009
Review Period	December 2009
Final Quantitative Assessment Report	January 2010



ORAP Phase II Pilot

Fort A.P. Hill

Dave Mercadante

EA Engineering, Science, and Technology

dmercadante@eaest.com



Solutions for Life™

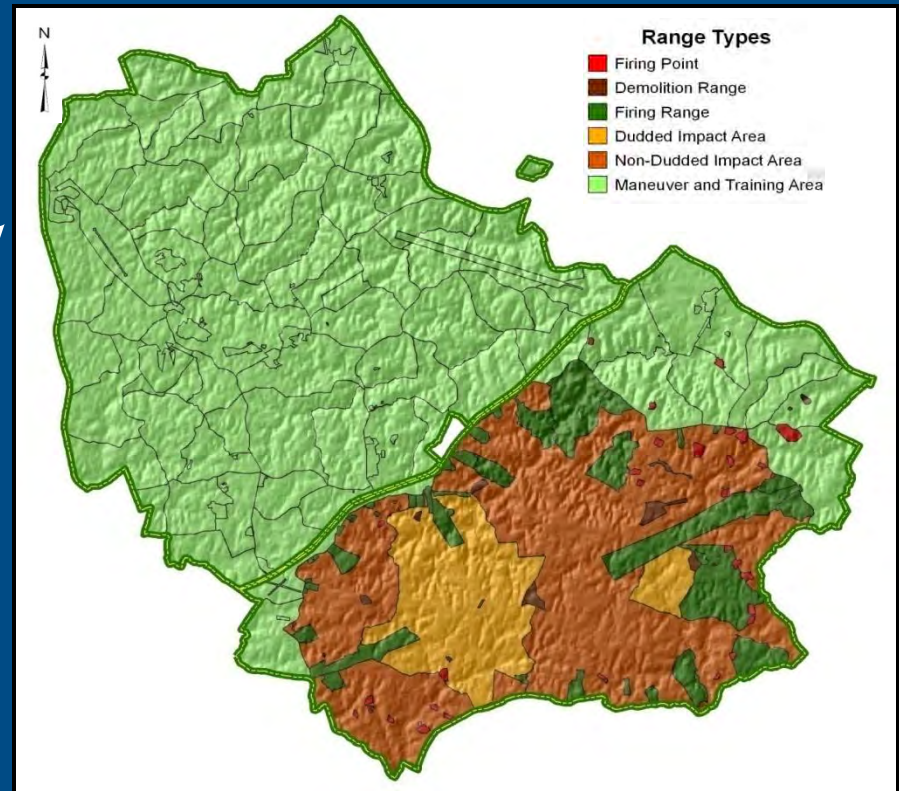
Installation Overview / Fast Facts

Fort A.P. Hill, Virginia

- *U.S. Army owned/operated*
- *Active since 1941*
- *228 operational ranges*
- *74,262 acres*

Phase I Conclusions

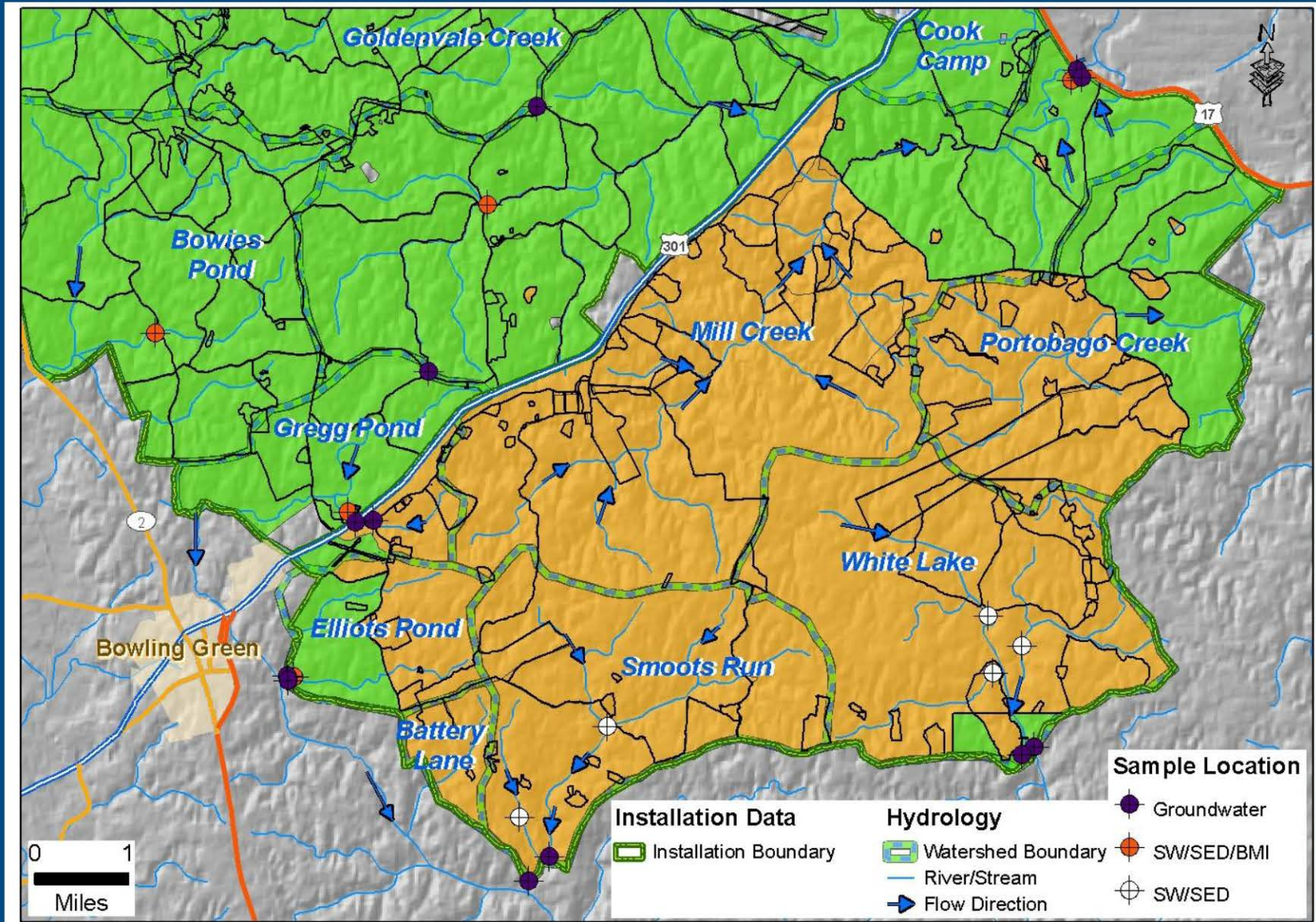
- *Unlikely - 128 operational ranges, 47,641 acres*
- *Inconclusive - 100 operational ranges, 26,621 acres*



Piloting the Protocol

- The identified sources, pathways, and receptors at installation allow full testing of Technical Protocol
 - Training history means typical programmatic constituents potentially present on site
 - Main programmatic transport pathways identified from multiple source types
 - Well defined surface water flow and discharge points for multi-seasonal sampling
 - Groundwater sampling at both source discharge and potential exposure points
 - Habitat conditions present for testing application of benthic macroinvertebrate dip net sampling
- Site location allows comparisons of protocol application between Fort A.P. Hill and USACHPPM pilot site in Virginia
- Site is easily accessible for evaluation by USAEC, USACHPPM, and USACE program managers and technical oversight

Pathway Conceptual Site Model



Proving the Concept

- Application of Worst Case Scenario application
 - Similarities in models of source, pathway, and receptor between watersheds allow for a focused approach
- Establishing a baseline for storm event sampling
 - Installation of rain gauges, transducers and barometers in multiple watersheds to identify parameters necessary for true storm transport
- Comparison of multi-seasonal benthic sampling results
 - Measure application of a single season approach
 - Measure application of using historical benthic data
 - Assess value of AVS-SEM analysis
- Cost-Benefit analysis of USEPA Method 1638



Project Schedule – Fort A.P. Hill

Activity	Anticipated Schedule
Kick-off Meeting	September 2008
Reconnaissance Walk/Coordination Meeting	October 2008
Work Plan Preparation	October 2008 - February 2009
Review Period	February 2009
Final Work Plan (with UFP-QAPP)	March 2009
Field Sampling	March 2009 - July 2009
Data Validation / Quantitative Assessment Report Preparation	May 2009 - December 2009
Review Period	December 2009
Final Quantitative Assessment Report	January 2010