

# MINOS Timing and GPS Precise Point Positioning

Stephen Mitchell  
US Naval Observatory  
[stephen.mitchell@usno.navy.mil](mailto:stephen.mitchell@usno.navy.mil)

for the International Workshop on Accelerator  
Alignment 2012 in Batavia, IL



# Report Documentation Page

*Form Approved  
OMB No. 0704-0188*

Public reporting burden for the collection of information is estimated to average 1 hour per response, including the time for reviewing instructions, searching existing data sources, gathering and maintaining the data needed, and completing and reviewing the collection of information. Send comments regarding this burden estimate or any other aspect of this collection of information, including suggestions for reducing this burden, to Washington Headquarters Services, Directorate for Information Operations and Reports, 1215 Jefferson Davis Highway, Suite 1204, Arlington VA 22202-4302. Respondents should be aware that notwithstanding any other provision of law, no person shall be subject to a penalty for failing to comply with a collection of information if it does not display a currently valid OMB control number.

1. REPORT DATE <b>2012</b>	2. REPORT TYPE	3. DATES COVERED <b>00-00-2012 to 00-00-2012</b>			
4. TITLE AND SUBTITLE <b>MINOS Timing and GPS Precise Point Positioning</b>		5a. CONTRACT NUMBER			
		5b. GRANT NUMBER			
		5c. PROGRAM ELEMENT NUMBER			
6. AUTHOR(S)		5d. PROJECT NUMBER			
		5e. TASK NUMBER			
		5f. WORK UNIT NUMBER			
7. PERFORMING ORGANIZATION NAME(S) AND ADDRESS(ES) <b>US Naval Observatory,,3450 Massachusetts Avenue, N.W.,,Washington,,DC, 20392</b>		8. PERFORMING ORGANIZATION REPORT NUMBER			
9. SPONSORING/MONITORING AGENCY NAME(S) AND ADDRESS(ES)		10. SPONSOR/MONITOR'S ACRONYM(S)			
		11. SPONSOR/MONITOR'S REPORT NUMBER(S)			
12. DISTRIBUTION/AVAILABILITY STATEMENT <b>Approved for public release; distribution unlimited</b>					
13. SUPPLEMENTARY NOTES <b>International Workshop on Accelerator Alignment 2012 in Batavia, IL</b>					
14. ABSTRACT					
15. SUBJECT TERMS					
16. SECURITY CLASSIFICATION OF:			17. LIMITATION OF ABSTRACT	18. NUMBER OF PAGES	19a. NAME OF RESPONSIBLE PERSON
a. REPORT <b>unclassified</b>	b. ABSTRACT <b>unclassified</b>	c. THIS PAGE <b>unclassified</b>	<b>Same as Report (SAR)</b>	<b>48</b>	

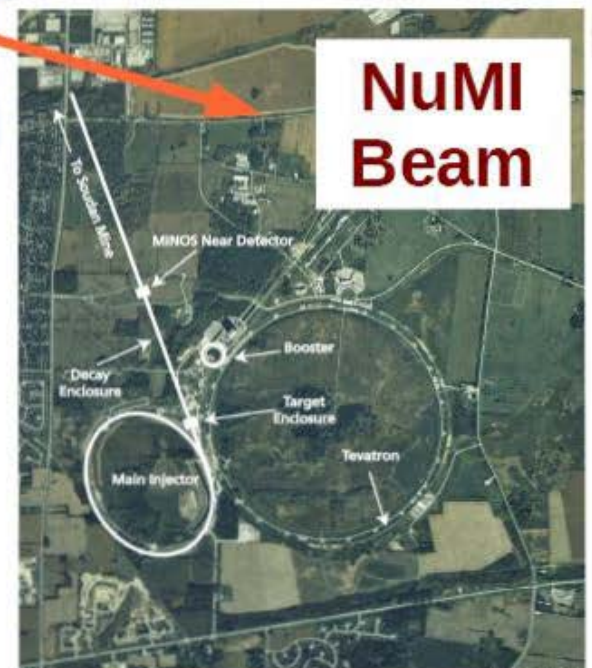
# The MINOS Experiment



Detectors consist of alternating layers of steel plates and scintillator strips in a  $\sim 1.3$  T toroidal magnetic field



735 km  
baseline



A Joint USNO-NIST Collaboration

# MINOS TIMING



# Minos Timing Spec

- Neutrinos created in bunches separated by 19 ns
- ~ 1 neutrino/day detected in Soudan Mine
  - 2 milliseconds travel time
- Must know which bunch created the observed neutrino
- Bunches are about 6 ns wide
  - To become 3.5 ns wide after planned upgrade in 2013
- Therefore want 1 ns RMS **\*\*ALWAYS\*\***



# What Kind of Clocks for 1 ns spec?

- Rubidium
- Standard Performance Cesium
- High Performance Cesium
- Maser



# Considerations

- Stability
- Cost
- Environmental requirements
- Reliability
- Delivery time
  - Fermilab ordering latency <2 weeks!



# Time Transfer Options

- GPS
  - Direct access (code) - too noisy
  - Precise Point Positioning (PPP)
    - Carrier Phase
    - Best way for day-to-day
    - NIST has supplied 6 NovAtel receivers
- TWSTT – Important for calibration
  - USNO has a specially designed SUV
- Fibers
  - IEEE1588 or pure tone with out-of-band calibration
  - No low-cost Fermilab to Soudan Mine connections known
  - Not yet tested for operational time transfer

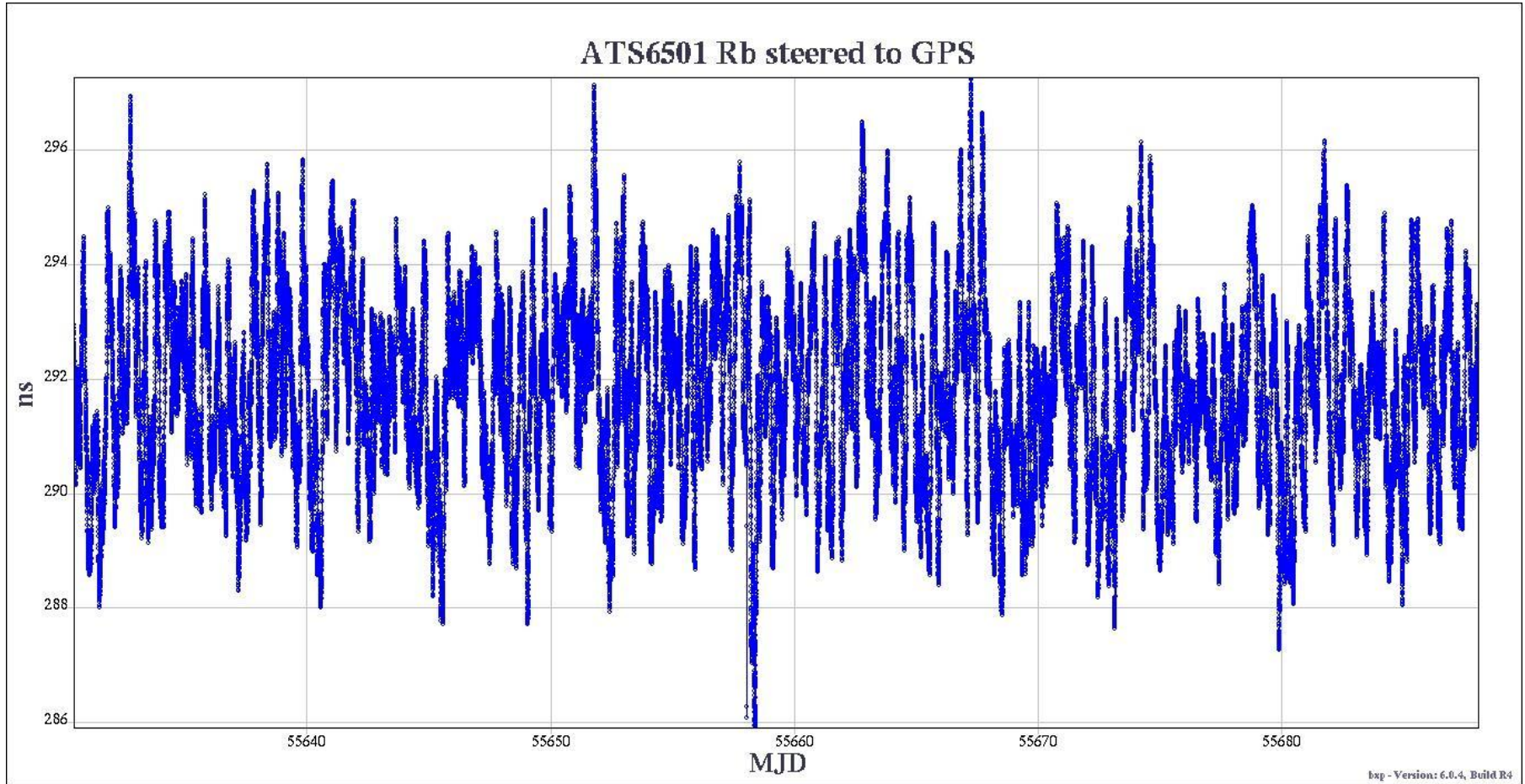


# Clock Options

- High-Performance Cesiums
  - A good cesium on a bad day varies 5 ns (2-sigma)
  - Cost ~ \$70K each
  - Tube Warranty: 5 years
  - Short-term stabilities ~ square root( $\tau$ )
    - In one hour, the two sigma time deviation is ~ 1 ns
- Standard Performance Cesiums
  - 2-3 times noisier than high performance units
  - 12 year warranty
- Rubidiums
  - Super-fancy: Fiber connections & GPS-disciplined, \$20K
  - Excellent: GPS disciplined rubidiums \$5K-10K
  - Good: free-running rubidiums: \$2-5K

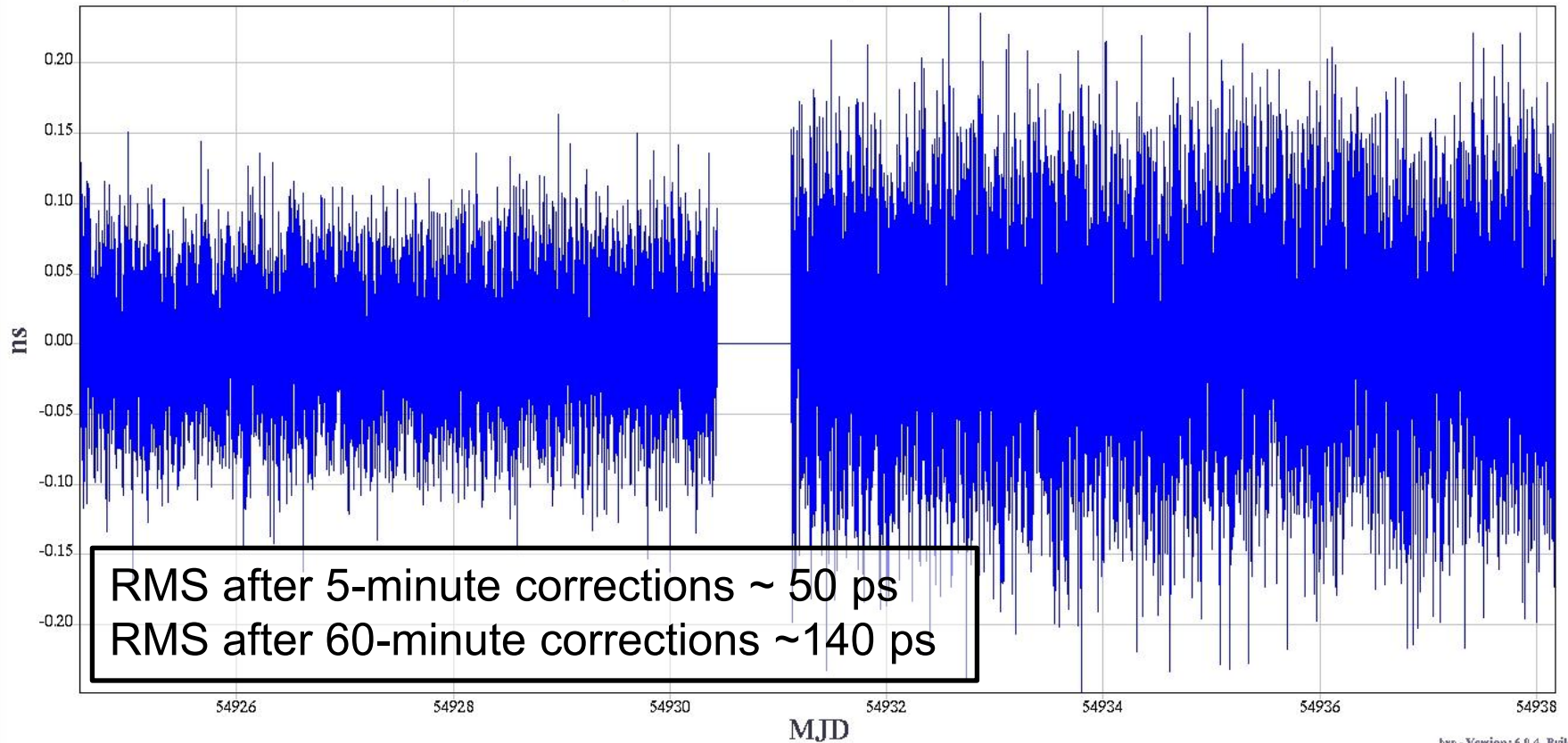


# GPS-Disciplined Rubidium RMS=1.6 ns



# Undisciplined ATS6051 corrected with PPP

Undisciplined Rb (from ATS6501) brute-force corrected to PPP



# Clock and Time Transfer Conclusions

- Rubidiums corrected with PPP data will meet specs
- But standard-performance cesiums have benefits
  - Longer holdover time
  - Variations less likely to cause numerical problems
  - They are more temperature-stable
    - Very important for upstairs/downstairs calibrations
  - Will give more confidence politically
  - USNO has loaned two for free



# Upstairs/Downstairs

- Fiber tempco  $\sim 15$  ps/degC/Km (manufacturer specs)
  - Tempcos may be much higher when jacketed
  - Adjacent fibers experience temperature offsets
  - Diurnal = 30 ps for 100 m \* 20 degC (assumed variation)
  - Coax  $\leftrightarrow$  Fiber modules have tempcos
- Round-trip correction desirable
- Separate fiber paths for 1-pps and 10 MHz
- USNO plan has redundant uplinks
  - Link calibration can be done by switching components



# At The Far Detector

## SOUDAN UNDERGROUND LABORATORY



A Brief Overview

# GPS PRECISE POINT POSITIONING



# What is GPS PPP?

- GPS PPP is a way to use precise ephemerides published by the International GNSS Service (IGS) along with code and carrier phase GPS measurements to compute a precise solution from a single GPS receiver
- Many additional physical effects have to be modeled to achieve a precise, day-to-day repeatable solution



# Differences from CORS

- A precise position and timing solution can be computed from a single receiver
- Almost always used after-the-fact
  - Experiments are being conducted on real-time PPP, but the solution takes longer to converge than double-differencing (~30 minutes)
- Many physical phenomena which cancel when double-differencing must be modeled or measured
- Additional error sources such as satellite phase center variations and total group delay differences in satellite and user equipment must be included
- Dependent on IGS orbit and clock products
- Time transfer is possible on much longer baselines!



# GNSS Code and Phase

- Two range measurement types in GNSS
- Pseudorange
  - The code measurement
  - Delivered in “chips” at  $1.023 \times 10^6$  chips/s for L1 C/A
  - 10x that for L2 P(Y) codes
  - Contains a timestamp → is “coded”, hence code
  - Susceptible to multipath interference



# GNSS Code and Phase

- Two range measurement types in GNSS
- Carrier phase
  - Phase measurement
  - Not timestamped
  - Delivered at  $1,575.42 \times 10^6$  Hz for L1,  $1227.6 \times 10^6$  Hz for L2
  - An order of magnitude (or more) greater precision and multipath resistance!
  - An integer ambiguity exists to relate the code to the carrier, allowing the carrier measurement to be used
    - PPP estimates this ambiguity



# PPP Day Boundary Discontinuities

- PPP estimates the ambiguity between the code and the carrier by averaging the corrected code to the carrier
- Code is noisy, the average is not constant day-to-day
  - Different processing techniques can make up for this, such as processing multiple days at a time
- These result in day-boundary discontinuities in PPP solutions



# Physical Phenomena

- Solid-earth tides
  - The motion of the Earth around the Sun and the Moon around the Earth also causes motion of the solid earth
  - These motions are very smooth and easy to calculate
  - Can cause diurnals of more than 20 cm (almost 60 cm in Boulder)
- Ocean loading
  - Much like solid-earth tides, the tidal cycle of the ocean can influence a PPP solution, particularly at sites close to the ocean
  - A particularly dramatic location is Cornwall, England, which can move approximately 14 cm in 6 hours!
- Ionospheric delay
  - Can be measured directly with a dual-frequency receiver
- Tropospheric delay
  - Can either be provided or modeled
  - In dual-frequency PPP, the ability to model the troposphere is equivalent to using a measured solution



# Additional Error Sources

- Total Group Delay variation among GPS satellites
  - C1→P1 biases: needed for receivers that do not produce a P1 measurement, such as the NovAtel receivers used in the MINOS experiment
  - L1→L2 biases: broadcast TGD value has a noticeable quantization error
- Satellite and User antenna phase center variations
- Satellite clock and position
  - Broadcast messages have a quantization error and become degraded as time passes from uploading



# IGS Products

- Precise orbit and clock products
  - Corrects satellite position and clock errors
- Antenna corrections
  - Antenna phase center offsets for GPS/GLONASS satellites and for many GPS antennas



Performance examples of GPS PPP timing solutions

# GPS PPP SAMPLE DATA



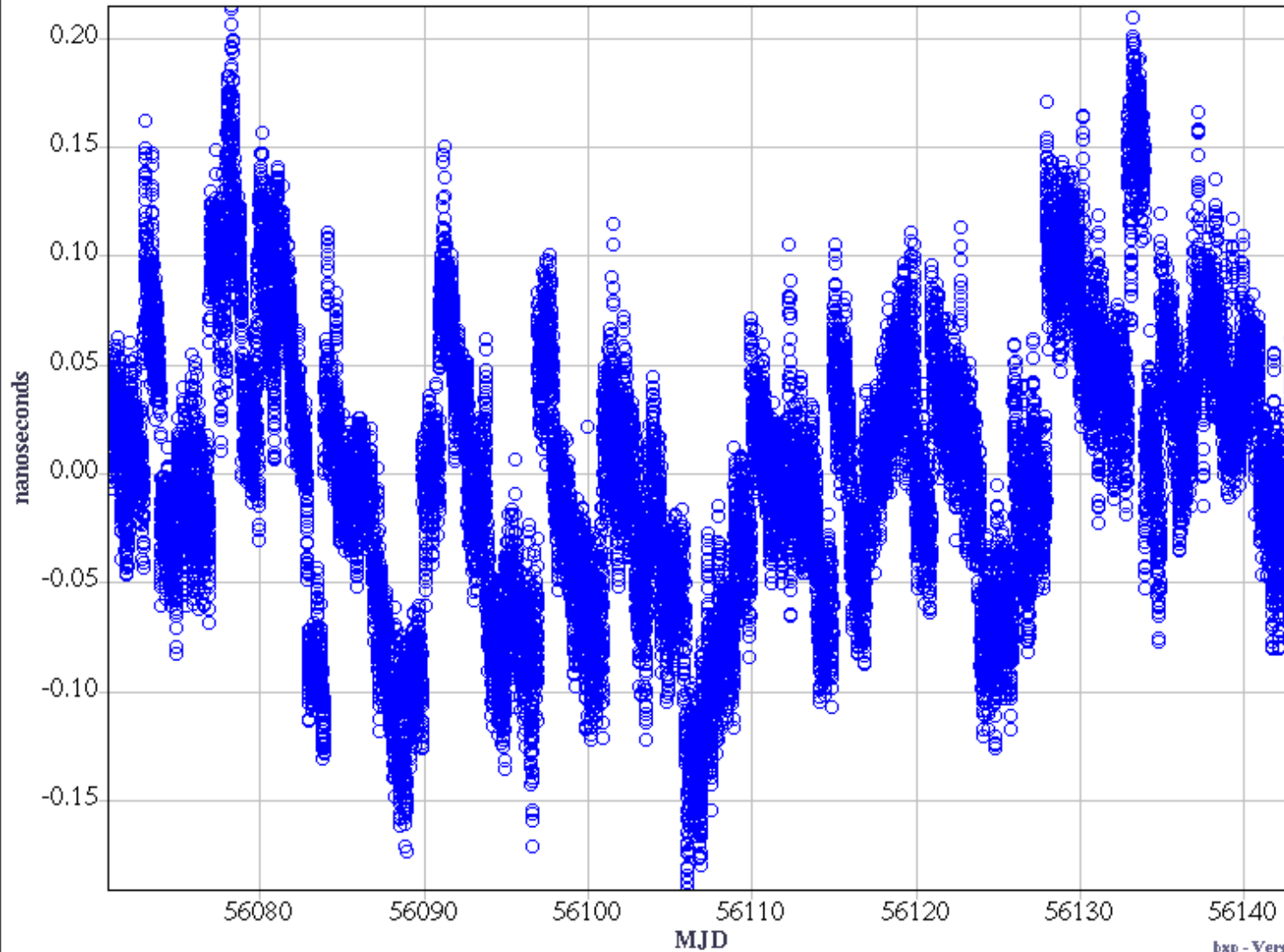
# The Method

- PPP processing produces several output files
- One of the files contains the position calculation at each epoch as well as the clock difference from the paper IGS clock
- Take two of these files and difference the clock differences from IGS, and the IGS cancels and you are left with a time difference between two GPS receivers
- Do this for GPS receivers at different locations, and you can effectively transfer time between remote locations without requiring any base stations!

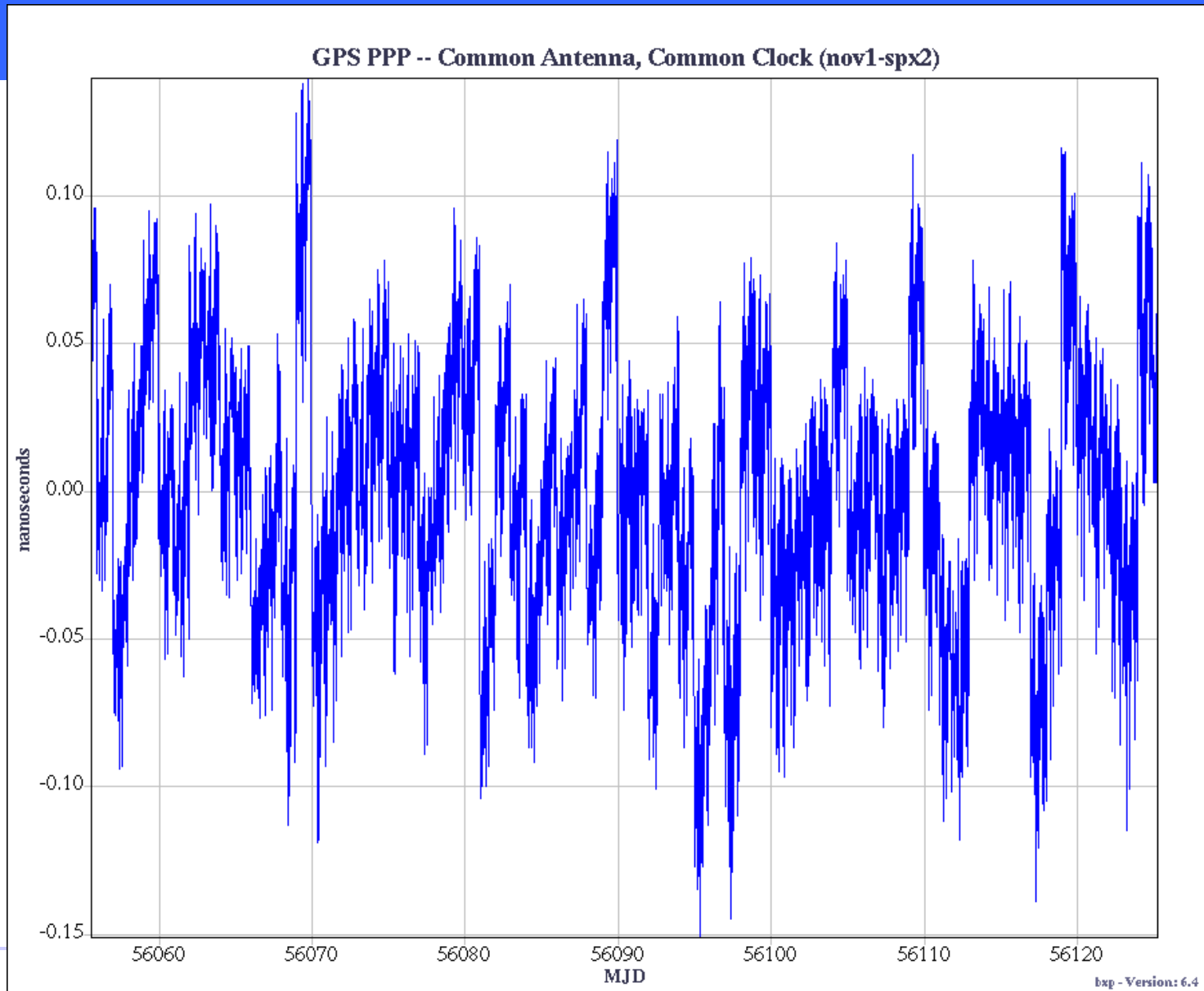


# Common Antenna, Common Clock

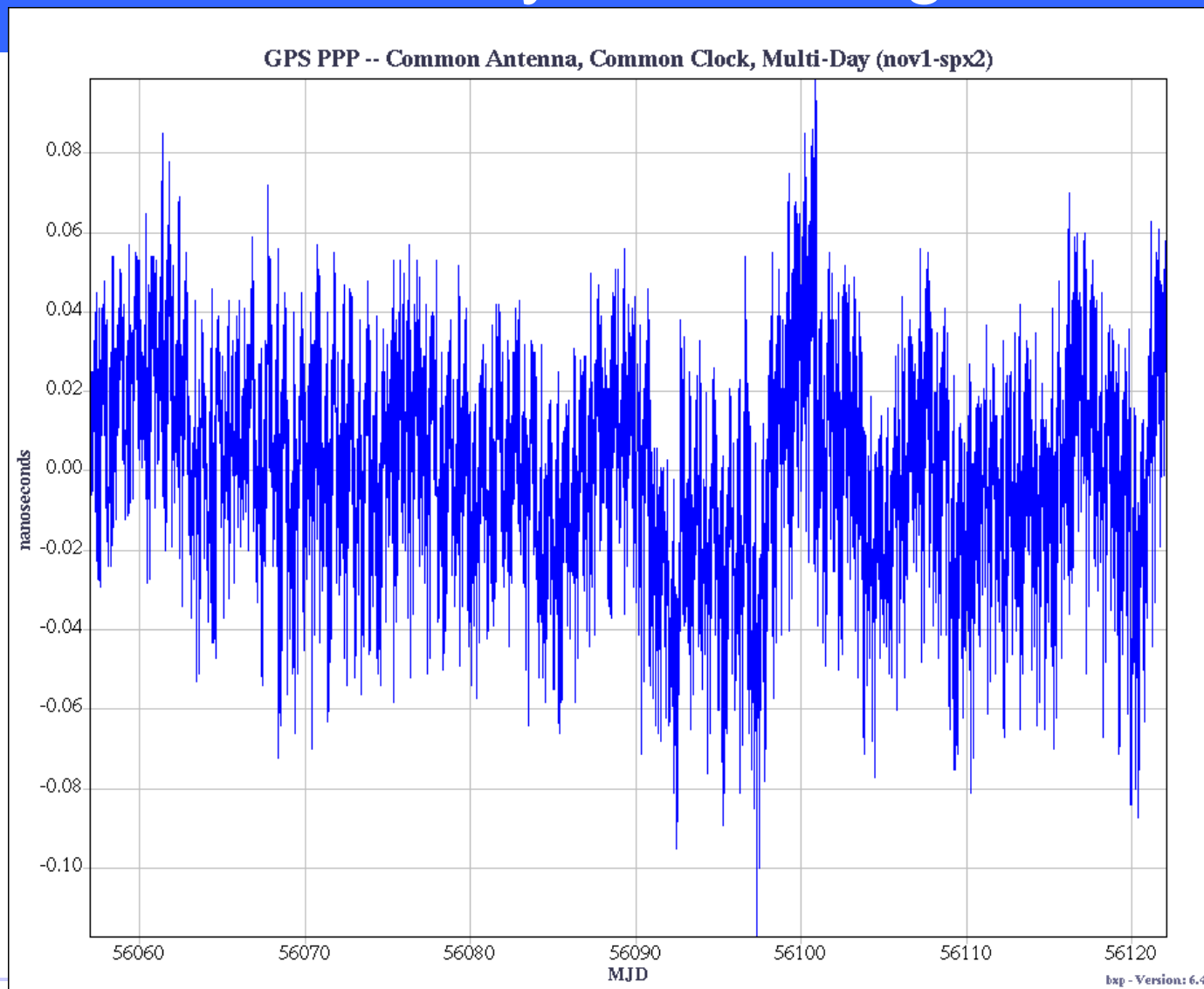
GPS PPP -- Common Antenna, Common Clock (usn3-nov1)



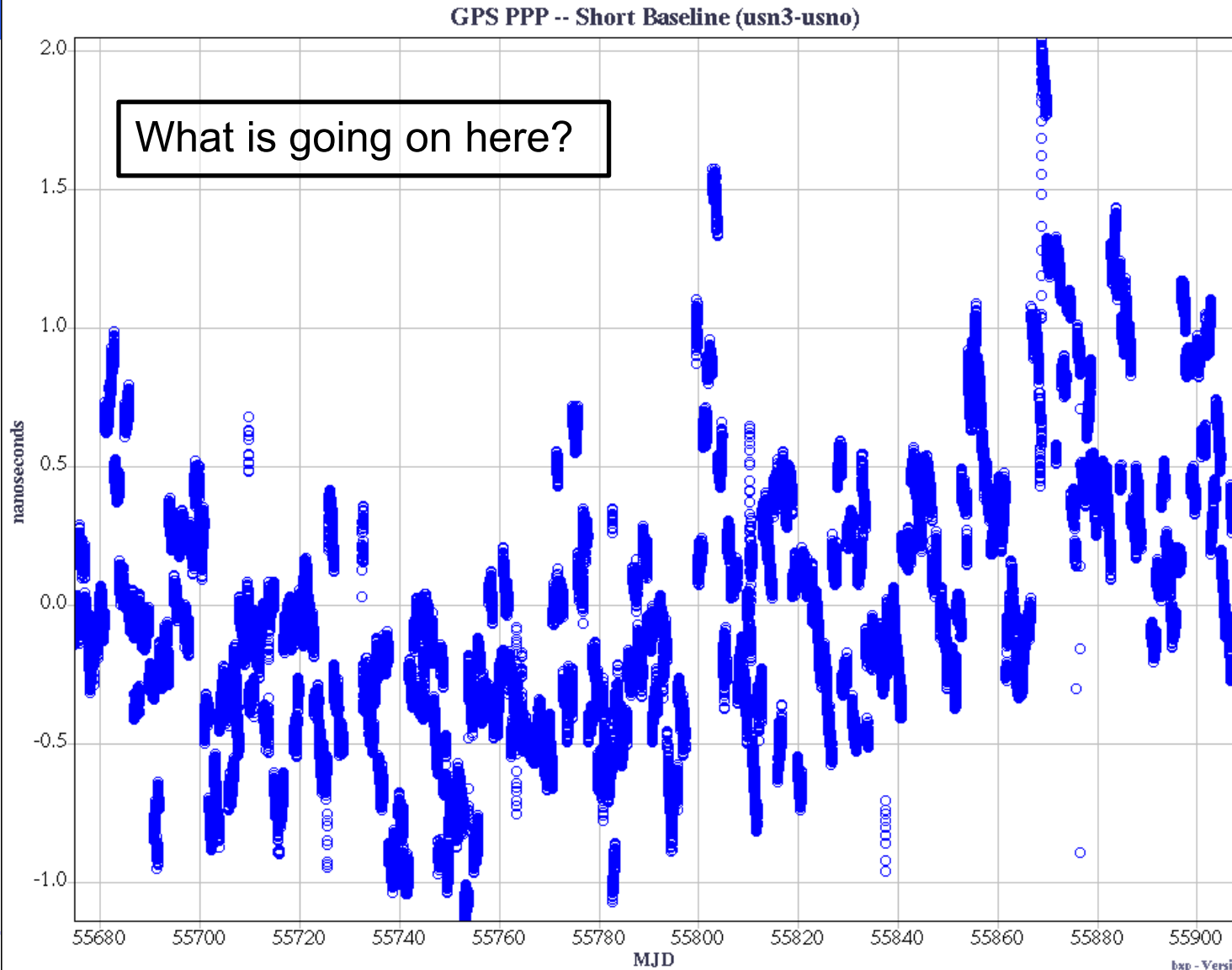
# Common Antenna/Clock, Modern Receivers



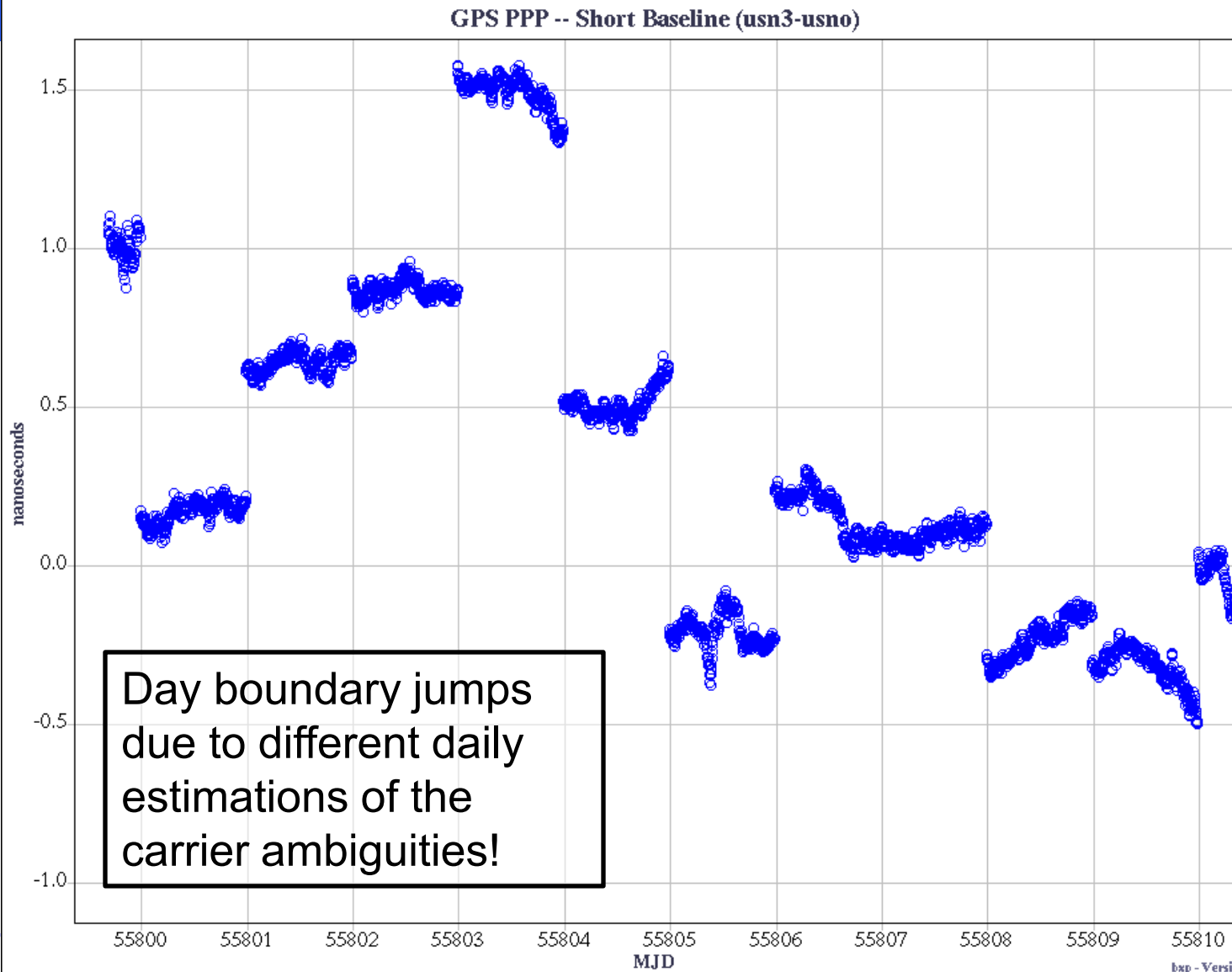
# Common Antenna/Clock, Modern Receivers, Multiday Processing



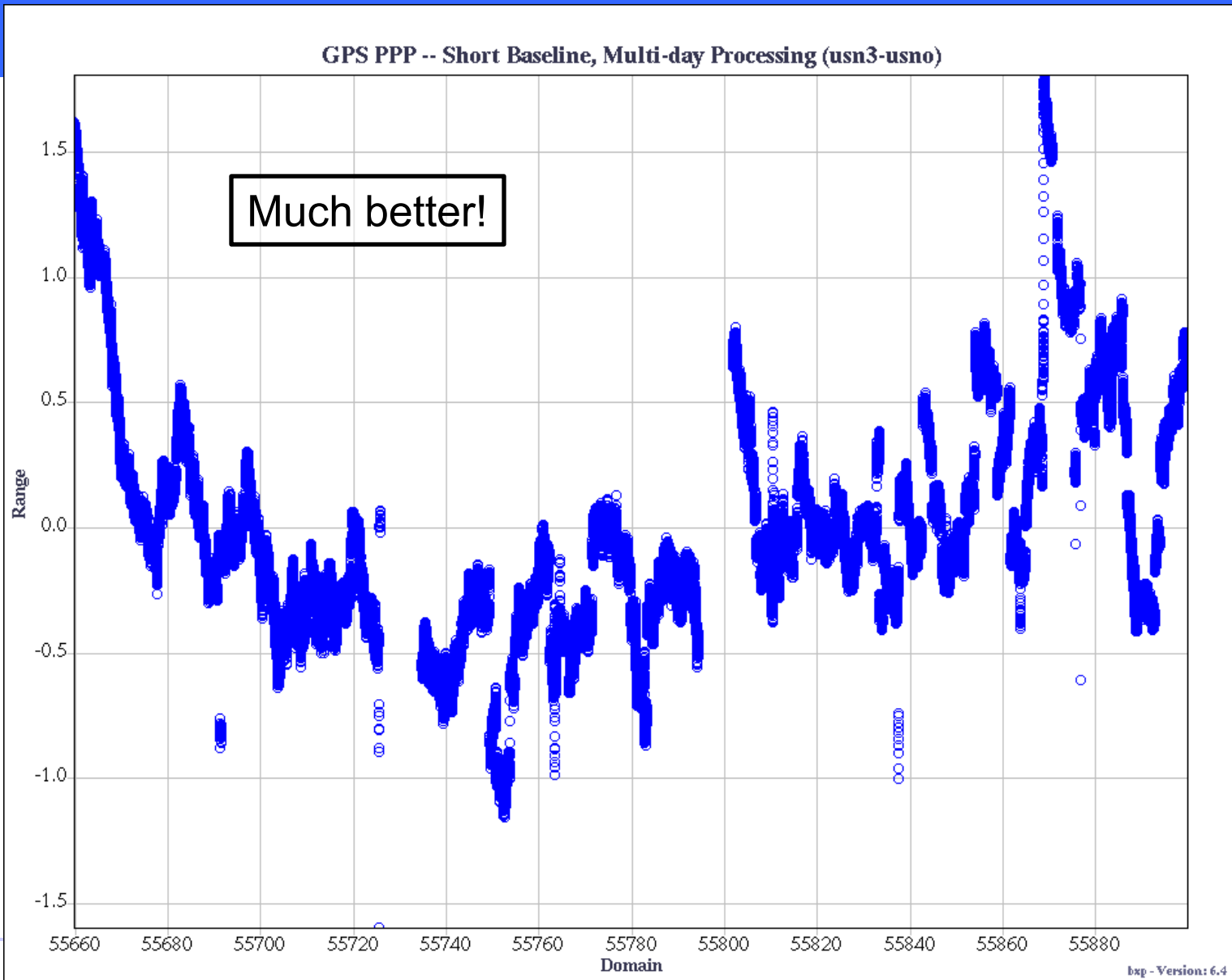
# Short Baseline



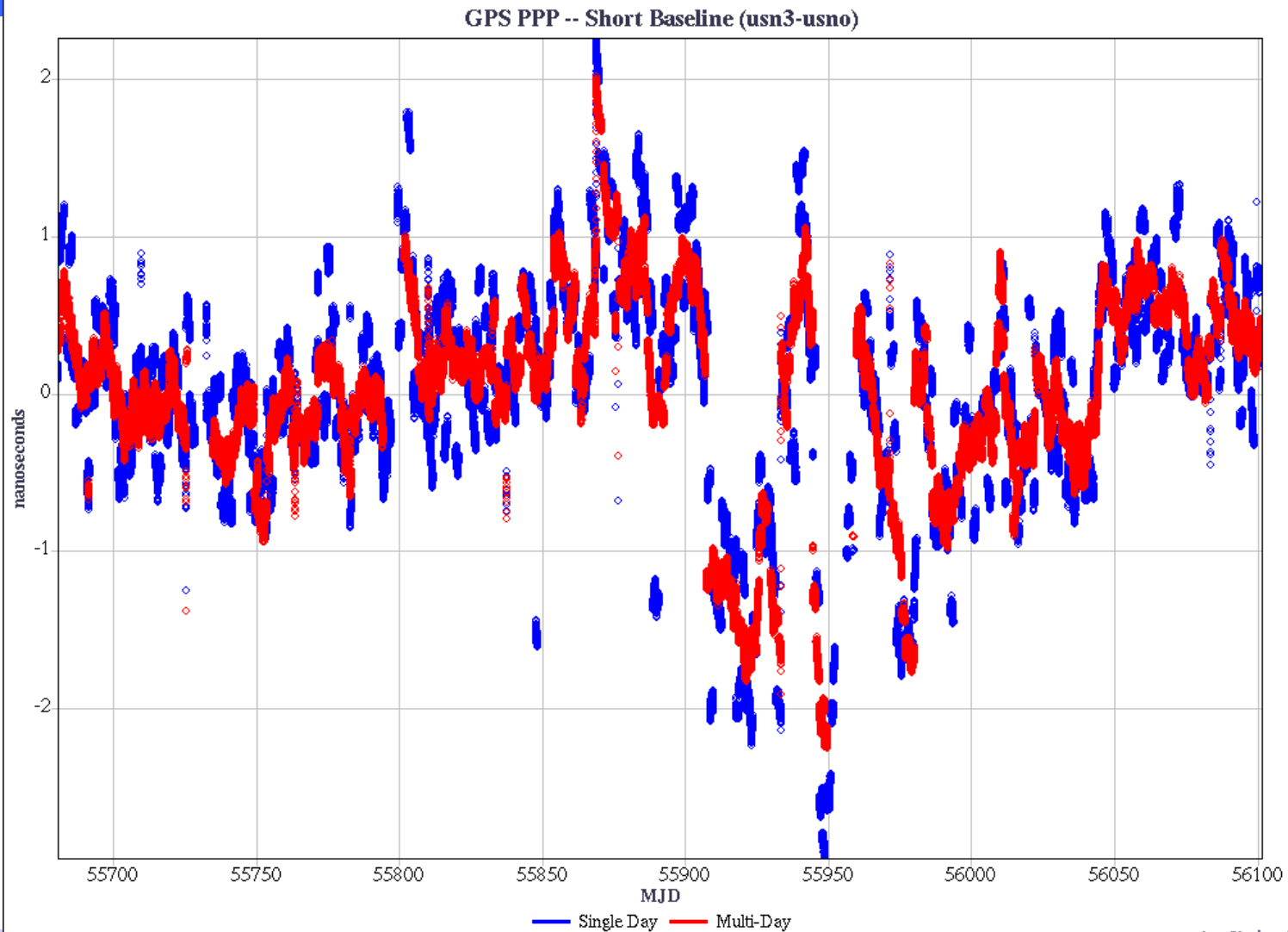
# Short Baseline, Zoomed In



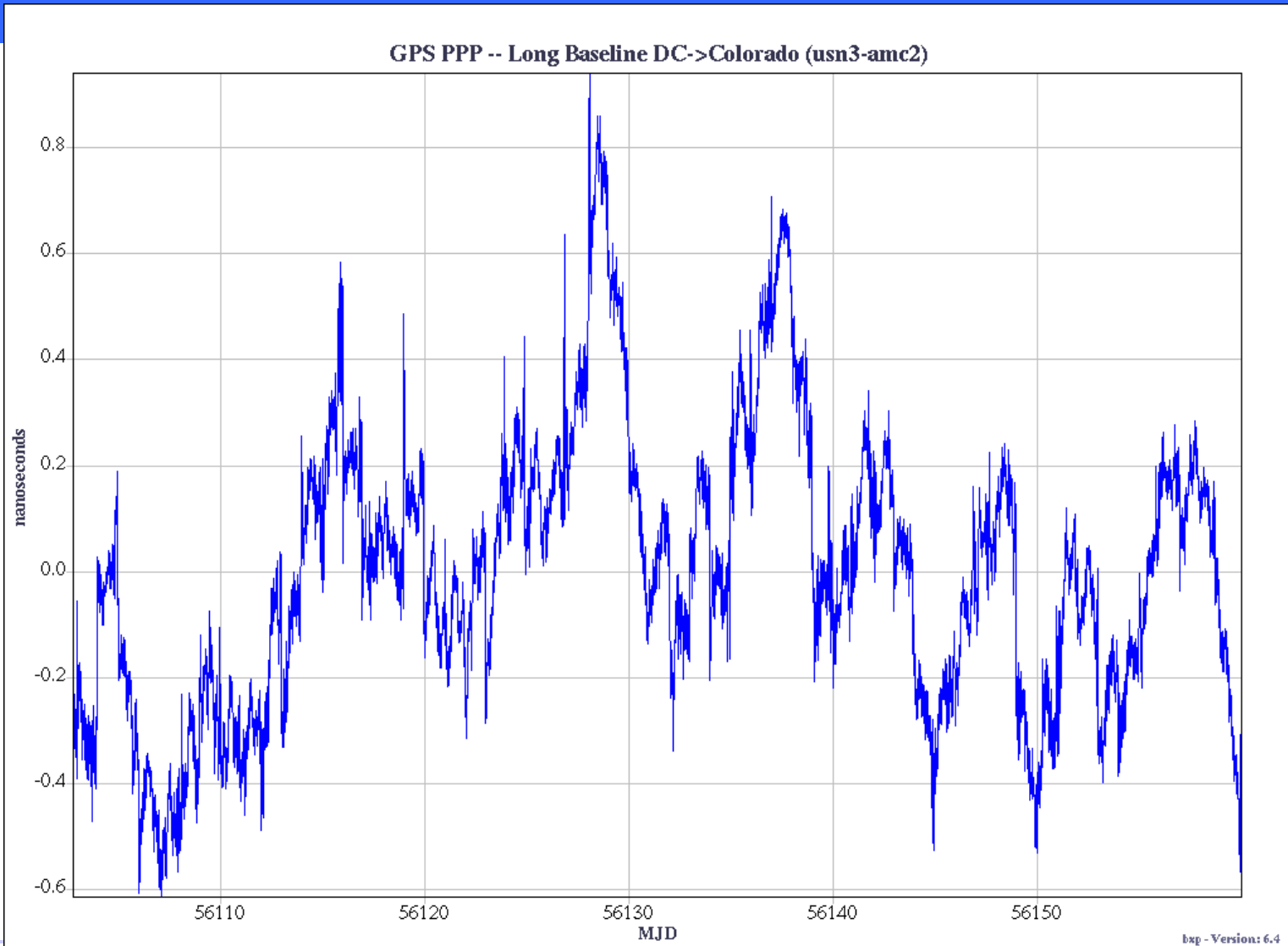
# Short Baseline, Multi-Day Processing



# Short Baseline, Both Methods



# Long Baseline, DC → Colorado



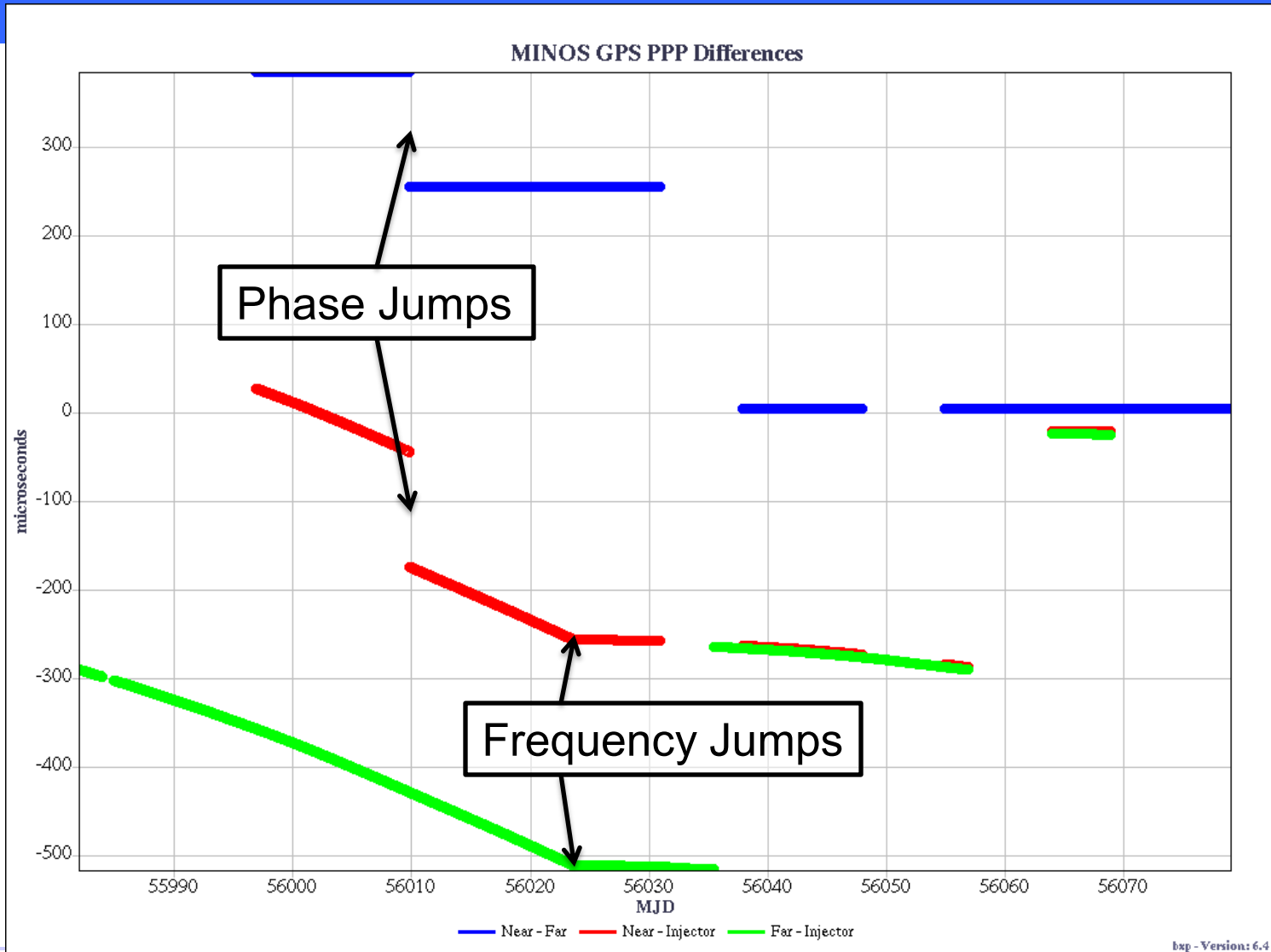
bxp - Version: 6.4



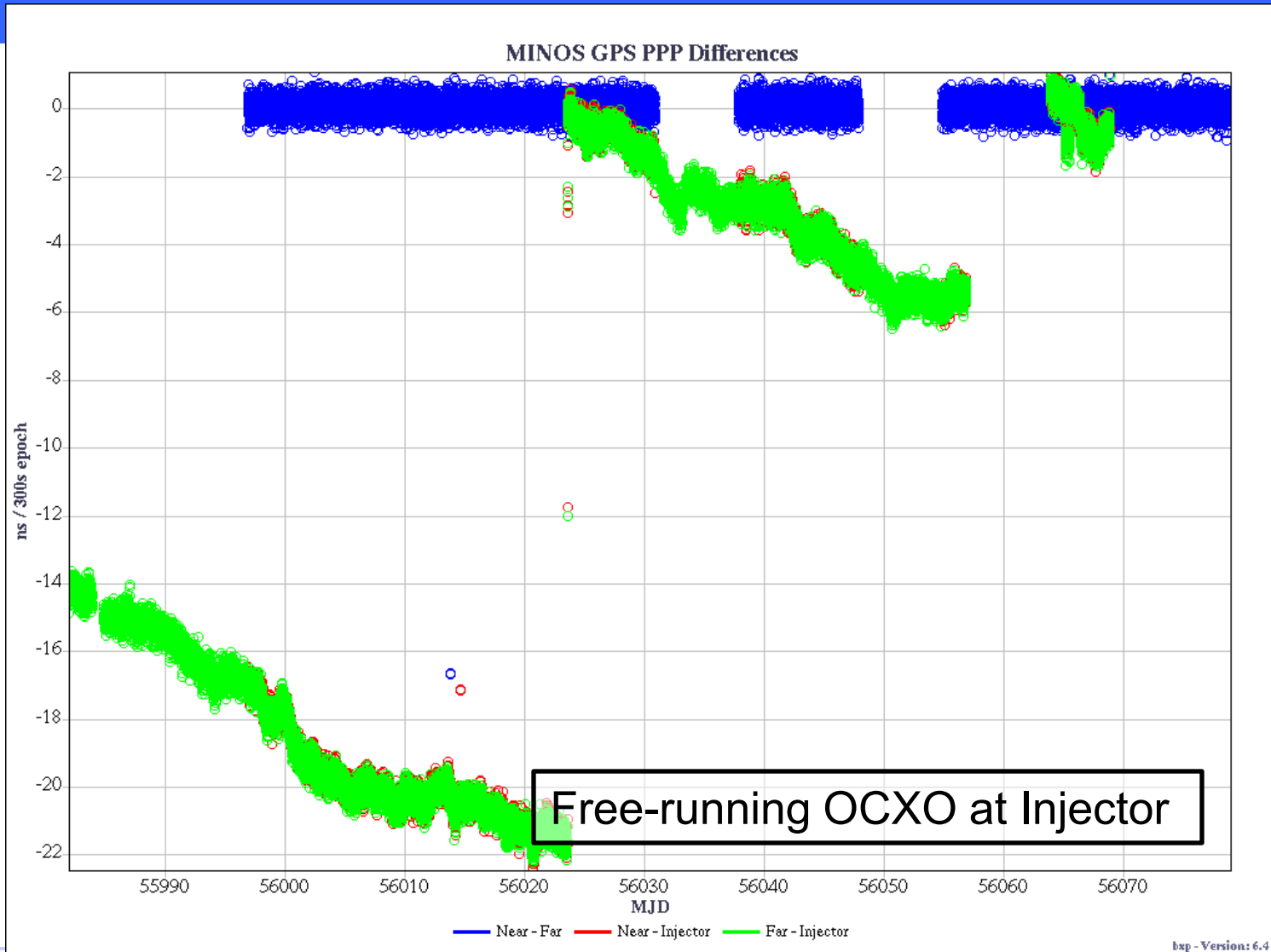
# MINOS GPS PPP DATA



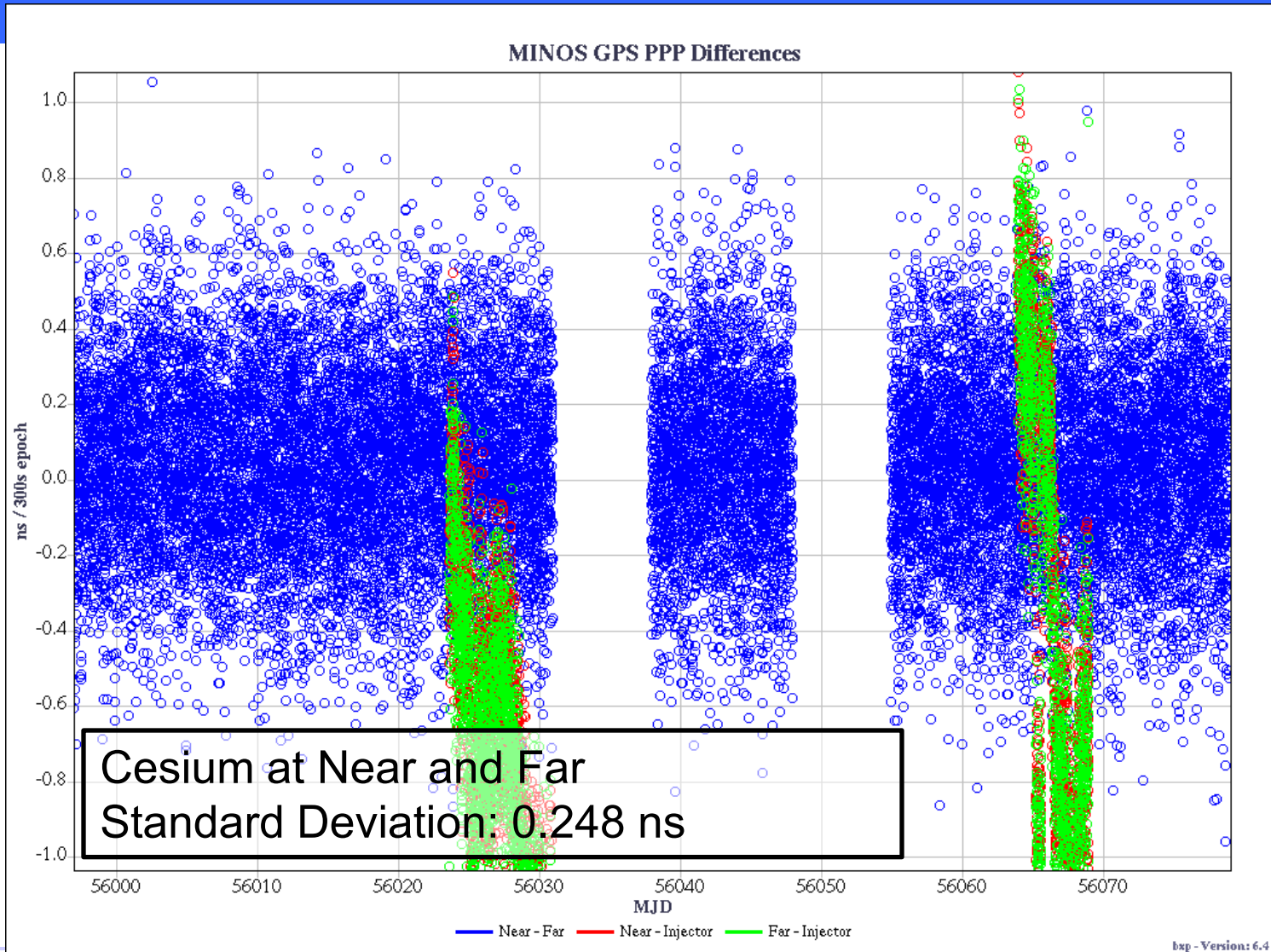
# MINOS PPP Overview



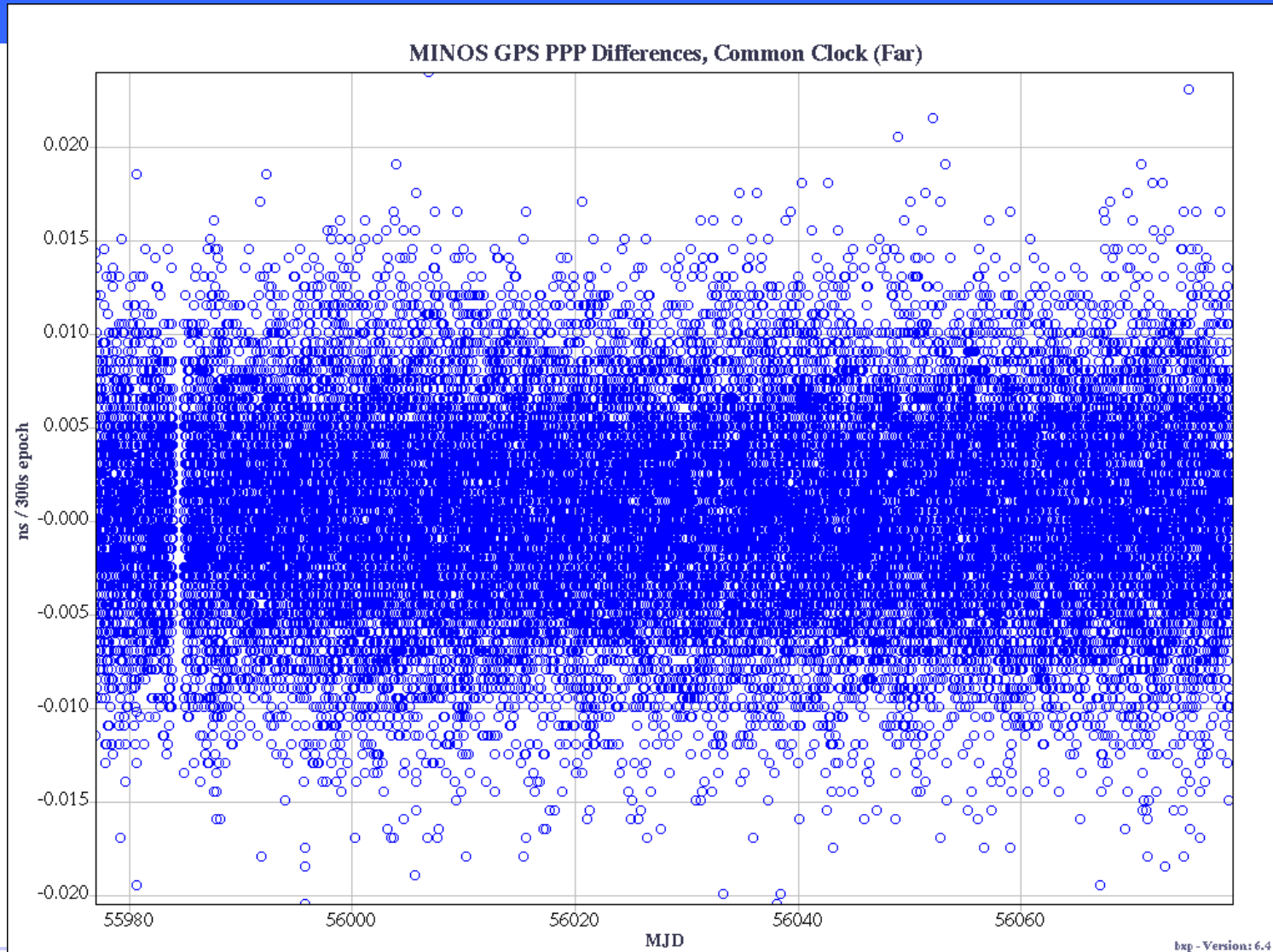
# MINOS PPP Changes Over Time



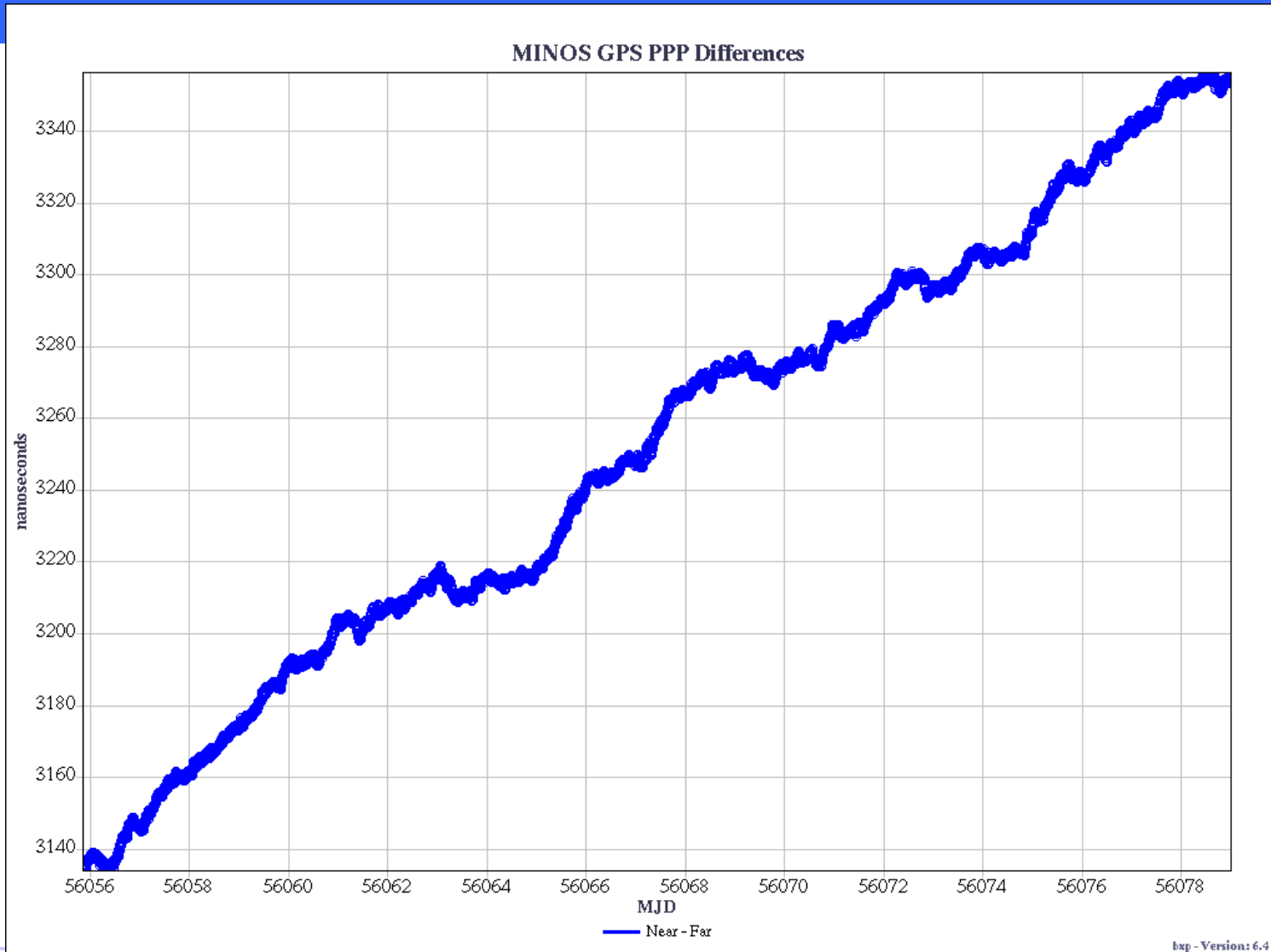
# MINOS PPP Changes Over Time



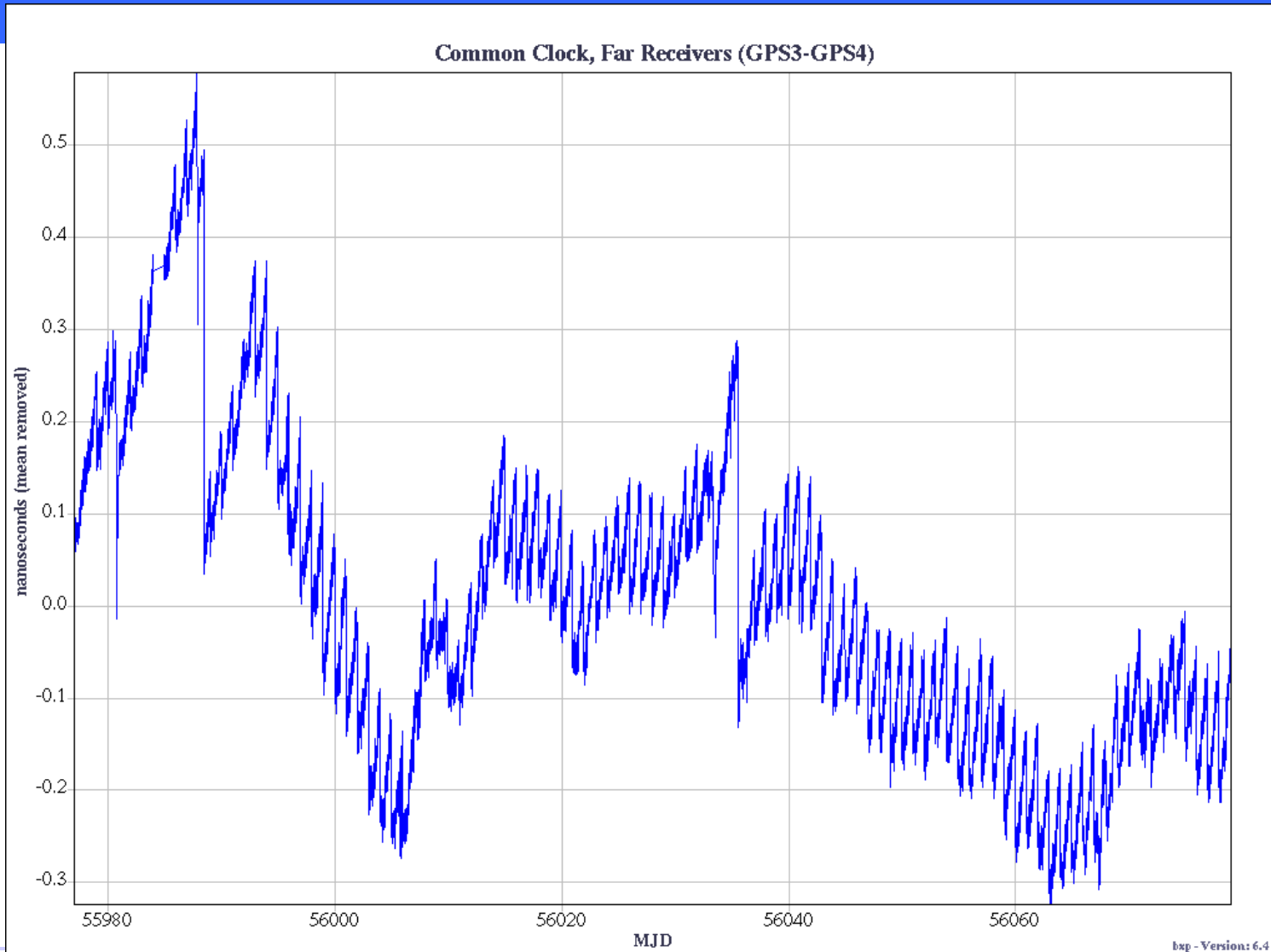
# MINOS PPP Changes Over Time



# MINOS PPP Near-Far



# MINOS PPP Common-Clock



bxp - Version: 6.4



# MINOS PPP Time Transfer

- Use traveling receivers to determine systematic differences between the two sites
- Form a calibration value from these systematic differences
- Determine the time difference of the clocks at each site at any given time
- Can use two Time Transfer methods to verify calibration: GPS PPP and Two-Way Satellite Time Transfer



# MINOS PPP Time Transfer Traveling Receivers

- An entire GPS system consisting of antenna, cables, and receiver
- Everything stays the same between sites except the antenna location and the distribution amplifiers used
- Allows for very precise common-clock comparison to the stationary receivers at each site
- A relative site offset can be determined by comparing the site receivers against the same traveling receiver as it visits each site
- MINOS has two



# GPS PPP Calibration Worksheet

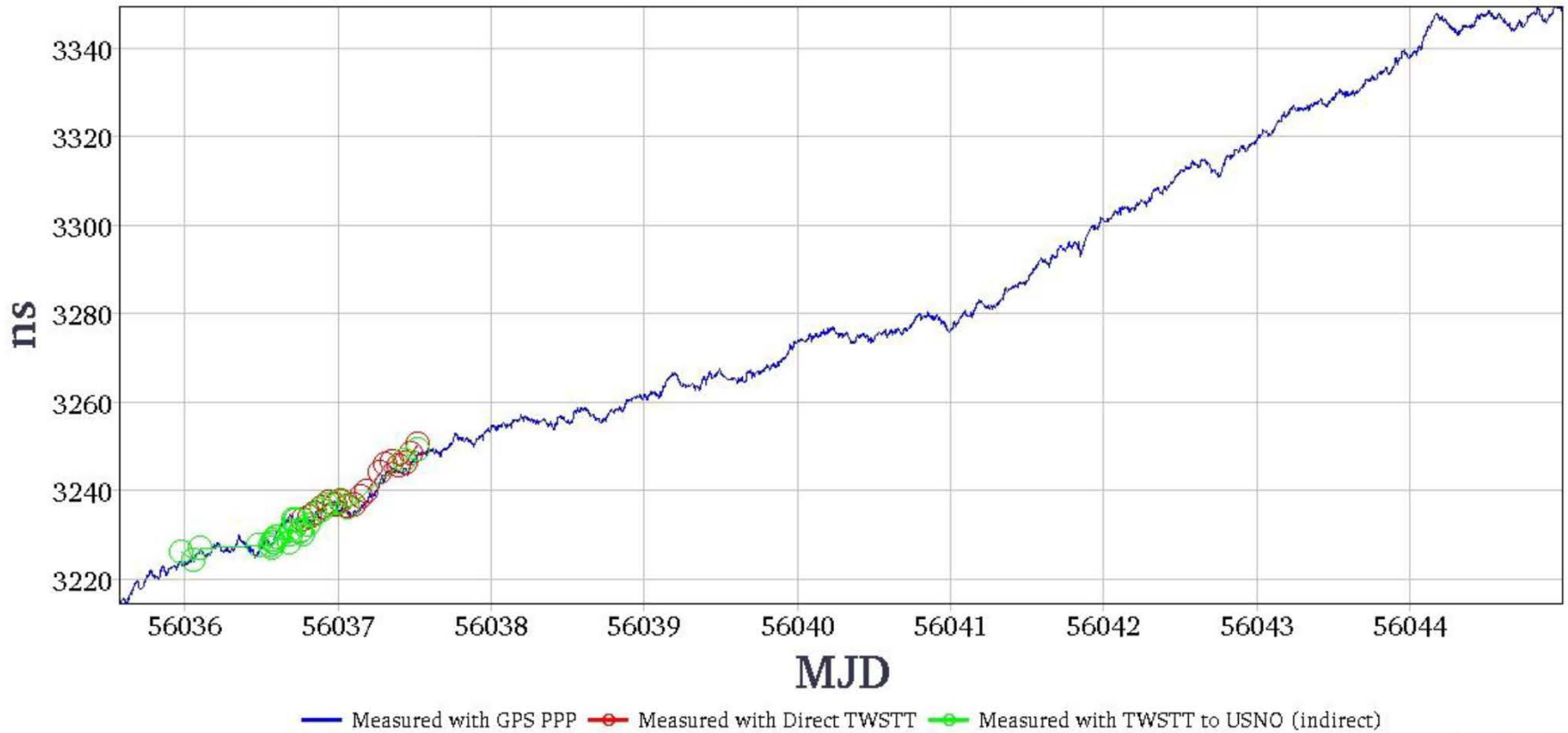
- Apologies for the small text!
- GPS Traveling systems agree to 450 ps!

Minos GPS Time Transfer (PPP)								
Site Name	Character	Role						
Mi60	S	Injector						
Sudan	F	Far Detector (FD)						
FermiLab	N	Near Detector (ND)						
Receiver	GPS1	GPS2	GPS3	GPS4	GPS5	GPS6	GPS7	GPS8
Site	S	N	F	F	Trav	Trav	S	N
			GPS3					
		GPS2 (N)	(F)	GPS5 (F)	GPS5 (N)	GPS6 (F)	GPS6 (N)	
Tick-to-tick		27.8	14.53	14.31	27.42	14.27	27.39	
*Tick-to-tick added to RCVR-IGS datasets								
Avg GPS5-GPS2		36.62						
Avg GPS5-GPS3		-27.83						
Avg GPS6-GPS2		41.48						
Avg GPS6-GPS3		-23.42						
Double Difference GPS2-GPS3 (via GPS5)					Double Difference GPS2-GPS3 (via GPS6)			
-64.45					-64.9			
Average Double Difference: -64.675								
Calibration Value to be summed to GPS2-GPS3 Data:								
64.675								
Final Values:	MJD	Value						
	56036.85	3234.07						



# Calibration Works!

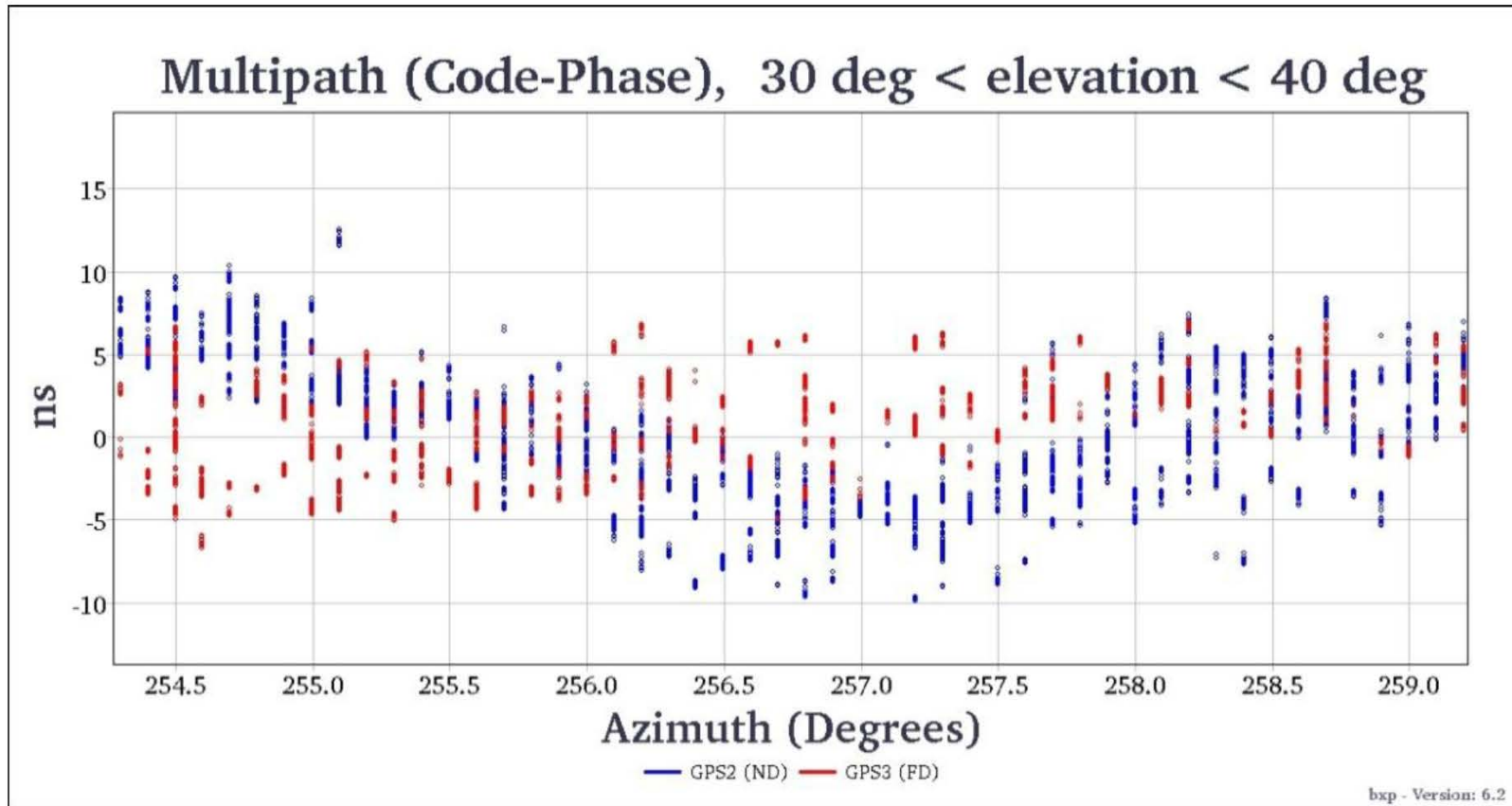
## Fermilab-SoudanMine Cesium Clock Differences



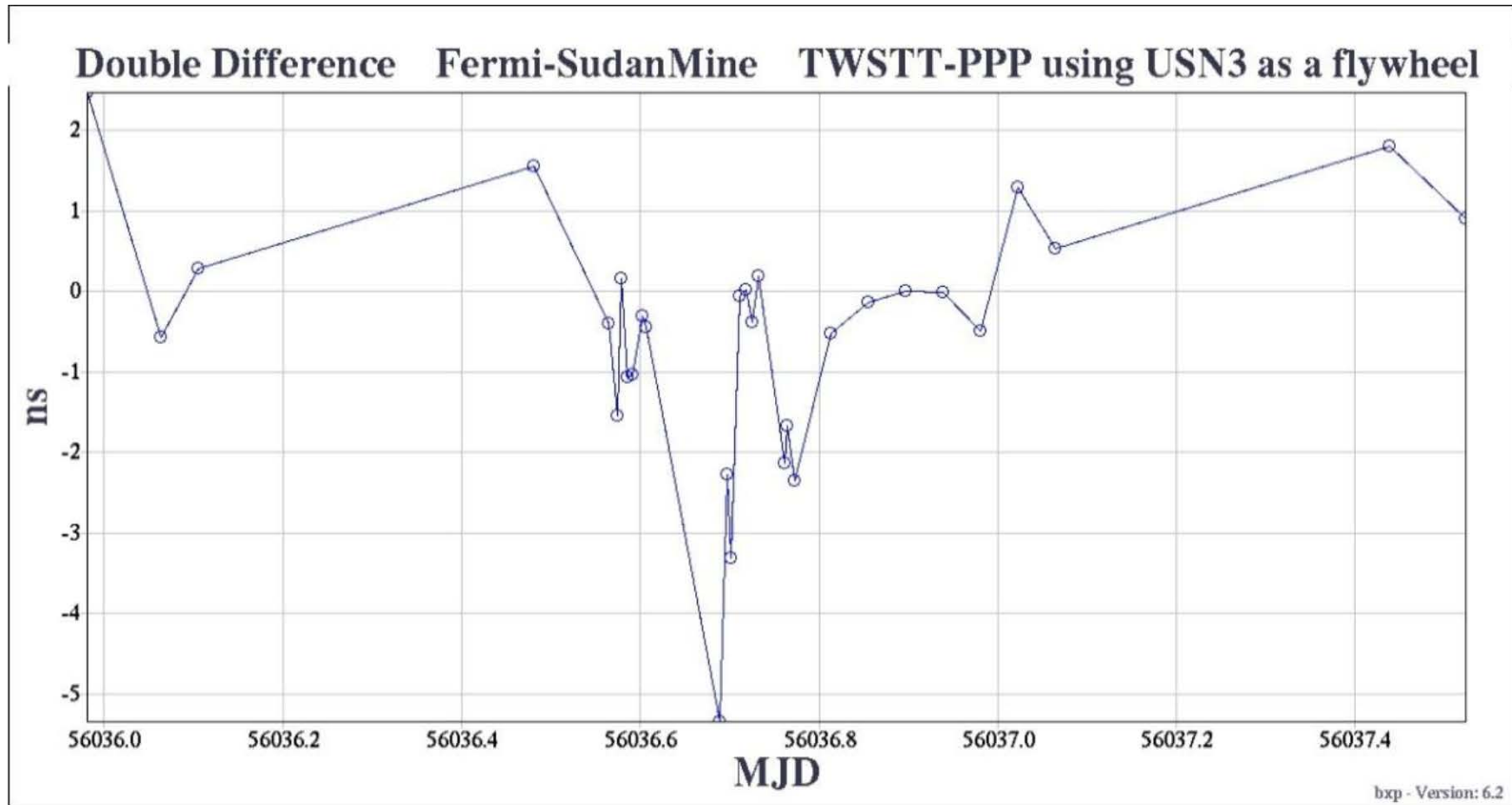
bxp - Version: 6.2



# Calibration Works?



# Calibration Works?



# Conclusions

- Time between Near and Far changes by less than 1 ns for each 300s point in the PPP solution (1-sigma: 0.248 ns)
- A Cs atomic clock has 2-sigma instability around 100 ps at 300 s
- Two separate GPS traveling systems had calibrations only 450 ps apart
- Multi-day PPP solutions minimize day-boundary discontinuities
- Relative timing accuracy better than 1 ns\*
  - \*If the calibration works!



End of Presentation

**THANK YOU!**

